

# AG SHIELD

## **Cross Auger for Gleaner 600 headers OPERATOR'S HANDBOOK AND PARTS MANUAL**

Ag Shield Manufacturing  
Box 9, Benito, Manitoba R0L 0C0  
phone 800-561-0132 or 204-539-2000  
fax 204-539-2130  
e-mail address [sales@agshield.com](mailto:sales@agshield.com)  
Please visit web site at <http://www.agshield.com>

Printed in Canada      - JULY 13, 2006  
Serial no.-

REV 1

-Part No 405374



WARRANTY REGISTRATION-YIELD SHIELD

RETURN TO



**AG SHIELD MANUFACTURING**

**BOX 9, BENITO, MB, R0L 0C0**

PHONE 800-561-0132 or 204-539-2000 FAX 204-539-2130

e-mail sales @agshield.com

**This form must be filled out by the dealer(if applicable) and signed by both the dealer and customer at the time of delivery, and returned to Ag Shield within 10 days to validate warranty.**

Customer \_\_\_\_\_

Dealer \_\_\_\_\_

Address \_\_\_\_\_

Address \_\_\_\_\_

City, \_\_\_\_\_

City, \_\_\_\_\_

Prov. \_\_\_\_\_ Code \_\_\_\_\_

Prov. \_\_\_\_\_ Code \_\_\_\_\_

phone(\_\_\_\_\_) \_\_\_\_\_

phone(\_\_\_\_\_) \_\_\_\_\_

fax \_\_\_\_\_

fax \_\_\_\_\_

Model and size \_\_\_\_\_ Cross Auger

Model and size \_\_\_\_\_ Cross Auger

\_\_\_\_\_ 25 ft \_\_\_\_\_ 30 ft \_\_\_\_\_ 36 ft.

Serial no \_\_\_\_\_

Delivery Date \_\_\_\_\_

Delivery Date \_\_\_\_\_

Used for -  farm  custom pushing

Used for -  farm  custom pushing

**DEALER INSPECTION REPORT**

**SAFETY**

\_\_\_\_\_ Hydraulic connections all sealed

\_\_\_\_\_ All decals installed

\_\_\_\_\_ Reflectors clean

\_\_\_\_\_ Guards and shields installed

\_\_\_\_\_ Tire pressure 15psi for cushion

\_\_\_\_\_ Review operating and safety instructions

\_\_\_\_\_ Retainer pins installed as required

I have thoroughly instructed the customer on the above described equipment, including the content of the Owner's Handbook, equipment care, adjustments, safe operation, and applicable warranty policy.

Date \_\_\_\_\_ Dealer signature \_\_\_\_\_

The equipment was complete with all parts in good working order except as noted below. I have received the owner's handbook, and I have been thoroughly instructed in the use of it. I have been instructed in the care, adjustments, the safe operation of the machine, and the applicable warranty policy.

Date \_\_\_\_\_ Customer signature \_\_\_\_\_

Except \_\_\_\_\_



# 1. TABLE OF CONTENTS

1.	TABLE OF CONTENTS.....	5
2.	INTRODUCTION AND SIGN-OFF FORM .....	6
3.	<b>SAFETY</b> .....	<b>7</b>
3.1.	SAFETY OVERVIEW .....	8
3.2.	GENERAL SAFETY .....	8
3.3.	MAINTENANCE SAFETY .....	9
3.4.	HYDRAULIC SAFETY .....	9
3.5.	SHEAR SAFETY .....	9
3.6.	STORAGE SAFETY.....	9
3.7.	TRANSPORT SAFETY .....	9
3.8.	REFUELING SAFETY.....	10
3.9.	TIRE SAFETY .....	10
3.10.	OPERATING SAFETY .....	10
3.11.	DIVIDER SAFETY .....	10
3.12.	SAFETY DECALS.....	11
4.	<b>SETUP FROM SHIPPING MODE</b> .....	<b>12</b>
5.	<b>OPERATIONS</b> .....	<b>23</b>
5.1.	HOOKING UP THE YIELD SHIELD 3 POINT HITCH.....	ERROR! BOOKMARK NOT DEFINED.
5.2.	HOOK UP TO BI-DIRECTIONAL 256, 276, 9030, TV140.	ERROR! BOOKMARK NOT DEFINED.
5.3.	HOOKING UP THE HYDRAULIC SYSTEMS .....	ERROR! BOOKMARK NOT DEFINED.
5.4.	HOOKUP AND OPERATION AFTER MARKET FRONT 3PH	ERROR! BOOKMARK NOT DEFINED.
5.5.	FIELD OPERATION.....	ERROR! BOOKMARK NOT DEFINED.
5.6.	LUBRICATION.....	ERROR! BOOKMARK NOT DEFINED.
5.7.	TRANSPORTING ON ASM TRAILER .....	ERROR! BOOKMARK NOT DEFINED.
5.8.	END VIEW--HEIGHT ADJUSTMENT AND WORKING POSITION	ERROR! BOOKMARK NOT DEFINED.
6.	<b>SPECIFICATIONS - YIELD SHIELD</b> .....	<b>24</b>
7.	<b>PARTS</b> .....	<b>25</b>
7.1.	YIELD SHIELD MAINFRAME ASSEMBLY .....	ERROR! BOOKMARK NOT DEFINED.
7.2.	401040 L.H. WHEEL DIVIDER ASSEMBLY .....	ERROR! BOOKMARK NOT DEFINED.
7.3.	401032 CENTER DIVIDER SHEAR MOTOR ASSEMBLY	ERROR! BOOKMARK NOT DEFINED.
7.4.	SHEAR MOTOR ASSEMBLY .....	ERROR! BOOKMARK NOT DEFINED.
7.5.	401027 EXTENSION ASSEMBLY- 66” .....	ERROR! BOOKMARK NOT DEFINED.
7.6.	TRAILER /BUNK ASSEMBLY—YIELD SHIELD .....	ERROR! BOOKMARK NOT DEFINED.
7.7.	3 POINT HITCH ASSEMBLIES- YIELD SHIELD .....	ERROR! BOOKMARK NOT DEFINED.
7.7.1.	MANDICO 3PH ASSEMBLY FOR JOHN DEERE/CASE ALLIS CHALMER	Error! Bookmark not defined.
7.7.2.	FRONT 3PH ASSEMBLY FOR HIGH CLEARANCE .....	Error! Bookmark not defined.
7.8.	HYDRAULIC SCHEMATIC- ALL MODELS—YIELD SHIELD	ERROR! BOOKMARK NOT DEFINED.
8.	<b>WARRANTY</b> .....	<b>26</b>



### 3. SAFETY

## SAFETY ALERT SYMBOL

This Safety Alert symbol means:  
**ATTENTION! BECOME ALERT!**  
**YOUR SAFETY IS INVOLVED!**

The Safety Alert symbol identifies important safety messages on the Ag Shield Yield Shield and in the manual. When you see this symbol, be alert to the possibility of personal injury or death. Follow the instructions in the safety message.



### 3 Big Reasons

**Accidents Disable and Kill**  
**Accidents Cost**  
**Accidents Can Be Avoided**

#### SIGNAL WORDS:

Note the use of the signal words **DANGER**, **WARNING** and **CAUTION** with the safety messages. The appropriate signal word for each message has been selected using the following guide-lines:

- DANGER** - An immediate and specific hazard which **WILL** result in severe personal injury or death if the proper precautions are not taken.
- WARNING** - A specific hazard or unsafe practice which **COULD** result in severe personal injury or death if proper precautions are not taken.
- CAUTION** - Unsafe practices which **COULD** result in personal injury if proper practices are not taken, or as a reminder of good safety practices.

### 3.1. SAFETY OVERVIEW

**YOU** are responsible for the **SAFE** operation and maintenance of your Ag Shield Yield Shield. **YOU** must ensure that you and anyone else who is going to operate, maintain or work around the canola pusher be familiar with the operating and maintenance procedures and related **SAFETY** information contained in this manual. This manual will take you step-by-step through your working day and alerts you to all good safety practices that should be adhered to while operating the canola pusher.

Remember, **YOU** are the key to safety. Good safety practices not only protect you but also the people around you. Make these practices a working part of your safety program. Be certain that **EVERYONE** operating this equipment is familiar with the recommended operating and maintenance procedures and follows all the safety precautions. Most accidents can be prevented. Do not risk injury or death by ignoring good safety practices.

- Yield Shield owners must give operating instructions to operators or employees before allowing them to operate the Yield Shield, and at least annually thereafter per OSHA regulation 1928.57.
- The most important safety device on this equipment is a **SAFE** operator. It is the operator's responsibility to read and understand **ALL** Safety and Operating instructions in the manual and to follow these. All accidents can be avoided.
- A person who has not read and understood all operating and safety instructions is not qualified to operate the machine. An untrained operator exposes himself and bystanders to possible serious injury or death.
- Do not modify the equipment in any way. Unauthorized modification may impair the function and/or safety and could affect the life of the equipment.
- Think SAFETY! Work SAFELY!

### 3.2. GENERAL SAFETY

1. Read and understand the Operator's Manual and all safety signs before operating, maintaining, adjusting the Yield Shield.
2. Only trained competent persons shall operate the reconditioner. An untrained operator is not qualified to operate the machine.



3. Have a first-aid kit available for use should the need arise and know how to use it.



4. Have a fire extinguisher available for use should the need arise and know how to use it.



5. Do not allow riders.

6. Wear appropriate protective gear. This list includes but is not limited to:

- A hard hat
- Protective shoes with slip resistant soles
- Protective glasses or goggles
- Heavy gloves
- Hearing protection



7. Stop the engine, place all controls in neutral, set park brake, remove ignition key and wait for all moving parts to stop before servicing, adjusting, repairing or unplugging.
8. Review safety related items with all personnel annually.



### 3.3. MAINTENANCE SAFETY

1. Review the Operators Manual and all safety items before working with, maintaining or operating the Yield Shield.
2. Stop the tractor engine, place all controls in neutral, set park brake, remove ignition key, wait for all moving pads to stop before servicing, adjusting, or repairing.
3. Before applying pressure to a hydraulic system, make sure all components are tight and that steel lines, hoses and couplings are not damaged.
4. Relieve pressure from hydraulic circuit before servicing or disconnecting from tractor.
5. Keep hands, feet, clothing and hair away from all moving and/or rotating parts.
6. Clear the area of bystanders, especially children, when carrying out any maintenance and repairs or making any adjustments.
7. Place stands or blocks under the frame before working beneath the machine.

### 3.4. HYDRAULIC SAFETY

1. Always place all tractor hydraulic controls in neutral before dismounting.
2. Make sure that all components in the hydraulic system are kept in good condition and are clean.
3. Replace any worn, cut, abraded, flattened or crimped hoses and steel lines.
4. Do not attempt any makeshift repairs to the hydraulic lines, fittings or hoses by using tape, clamps or cements. The hydraulic system operates under extremely high-pressure. Such repairs will fail suddenly and create a hazardous and unsafe condition.
5. Wear proper hand and eye protection when searching for a high-pressure hydraulic leak. Use a piece of wood or cardboard as a backstop instead of hands to isolate and identify a leak.
6. If injured by a concentrated high-pressure stream of hydraulic fluid, seek medical attention immediately. Serious infection or toxic reaction can develop from hydraulic fluid piercing the skin surface.

7. Before applying pressure to hydraulic system make sure that all connections are tight and that all hoses and fittings are in good condition.

### 3.5. SHEAR SAFETY

The operator must obey all safety labels.

1. Keep operators and bystanders away from all moving parts.
2. Shut off tractor engine and remove key before coming close to the implement or doing any maintenance
3. Never service or unplug shears while they are running, a single slip and you could be badly hurt or killed.

### 3.6. STORAGE SAFETY

1. Store unit in an area away from human activity.
2. Do not permit children to play on or around the stored Yield Shield.

### 3.7. TRANSPORT SAFETY

1. Read and understand ALL the information in the



Operator's Manual regarding procedures and SAFETY when operating the Yield Shield in the field and/or on the road.

2. Check with local authorities regarding machinery transport on public roads. Obey all applicable laws and regulations.
3. Always travel at a safe speed. Use caution when making corners or meeting traffic.
4. Make sure the SMV (Slow Moving Vehicle) emblem and all the lights and reflectors that are required by the local highway and transport authorities are in place, are clean and can be seen clearly by all overtaking and oncoming traffic. Daybreak and dusk are particularly dangerous and pilot vehicles are recommended.

5. Ensure that the trailer is hitched positively to the towing vehicle. Always use a safety chain between the trailer and the tractor.
6. Keep to the right and yield the right-of-way to allow faster traffic to pass. Drive on the road shoulder, if permitted by law.
7. Always use hazard warning flashers on the Yield Shield when transporting unless prohibited by law.

### 3.8. REFUELING SAFETY

1. Handle fuel with care. It is highly flammable.



2. Do not refuel the machine while smoking or when near open flame or sparks.

3. Stop engine before refueling. Clean up spilled fuel before restarting engine.

### 3.9. TIRE SAFETY

1. Failure to follow proper procedures when mounting a tire on a wheel or rim can produce an explosion, which may result in serious injury or death.
2. Do not attempt to mount a tire unless you have the proper equipment and experience to do the job.
3. Have a qualified tire dealer or repair service perform required tire maintenance.
4. Operate the tires at the pressures, loads, and speeds suggested by the manufacturer.

### 3.10. OPERATING SAFETY

1. Read and understand the Operator's Manual and all safety signs before using.
2. Stop engine place all controls in neutral, set park brake, remove ignition key, wait for all moving parts to stop before servicing, adjusting, repairing or unplugging.
3. Before conditioning a field, be familiar with all potential hazards: trees, rocks, ditches, gullies, etc. Plan your route to avoid hazards. Keep Yield Shield width in mind when maneuvering to avoid obstacles.

4. Keep hands, feet, hair and clothing away from all moving and/or rotating parts.
5. Keep all shields and guards in place when operating.
6. Do not allow riders on the Yield Shield or tractor during operation or transporting.
7. Clear the area of all bystanders, especially children, before starting.
8. Stay away from machine when folding deflectors. Keep others away.
9. Before applying pressure to the hydraulic system, make sure all components are tight and that steel lines, hoses and couplings are not damaged.
10. Review safety instructions annually

### 3.11. CROSS AUGER SAFETY

The cross auger has sufficient power to sever limbs and cause serious to fatal injury. Always stop the cross auger before dismounting. Always be certain that no one is in front of combine header Shield before engaging the auger drive.

When greasing the auger, do so with the combine motor shut off and the park brake securely set.

Never attempt to help the crop move along the canvases with a wrench or other item that might get into the auger and draw the wrench holder into the auger.

### 3.12. SAFETY DECALS

Become familiar with these decals and the hazards they are marking.



part #113522

part #113524



part # 113552

## 4. Setup from Shipping Mode

Operator's handbook for Ag Shield Cross auger to fit on to a 36 ft Gleaner 600 header

Figure 1 installed unit.....	<b>Error! Bookmark not defined.</b>
Figure 2 rotation to Weld onto the rear round tube.....	13
Figure 3 hydraulic flow control mount.....	17
Figure 4 Spacing to weld on the mounts.....	18
Figure 5 center mounts with out cover.....	19
Figure 6 RH end front view before plastic deflector.....	20
Figure 7 Left hand end mount.....	21
Figure 8 hydraulic hook up to reel circuit.....	<b>Error! Bookmark not defined.</b>

### Installation sequence

1. Mark out the weld on mounts as per the diagram below, and tack in place.
2. With the bearing flanges on the end, lift the second auger into position. Bolt loosely into place to check that auger will fit compared to the back edge of header.
3. mark the location of the hydraulic flow control mount, tack in place
4. final weld the 4 mounts, and the hydraulic mount, and paint black
5. install the rh auger,
6. install the hydraulic motor and mounts
7. Install left hand auger bearing
8. Install hydraulic hoses as per figure below to tie into canvas circuit, for canola pushing the reel speed circuit has been used,
9. Install the plastic shield as shown on the RH in front of auger.
10. Test direction of rotation to be down on the front of the auger, and set speed of the reel, and use the flow control supplied to set the auger speed to be 5% or slightly greater than the canvases

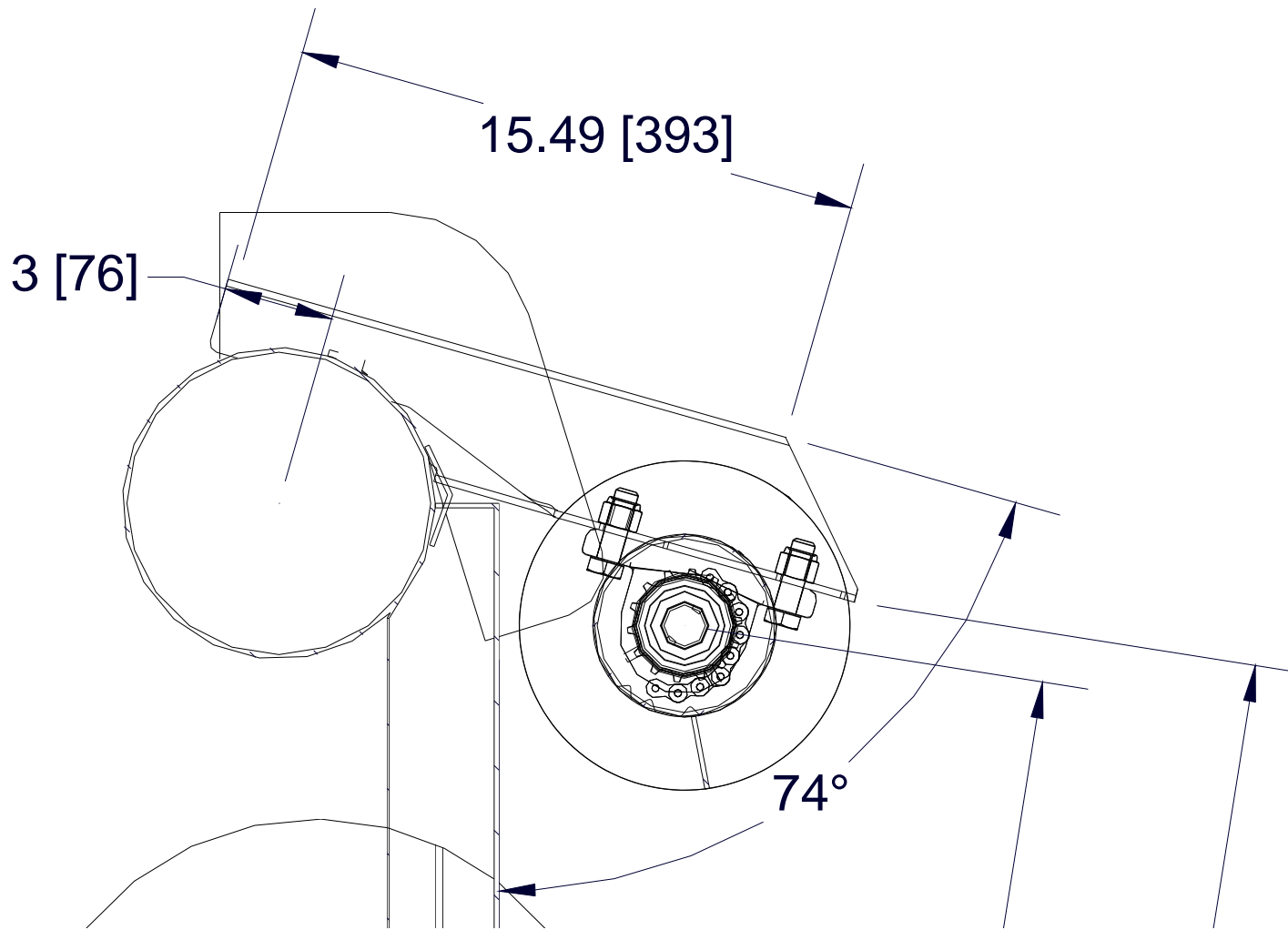
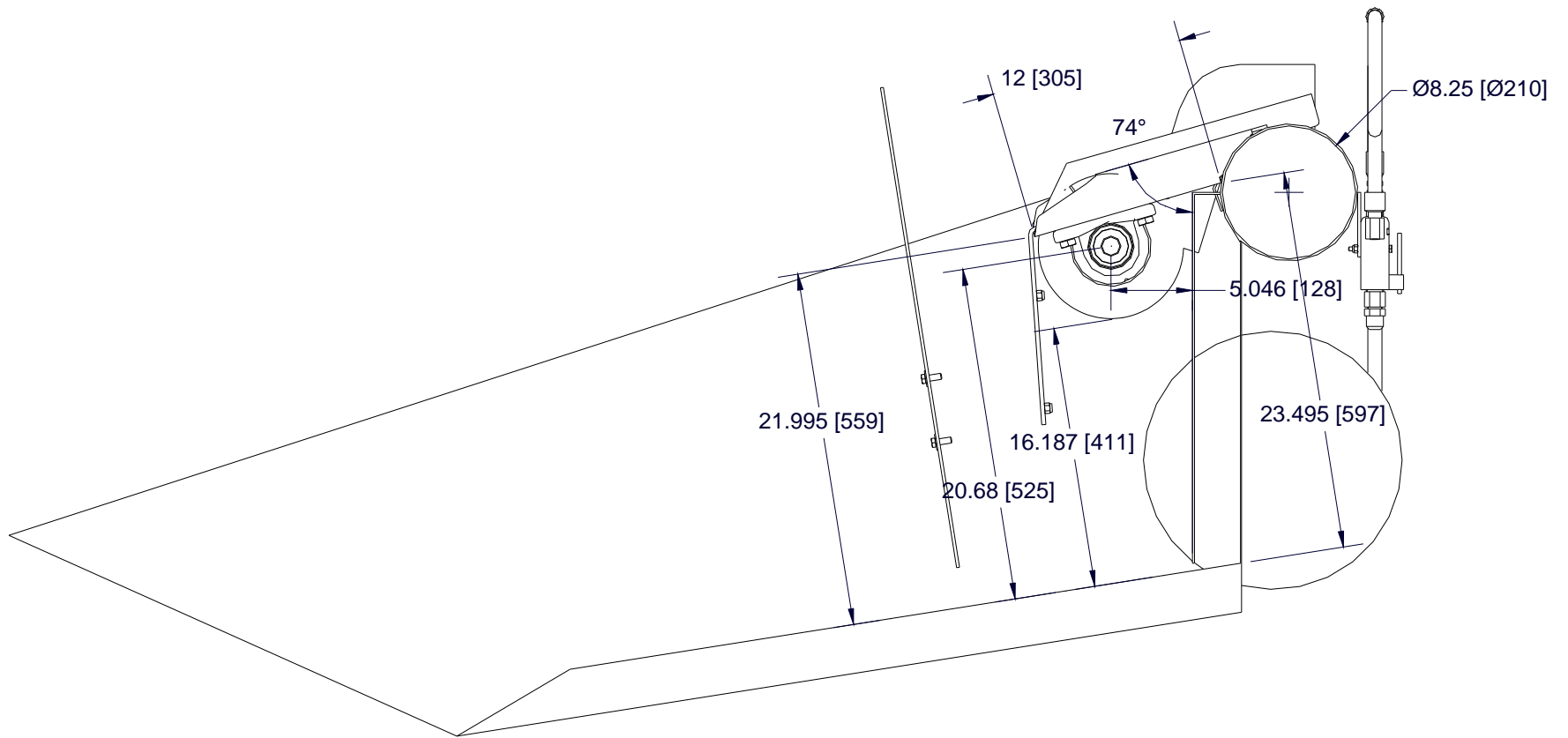


FIGURE 1 ROTATION TO WELD ONTO THE REAR ROUND TUBE, RIGHT END VIEW OF CENTER BEARING MOUNTS

Dimensions given inches/millimeters for the 405367 longer lower mounting bracket for the cross auger on some Gleaner 600 headers



dimensions are inch / millimeter

3.07 / 78 drop compared  
to level on mount

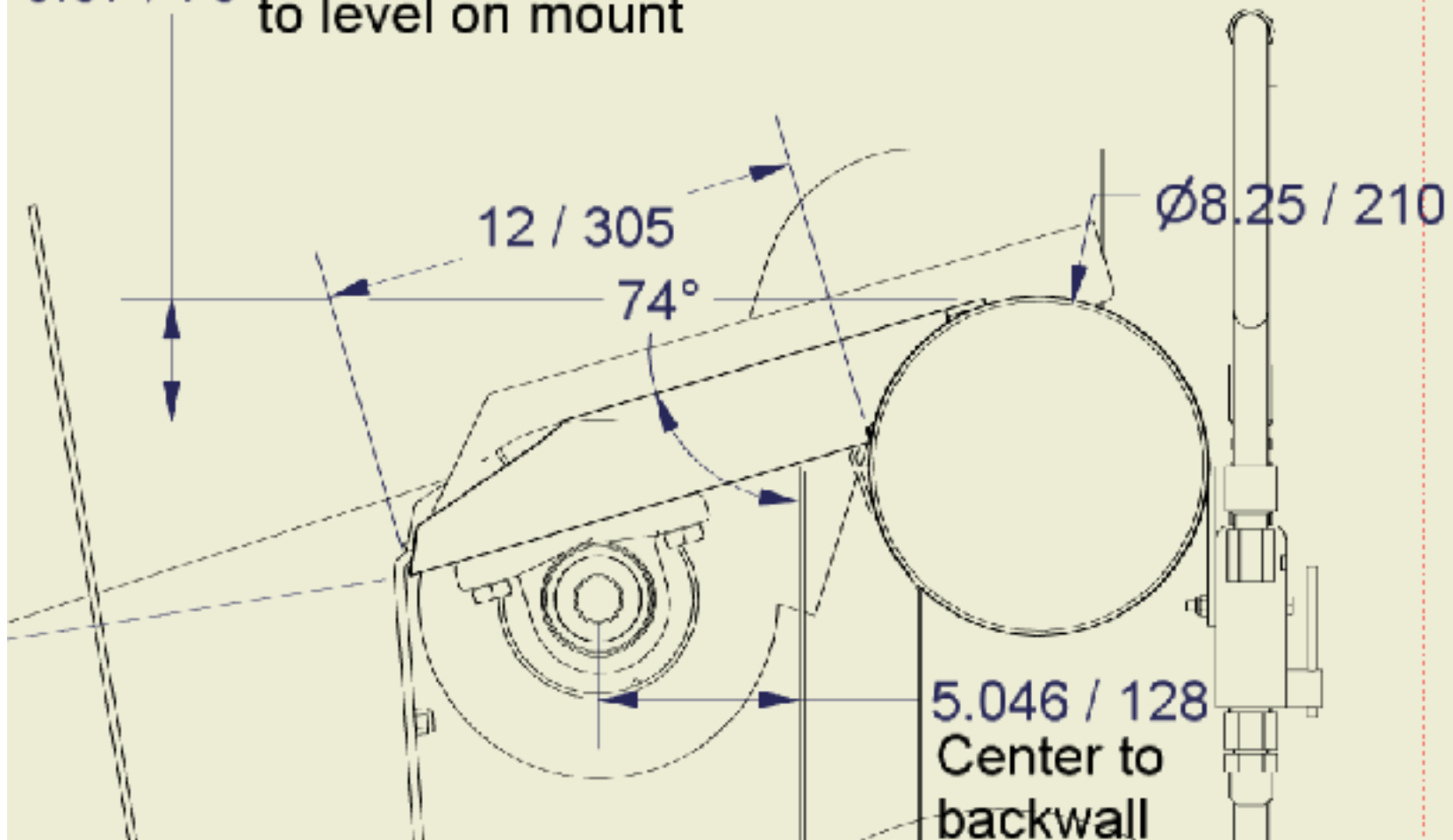




FIGURE 2 HYDRAULIC FLOW CONTROL MOUNT

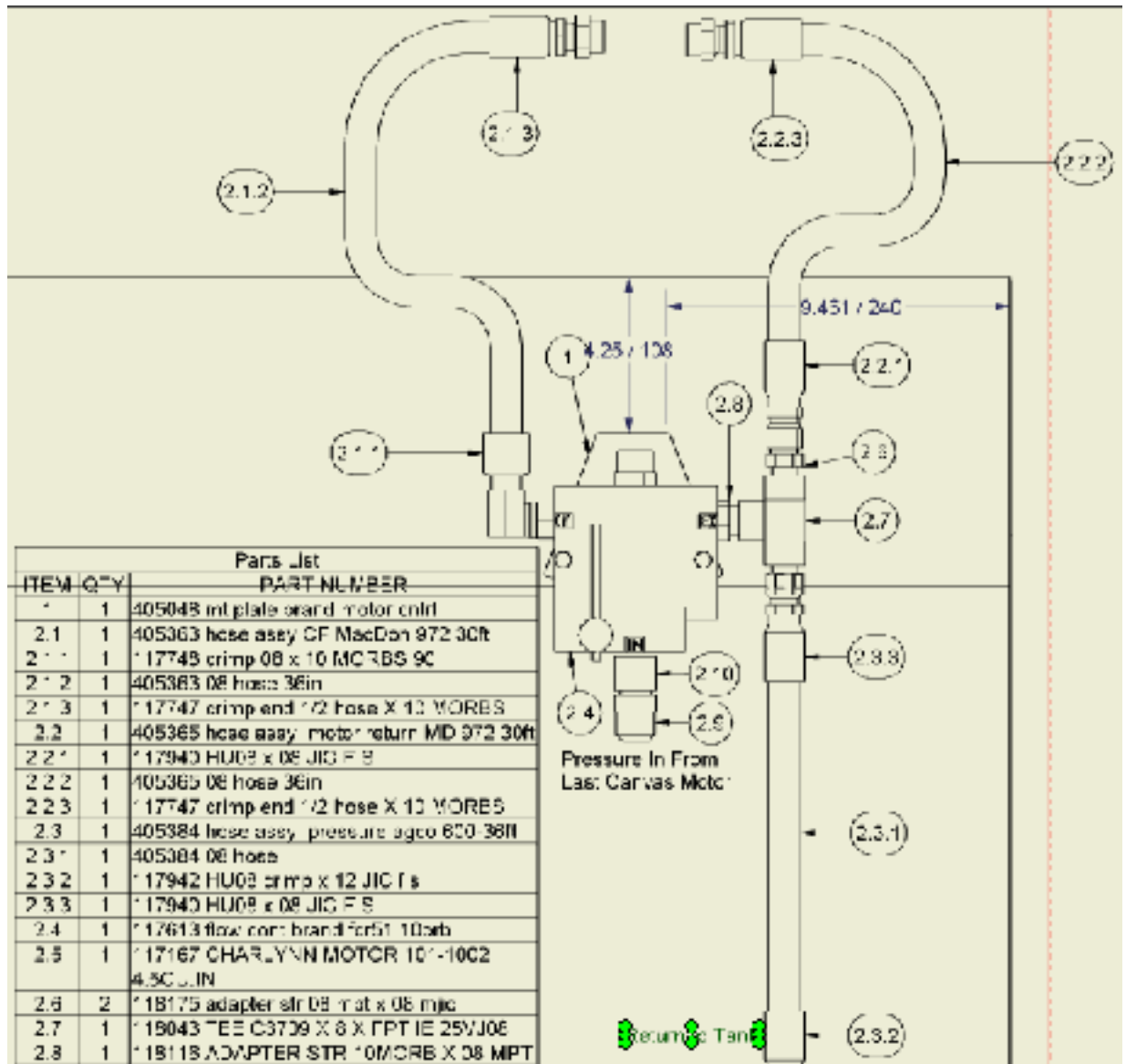
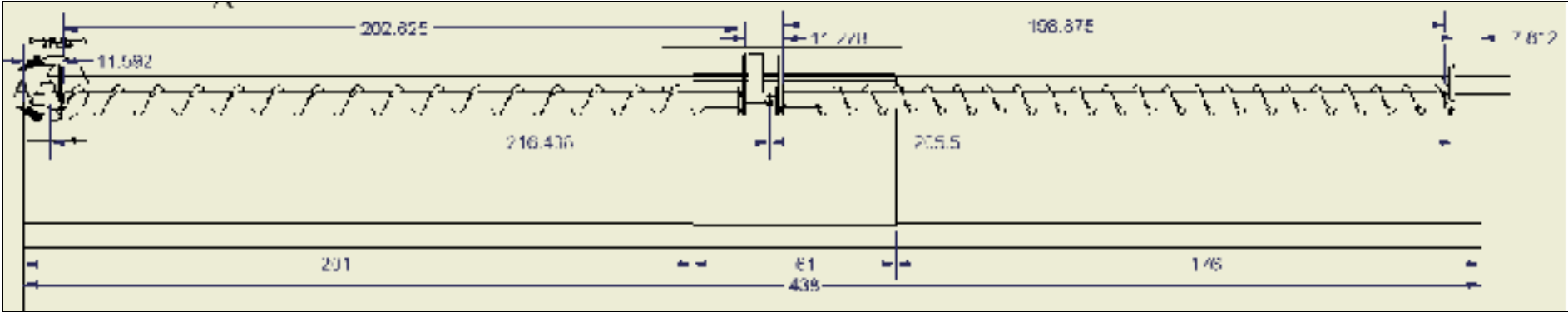


FIGURE 3 SPACING TO WELD ON THE MOUNTS



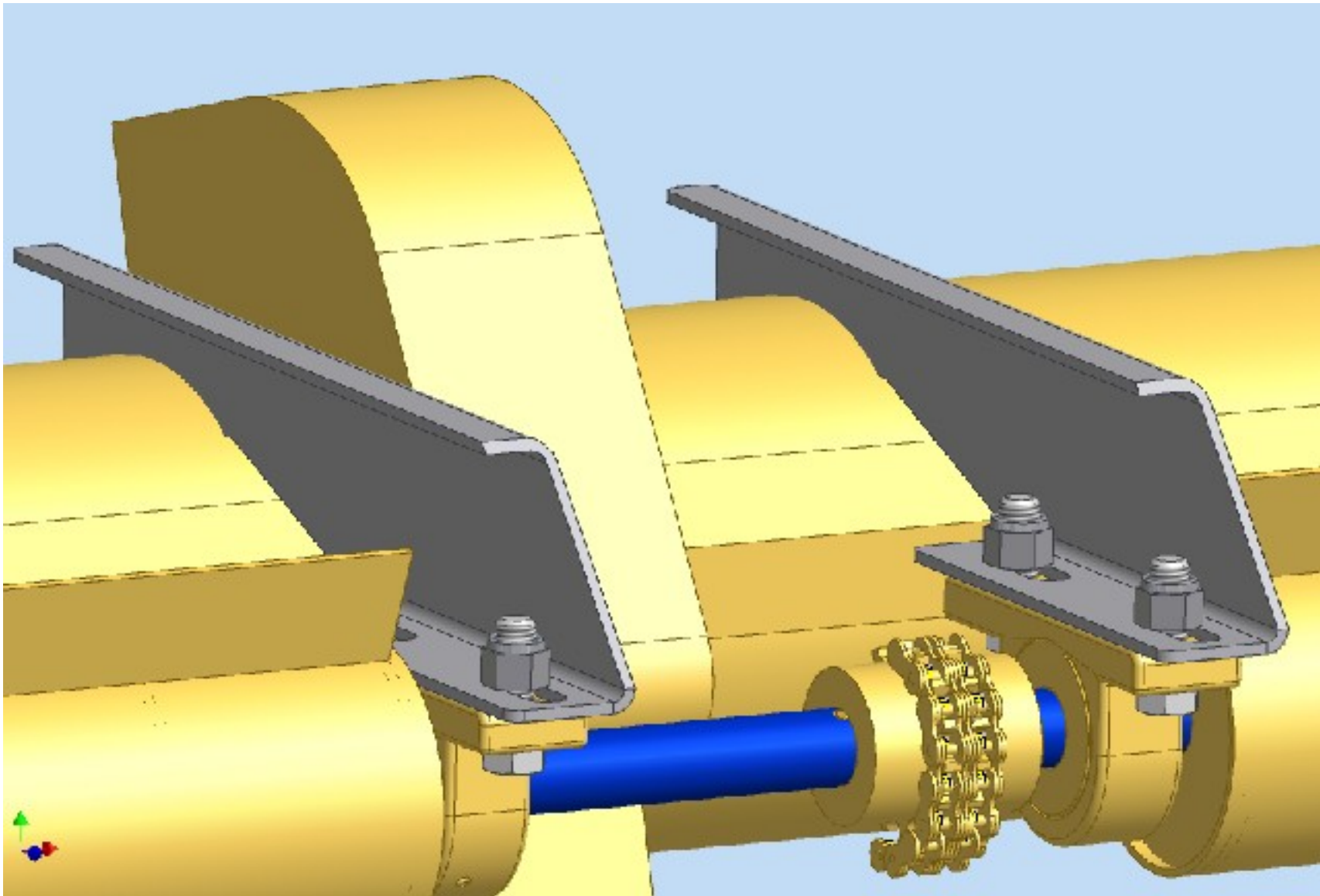


FIGURE 4 CENTER MOUNTS

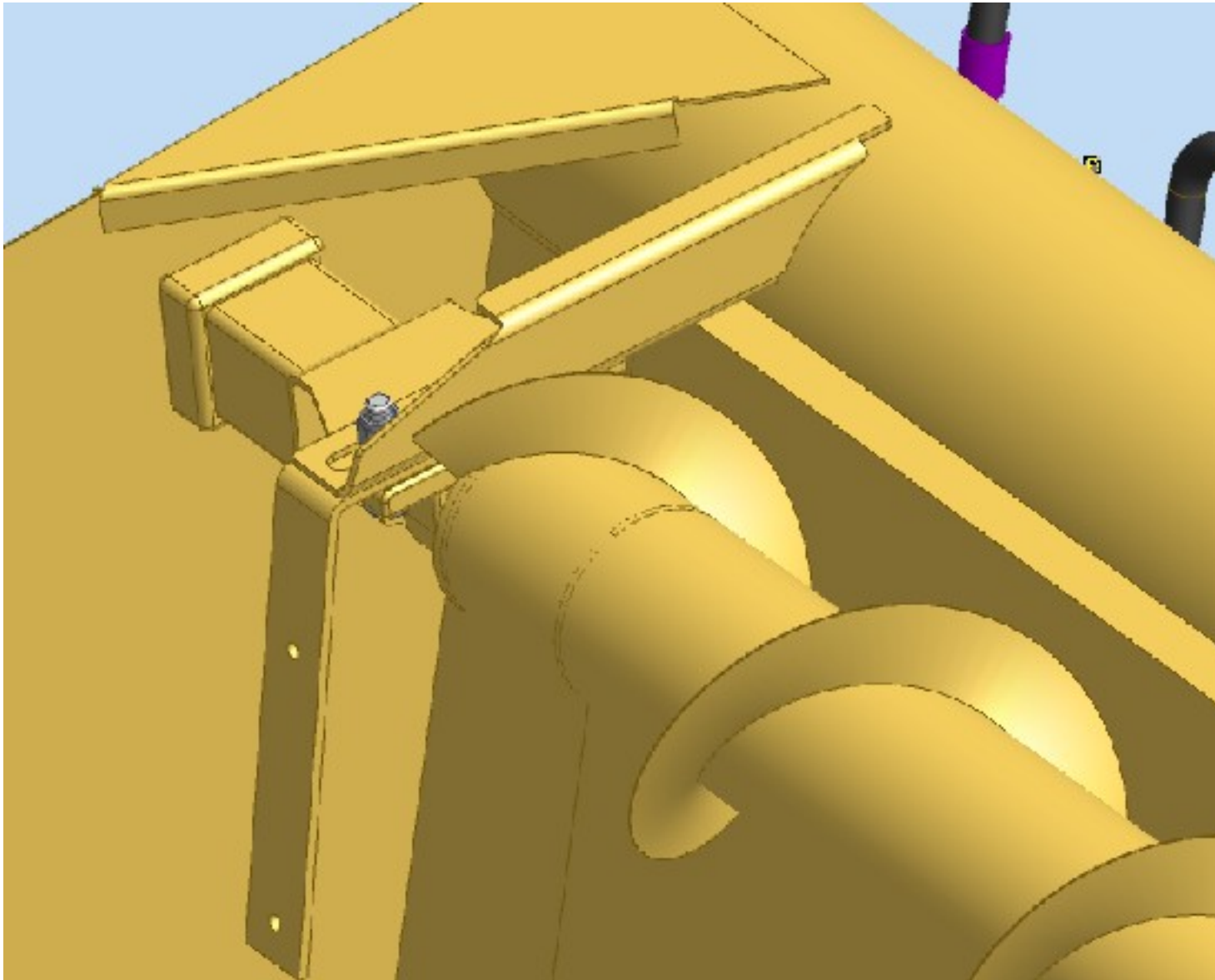


FIGURE 5 RH END FRONT VIEW BEFORE PLASTIC DEFLECTOR

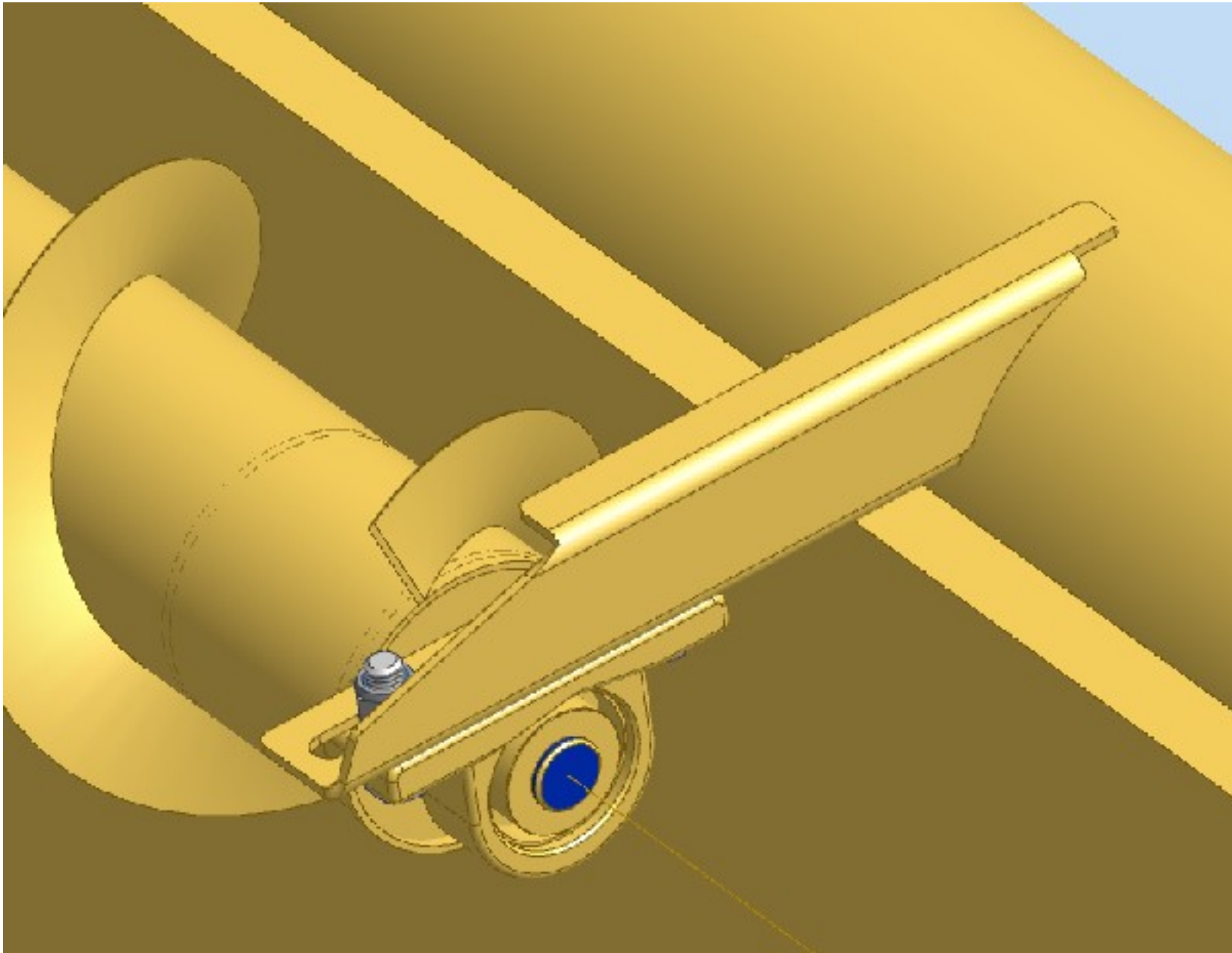
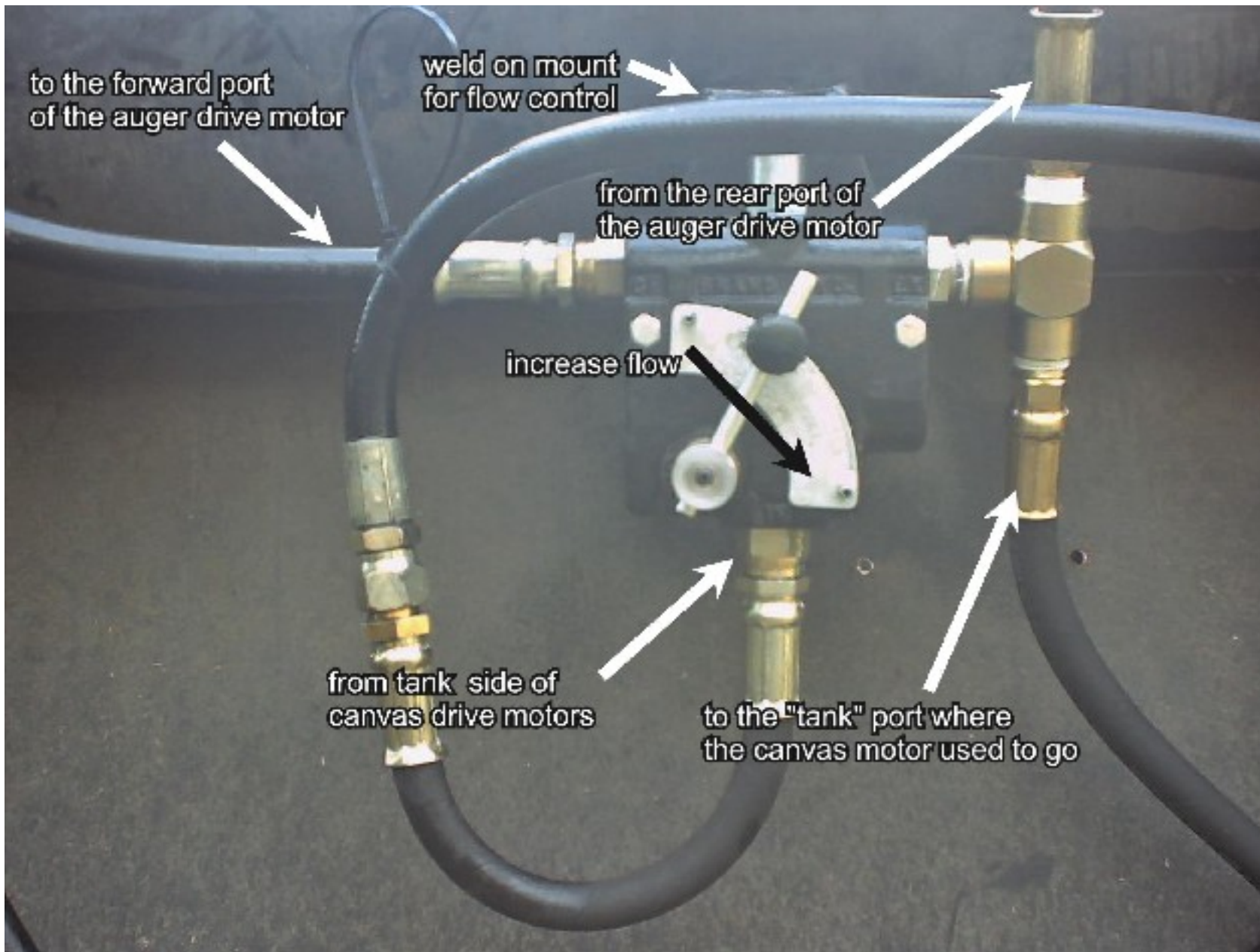


FIGURE 6 LEFT HAND END MOUNT



## 5. OPERATIONS



**DANGER**

**Stay clear of auger whenever it is running**

### 5.1. FIELD SETTING THE CROSS AUGER

Most cross augers can only be adjusted for speed or rotation. The correct speed for many crop would be to have the flighting advancing the crop along the canvas 5% or slightly faster than the canvas speed. To adjust rotate the handle on the flow control clockwise to increase speed, counter clockwise to decrease speed. Observe the auger from the combine operating platform. Focus your eye on one auger flighting and compare to a particular canvas slat. The two item can be adjusted to run at the same rate, and then slightly increase the cross auger.

## **6.SPECIFICATIONS -**



## 7.PARTS

## 8. WARRANTY

1. Ag Shield Manufacturing warrants each new Ag Shield reconditioner to be free from factory defects in material and workmanship under normal use and service, when set up and operated in accordance with factory instructions for one year from the date of delivery to the original purchaser.
2. Ag Shield's obligation under this warranty is limited to the supplying of replacement parts which are defective due to factory workmanship or material.
3. Your Ag Shield Dealer is responsible for providing warranty labour. Credit for required labour is specifically agreed to on an individual case basis.
4. The warranty is void on any unit which has been tampered with, or modified in any way not authorized in writing by the factory.
5. This warranty is void on any unit which is subject to misuse, negligence or accident, or which has had the serial number tampered or removed.
6. A "Warranty Claim Form" (sample at end of handbook) must be submitted to Ag Shield with returned parts in order for parts to be considered for warranty examination.
7. A warranty registration page from the front of this manual must be returned to the factory in order to qualify for warranty examination.
8. All returned parts must be sent to the factory freight prepaid, and warranty parts will be returned to you freight collect.
9. Replacement parts shipped pending receipt of parts for examination will be invoiced, and remain on your account until such time as examination indicates that a credit for those parts be issued or that payment is due.
10. Parts not returned for warranty examination within 30 days must be paid for at that time. Ag Shield will immediately reimburse any cash paid for items that are later determined defective.
11. Warranty terms and conditions are subject to provincial and state legislation.

WARRANTY CLAIM FORM

**Ag Shield Mfg**

Box 9, Benito,  
 MB, ROL 0C0  
 ph 800-561-0132  
 fax 204-539-2130  
 ph 204-539-2000i

Dealer			Ag Shield Mfg Box 9, Benito, MB, ROL 0C0 ph 800-561-0132 fax 204-539-2130 ph 204-539-2000i			End User		
Address						Address		
City	State/Province	Zip/Postal				City	State/Province	Zip/Postal
DATE OF SALE	DATE FAILED	REPAIR DATE	ACRES/HOURS	MODEL	SERIAL NUMBER			
LABOUR HOURS	LABOUR RATE	LABOUR AMOUNT	PARTS MUST BE RETURNED TO BENITO MB FREIGHT PREPAID TO BE CONSIDERED FOR WARRANTY. DATE SHIPPED					
QUANTITY ITEM	PART NUMBER	DESCRIPTION	PRICE EACH	TOTAL PRICE	DESCRIBE THE CAUSE OF FAILURE AND CORRECTIVE ACTION TAKEN	APPROVE /REJECT		
1								
2								
3								
4								
5								
6								
7								
8								
I CERTIFY THAT THE INFORMATION IS ACCURATE AND THAT THE PARTS WERE REPLACED ON THE MACHINE			PARTS		DATE PARTS RECD	RECD BY		
			LABOUR		ITEMS TO SUPPLIERS			
			TOTAL					

SHADED AREAS AG SHIELD USE ONLY ---PLEASE ADD DETAILS FOR ITEM NUMBERS ON BACK

