

AG SHIELD



**12" Cross Augers for Case 1042
Header- MacDon 962-
30ft (ASM part # 405824) Direct drive
36ft (ASM part # 405826) Direct drive**

OPERATOR'S HANDBOOK AND PARTS MANUAL

Ag Shield Manufacturing
Box 9, Benito, Manitoba R0L 0C0
Phone 800-561-0132 or 204-539-2000
Fax 204-539-2130
Email address: sales@agshield.com
Web site at <http://www.agshield.com>

Printed in Canada

June 17, 2013

Revision 1

-Part No 405910

1. TABLE OF CONTENTS

1.	TABLE OF CONTENTS	3
2.	INTRODUCTION AND SIGN-OFF FORM	4
3.	SAFETY	5
3.1.	SAFETY OVERVIEW	6
3.2.	GENERAL SAFETY	6
3.3.	MAINTENANCE SAFETY	7
3.4.	HYDRAULIC SAFETY	7
3.5.	STORAGE SAFETY	7
3.6.	TRANSPORT SAFETY	7
3.7.	REFUELING SAFETY	8
3.8.	TIRE SAFETY	8
3.9.	OPERATING SAFETY	8
3.10.	CROSS AUGER SAFETY	8
3.11.	SAFETY DECALS	9
4.	36 FOOT BOLT ON SETUP FROM SHIPPING MODE	10
4.1.	WELD ON CENTER MOUNT (SOME MODELS)	17
4.2.	MOTOR INSTALLATION	20
4.3.	STRIPPER BAR INSTALLATION	21
5.	OPERATIONS	22
5.1.	FIELD SETTING THE CROSS AUGER	22
6.	PARTS FOR MACDON 962/ CASE 1042 36 FT HEADER	23
6.1.	OVERVIEW OF CASE 1042 36FT CROSS AUGER	23
6.2.	RIGHT HAND END MOUNT CASE 1042 36 FOOT	24
6.3.	CENTER MOUNT CASE 1042 36 FOOT	25
6.4.	LEFT END MOUNT CASE 1042 36 FOOT	26
7.	WARRANTY	27

3. SAFETY

SAFETY ALERT SYMBOL

This Safety Alert symbol means:
ATTENTION! BECOME ALERT!
YOUR SAFETY IS INVOLVED!

The Safety Alert symbol identifies important safety messages on the Ag Shield Cross auger and in the manual. When you see this symbol, be alert to the possibility of personal injury or death. Follow the instructions in the safety message.



3 Big Reasons

Accidents Disable and Kill
Accidents Cost
Accidents Can Be Avoided

SIGNAL WORDS:

Note the use of the signal words **DANGER**, **WARNING** and **CAUTION** with the safety messages. The appropriate signal word for each message has been selected using the following guide-lines:

- DANGER** - An immediate and specific hazard which **WILL** result in severe personal injury or death if the proper precautions are not taken.
- WARNING** - A specific hazard or unsafe practice which **COULD** result in severe personal injury or death if proper precautions are not taken.
- CAUTION** - Unsafe practices which **COULD** result in personal injury if proper practices are not taken, or as a reminder of good safety practices.

3.1. SAFETY OVERVIEW

YOU are responsible for the **SAFE** operation and maintenance of your Ag Shield Cross auger. **YOU** must ensure that you and anyone else who is going to operate, maintain or work around the Cross Auger be familiar with the operating and maintenance procedures and related **SAFETY** information contained in this manual. This manual will take you step-by-step through your working day and alerts you to all good safety practices that should be adhered to while operating the canola pusher.

Remember, **YOU** are the key to safety. Good safety practices not only protect you but also the people around you. Make these practices a working part of your safety program. Be certain that **EVERYONE** operating this equipment is familiar with the recommended operating and maintenance procedures and follows all the safety precautions. Most accidents can be prevented. Do not risk injury or death by ignoring good safety practices.

- Cross auger owners must give operating instructions to operators or employees before allowing them to operate the Cross auger, and at least annually thereafter per OSHA regulation 1928.57.
- The most important safety device on this equipment is a **SAFE** operator. It is the operator's responsibility to read and understand **ALL** Safety and Operating instructions in the manual and to follow these. All accidents can be avoided.
- A person who has not read and understood all operating and safety instructions is not qualified to operate the machine. An untrained operator exposes himself and bystanders to possible serious injury or death.
- Do not modify the equipment in any way. Unauthorized modification may impair the function and/or safety and could affect the life of the equipment.
- Think SAFETY! Work SAFELY!

3.2. GENERAL SAFETY

1. Read and understand the Operator's Manual and all safety signs before operating, maintaining, adjusting the Cross auger.
2. Only trained competent persons shall operate the cross auger. An untrained operator is not qualified to operate the machine.



3. Have a first-aid kit available for use should the need arise and know how to use it.

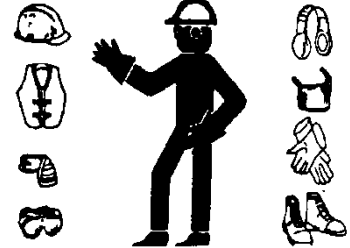


4. Have a fire extinguisher available for use should the need arise and know how to use it.



5. Do not allow riders.

6. Wear appropriate protective gear. This list includes but is not limited to:



- A hard hat
 - Protective shoes with slip resistant soles
 - Protective glasses or goggles
 - Heavy gloves
 - Hearing protection
7. **Stop the engine, place all controls in neutral, set park brake, remove ignition key and wait for all moving parts to stop before servicing, adjusting, repairing or unplugging.**
 8. Review safety related items with all personnel.

3.3. MAINTENANCE SAFETY

1. Review the Operators Manual and all safety items before working with, maintaining or operating the Cross auger.
2. Stop the engine, place all controls in neutral, set park brake, remove ignition key, wait for all moving pads to stop before servicing, adjusting, or repairing.
3. Before applying pressure to a hydraulic system, make sure all components are tight and that steel lines, hoses and couplings are not damaged.
4. Relieve pressure from hydraulic circuit before servicing or disconnecting from tractor.
5. Keep hands, feet, clothing and hair away from all moving and/or rotating parts.
6. Clear the area of bystanders, especially children, when carrying out any maintenance and repairs or making any adjustments.
7. Place stands or blocks under the frame before working beneath the machine.

3.4. HYDRAULIC SAFETY

1. Always place all tractor hydraulic controls in neutral before dismounting.
2. Make sure that all components in the hydraulic system are kept in good condition and are clean.
3. Replace any worn, cut, abraded, flattened or crimped hoses and steel lines.
4. Do not attempt any makeshift repairs to the hydraulic lines, fittings or hoses by using tape, clamps or cements. The hydraulic system operates under extremely high-pressure. Such repairs will fail suddenly and create a hazardous and unsafe condition.
5. Wear proper hand and eye protection when searching for a high-pressure hydraulic leak. Use a piece of wood or cardboard as a backstop instead of hands to isolate and identify a leak.
6. If injured by a concentrated high-pressure stream of hydraulic fluid, seek medical attention immediately. Serious infection or toxic reaction

can develop from hydraulic fluid piercing the skin surface.

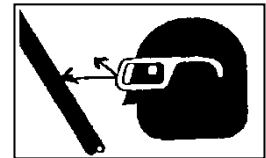
7. Before applying pressure to hydraulic system make sure that all connections are tight and that all hoses and fittings are in good condition.

3.5. STORAGE SAFETY

1. Store unit in an area away from human activity.
2. Do not permit children to play on or around the stored Cross auger.

3.6. TRANSPORT SAFETY

1. Read and understand ALL the information in the Operator's Manual regarding procedures and SAFETY when operating the Cross auger in the field and/or on the road.
2. Check with local authorities regarding machinery transport on public roads. Obey all applicable laws and regulations.



3. Always travel at a safe speed. Use caution when making corners or meeting traffic.
4. Make sure the SMV (Slow Moving Vehicle) emblem and all the lights and reflectors that are required by the local highway and transport authorities are in place, are clean and can be seen clearly by all overtaking and oncoming traffic. Daybreak and dusk are particularly dangerous and pilot vehicles are recommended.
5. Ensure that the trailer is hitched positively to the towing vehicle. Always use a safety chain between the trailer and the tractor.
6. Keep to the right and yield the right-of-way to allow faster traffic to pass. Drive on the road shoulder, if permitted by law.

7. Always use hazard warning flashers on the Cross auger when transporting unless prohibited by law.

3.7. REFUELING SAFETY

1. Handle fuel with care. It is highly flammable.



2. Do not refuel the machine while smoking or when near open flame or sparks.

3. Stop engine before refueling. Clean up spilled fuel before restarting engine.

3.8. TIRE SAFETY

1. Failure to follow proper procedures when mounting a tire on a wheel or rim can produce an explosion, which may result in serious injury or death.
2. Do not attempt to mount a tire unless you have the proper equipment and experience to do the job.
3. Have a qualified tire dealer or repair service perform required tire maintenance.
4. Operate the tires at the pressures, loads, and speeds suggested by the manufacturer.

3.9. OPERATING SAFETY

1. Read and understand the Operator's Manual and all safety signs before using.
2. Stop engine place all controls in neutral, set park brake, remove ignition key, wait for all moving parts to stop before servicing, adjusting, repairing or unplugging.
3. Before conditioning a field, be familiar with all potential hazards: trees, rocks ditches, gullies, etc. Plan your route to avoid hazards. Keep Cross auger width in mind when maneuvering to avoid obstacles.
4. Keep hands, feet, hair and clothing away from all moving and/or rotating parts.
5. Keep all shields and guards in place when operating.
6. Do not allow riders on the Cross auger or tractor during operation or transporting.

7. Clear the area of all bystanders, especially children, before starting.
8. Stay away from machine when folding deflectors. Keep others away.
9. Before applying pressure to the hydraulic system, make sure all components are tight and that steel lines, hoses and couplings are not damaged.
10. Review safety instructions annually

3.10. CROSS AUGER SAFETY

The cross auger has sufficient power to sever limbs and cause serious to fatal injury. Always stop the cross auger before dismounting. Always be certain that no one is in front of combine header Shield before engaging the auger drive.

When greasing the auger, do so with the combine motor shut off and the park brake securely set.

Never attempt to help the crop move along the canvases with a wrench or other item that might get into the auger and draw the wrench holder into the auger.

3.11. SAFETY DECALS

Become familiar with these decals and the hazards they are marking.



part #113522

part #113524



part # 113552

4. 36 foot bolt on setup from Shipping Mode

Operator's handbook for Ag Shield Cross auger to fit on to a 30 ft MacDon 962 header- section for 36 ft bolt on kit.

Please note that the colors in the instructions refer to the manual colors, not the actual color the kit parts are painted

Figure 1 Complete header- 36 ft case 1042, kit# 405826- bolt on mounts.....	11
Figure 2 Left end mount (ISOMETRIC VIEW)	12
Figure 3 Left hand end mount (TOP VIEW).....	12
Figure 4 Right hand end mount.....	13
Figure 5 Right hand end mount (TOP VIEW).....	14
Figure 6 Center auger MOUNT WITH plastic cover removed	14
Figure 7 Center Auger Mount (TOP VIEW)	15
Figure 8 Center MOUNT - drill 4 HOLES in the reel cylinder Mount plates header	15
Figure 9 Drill pattern for center mount	16
Figure 10 Install the joiner link into chain coupler with one side bent out of way	18
Figure 11 Hoses on 30 + 36 ft Agco headers	19
Figure 12 Sauer Motor speed control	22

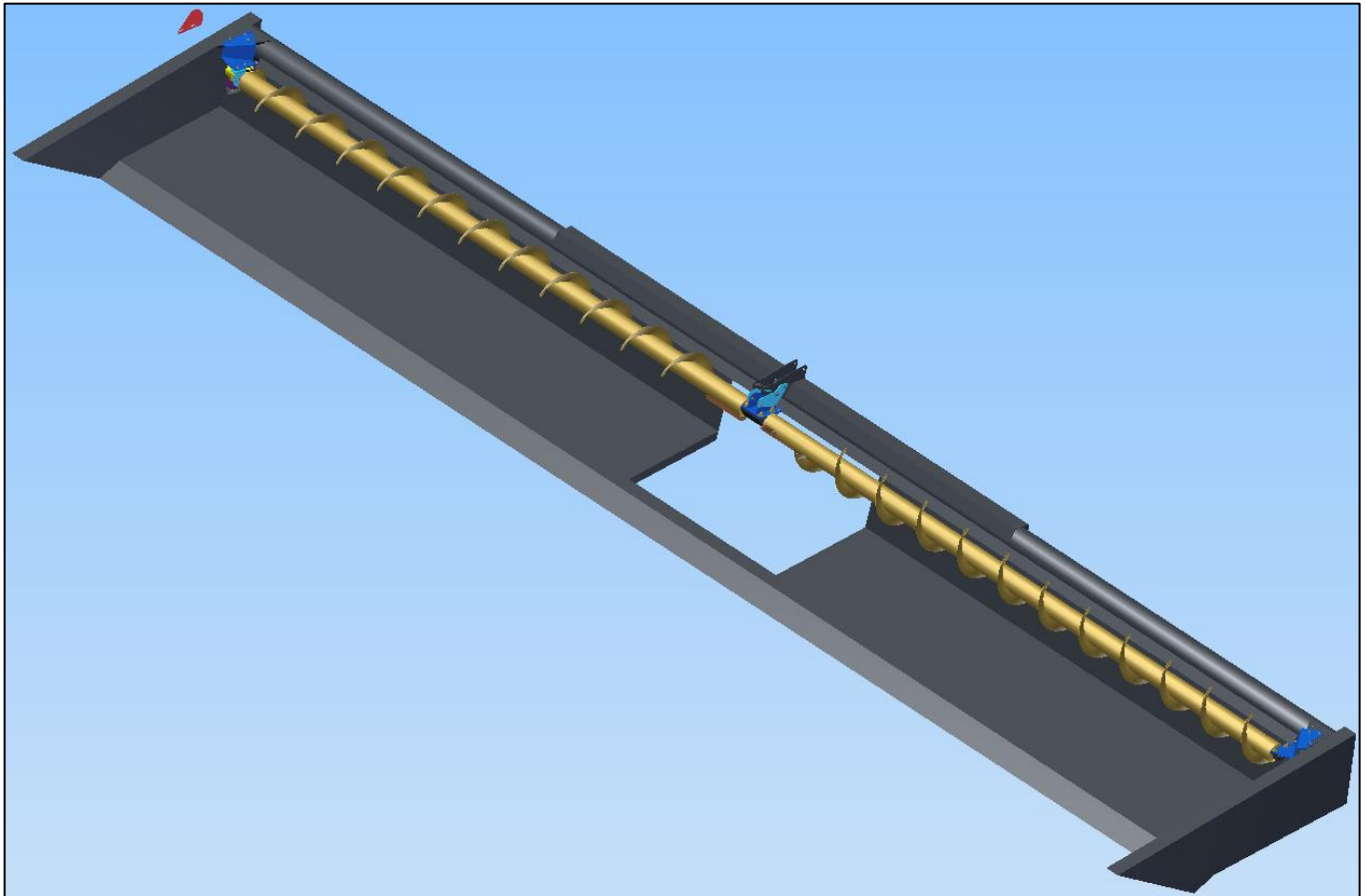


FIGURE 1 COMPLETE HEADER- 36 FT CASE 1042, KIT# 405826- BOLT ON MOUNTS

Most factory built headers were built with no focus on having a cross auger, pea auger or other attachment to assist in feeding the crop into the feeder house of the combine. The first units were weld on; this 36 foot kit is a drill on – that the installer places the parts close to where they belong, and drills the holes in the center of the slots, and allows mounts can be shifted around on the slots to allow a correct installation on headers that are not always built the same.

The criteria for best install are:

1. The rear edge of the flighting is $\frac{1}{4}$ " from the rear face of the back board.
2. The height of the auger is predetermined at the end mounts – ensure that the center is at a similar height when completed.
3. The auger must rotate down on the forward edge to move materials down and to the center.
4. Start from the LH Bearing mount end and work across.

The part pages are also useful to find particular fastener sizes and other details.

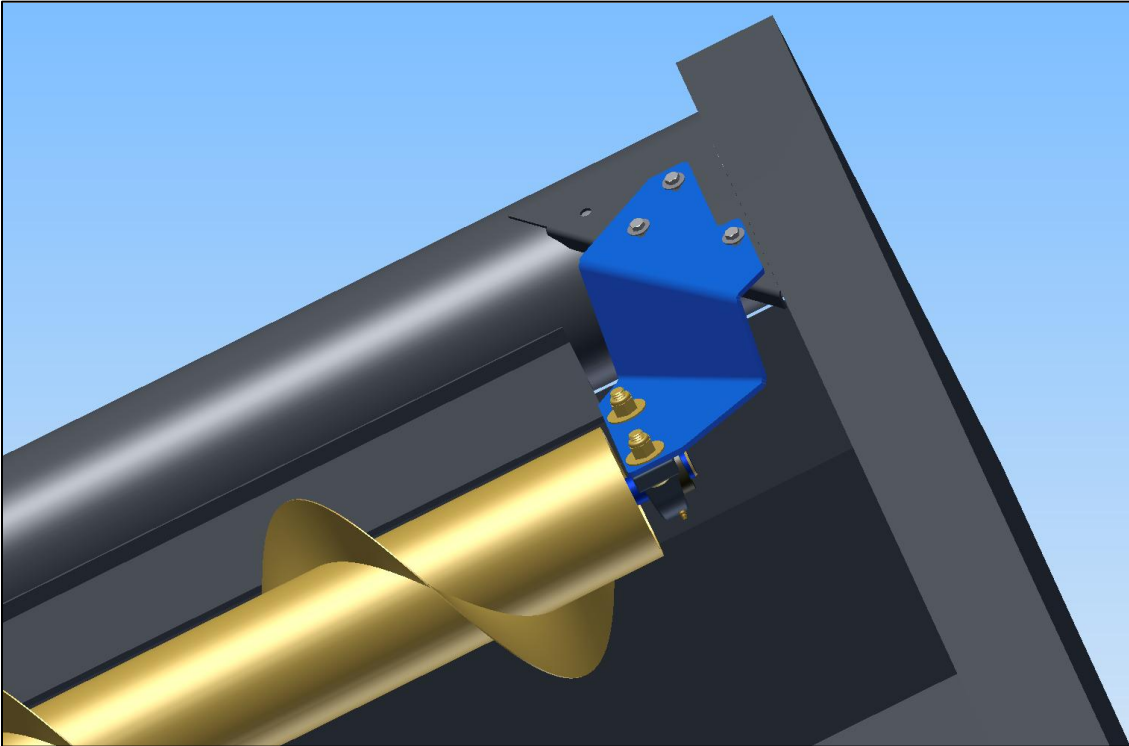


FIGURE 2 LEFT END MOUNT (ISOMETRIC VIEW)

1. Locate the left hand mount, and clamp the left hand end mount onto the angle tin in the upper corner of the header, the Ag Shield is placed .25 inches to the inside of header to gusset line, and 3.375" from the top or rear edge of gusset, This should leave the center of the mount 6.5 inches from the around on the slots as necessary. Drill hole 3/8" or slightly larger . bolt the mount in place

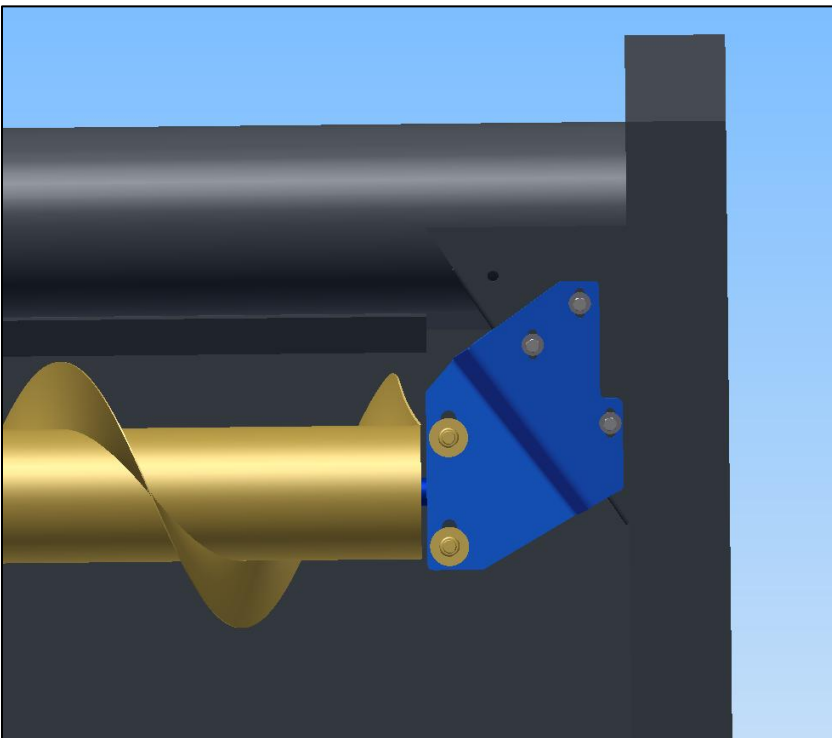


FIGURE 3 LEFT HAND END MOUNT (TOP VIEW)

1. Locate the right hand mount, and clamp the right hand end mount to the header, the Ag Shield mount is placed .25 inches to the inside of header to gusset line, and 3.375" from the top edge of gusset, This should leave the center of the motor mount holes 6.5 inches from the around on the slots as necessary. Drill hole 3/8" or slightly larger . bolt the mount in place.

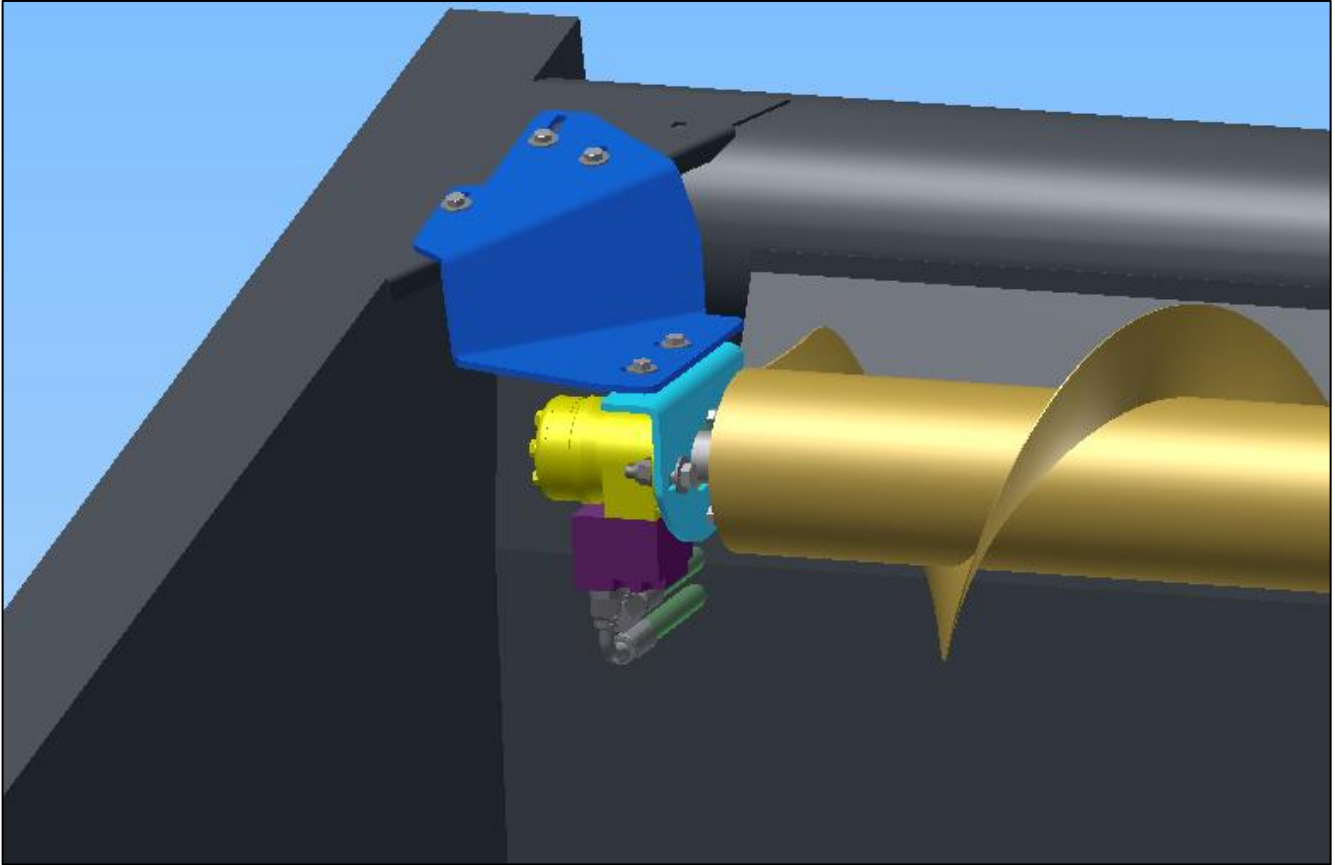
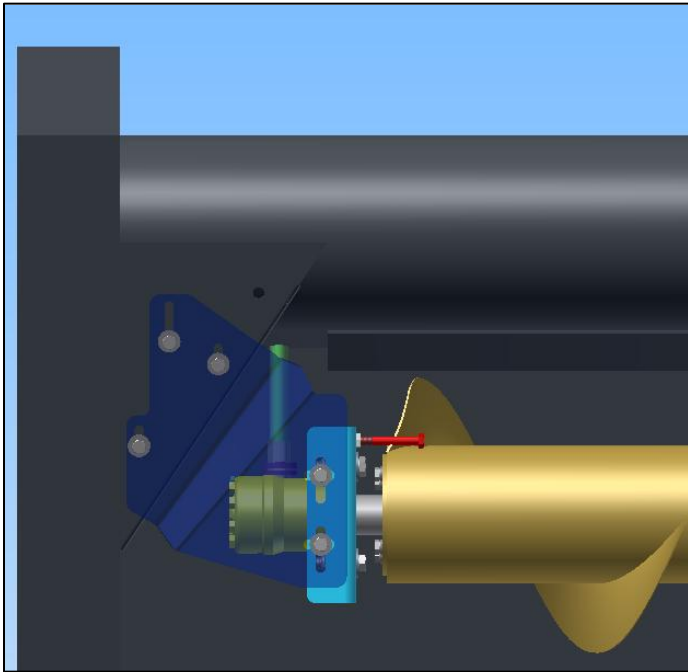


FIGURE 4 RIGHT HAND END MOUNT

1. see Figure 9 Drill pattern for center mount-----Locate the 3 different pieces of the center mount, observe the direction below regards where to drill holes to mount the sky blue colored outer plates that hold the dark blue mount in place. Mark the holes, drill the holes with 1/2- 9/16" bit, and bolt loosely into place.



Note the **stop bolt** is used to completely stop the auger from turning IF you have a reason. The normal position is to have the **stop bolt** stored on the motor side of the blue mounting bracket.

To use the **stop bolt** - install the bolt into the path of the rotating auger as show, and then completely open the bypass adjusting valve so that excessive back pressure is not built up in the canvas circuit.

Figure 5 Right hand end mount (TOP VIEW)

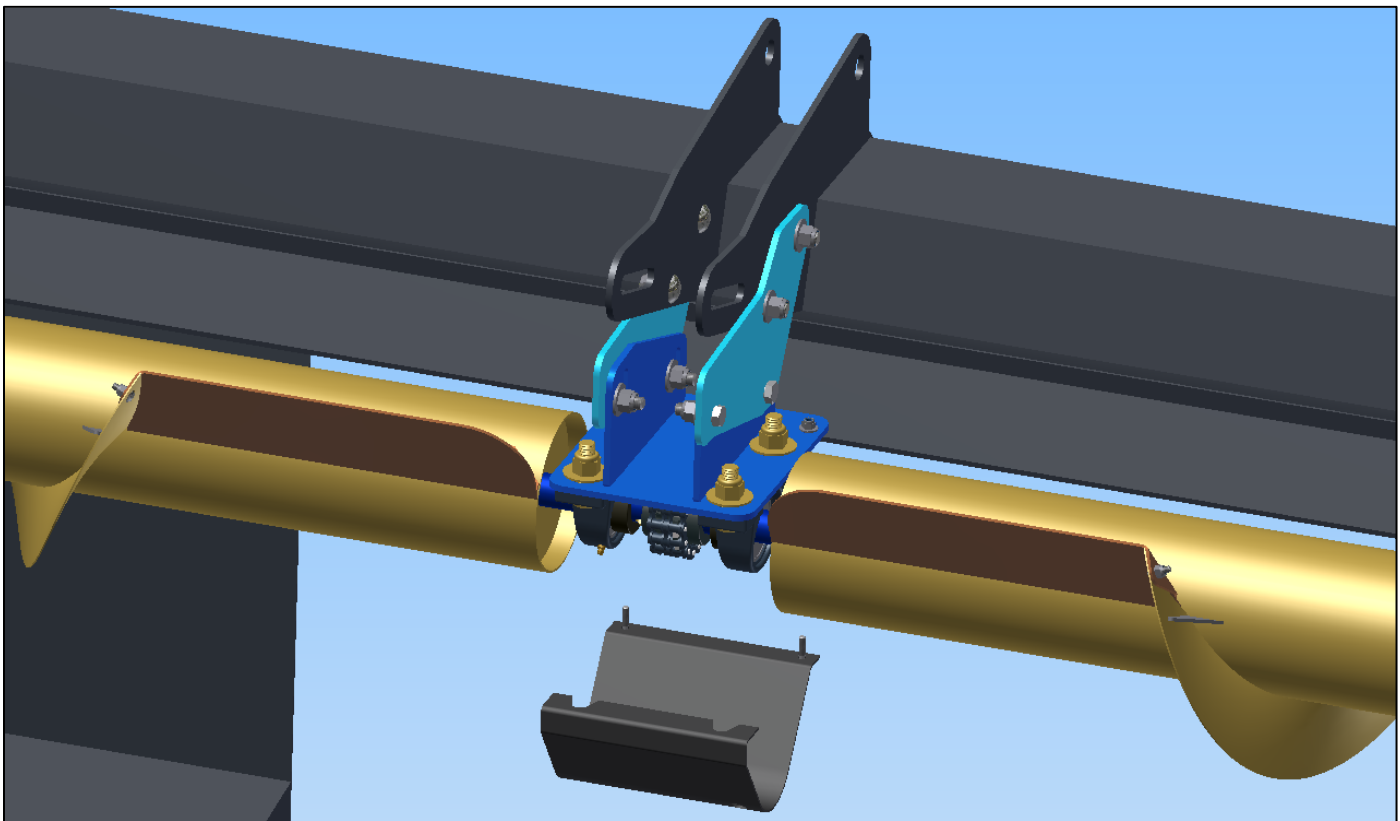


FIGURE 6 CENTER AUGER MOUNT WITH PLASTIC COVER REMOVED

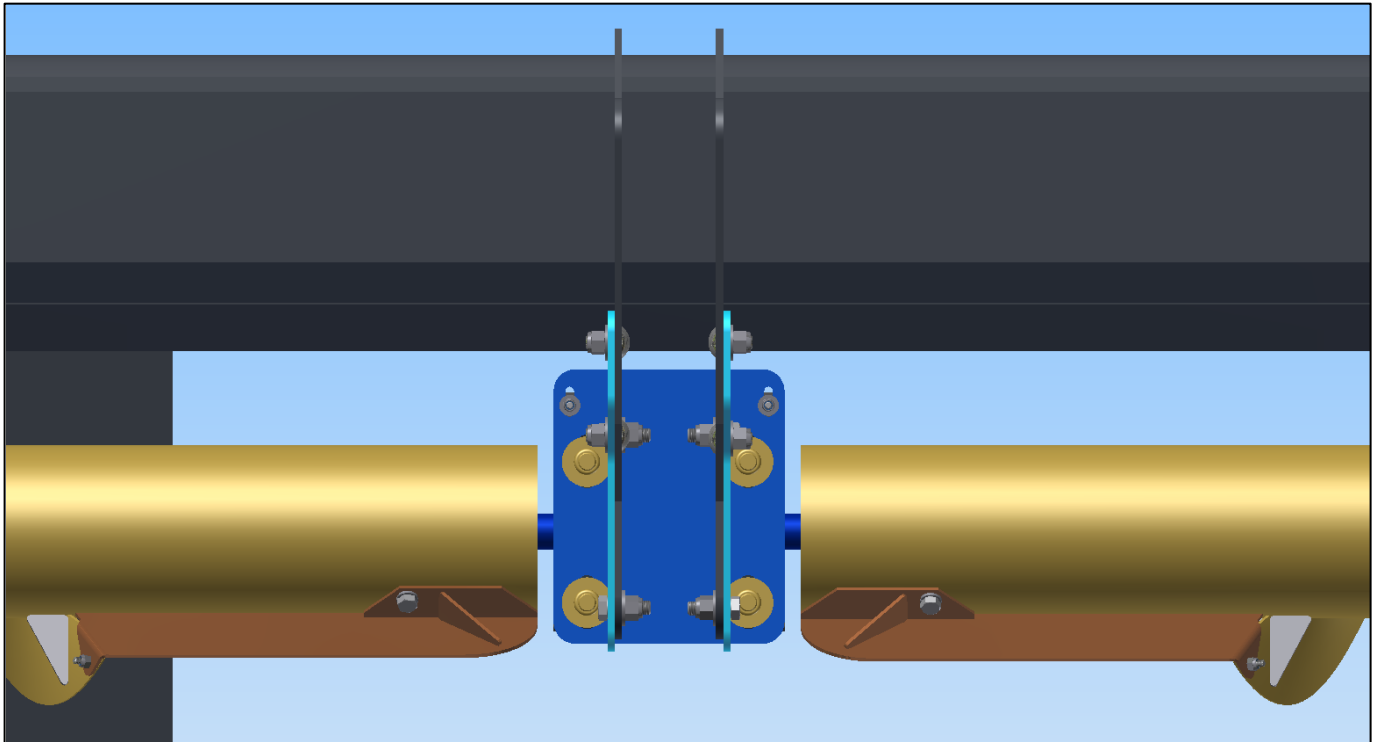


FIGURE 7 CENTER AUGER MOUNT (TOP VIEW)

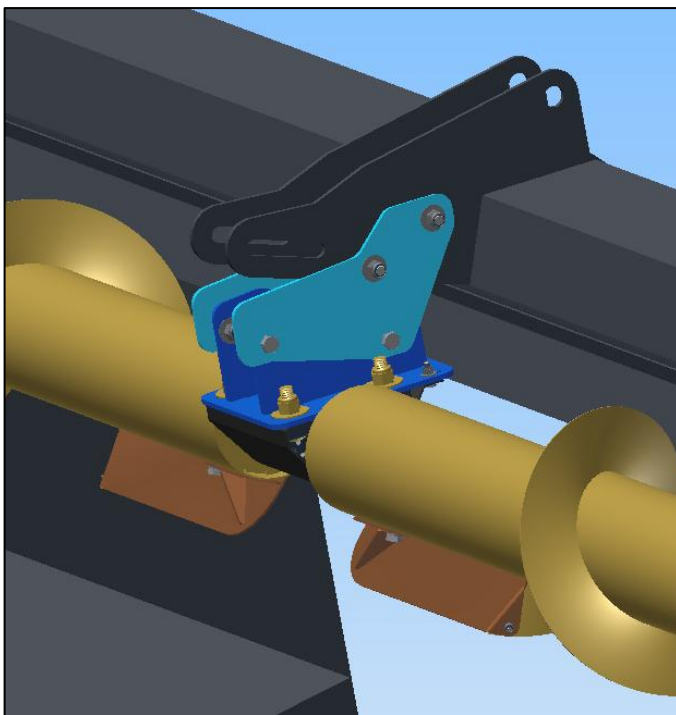


FIGURE 8 CENTER MOUNT - DRILL 4 HOLES IN THE REEL CYLINDER MOUNT PLATES HEADER

The approximate hole locations are detailed below, the side plates should be 1.38 or 1 3/8" below and parallel to the lower side of cylinder mount. The rear edge of the mount is 3.48 (approximately 3 1/2") inches ahead. The slot allows proper position before final tighten.

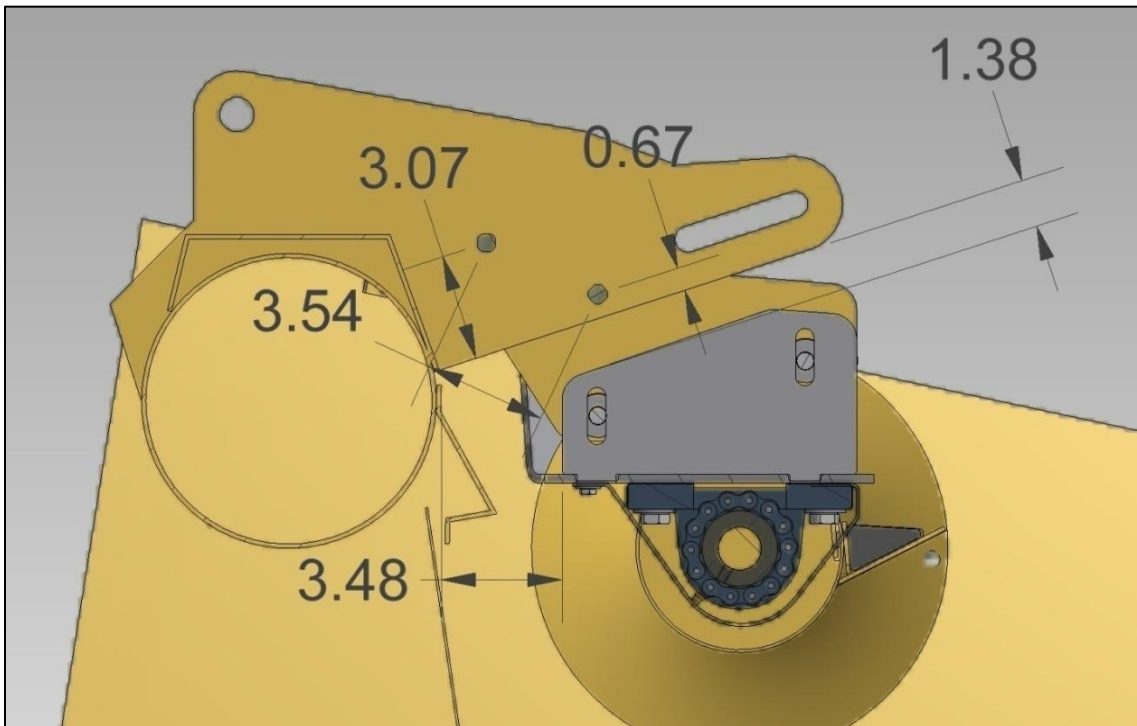


FIGURE 9 DRILL PATTERN FOR CENTER MOUNT

Identify the left auger by the part numbers listed - and the number sticker on the center end of the auger. Note that the flighting will move material toward center when turning down on the forward edge of the auger. The 14 inch removable paddle goes to the center of header. With the sprockets and bearing flanges on the end, lift the left auger into position. Bolt loosely into place. Position the auger $\frac{1}{4}$ " or less from the back edge of header. Tighten the bearing mount bolts The header acts as the stripper that prevents crop from wrapping around the auger. Adjusting closer than $\frac{1}{4}$ " is better, but usually not necessary

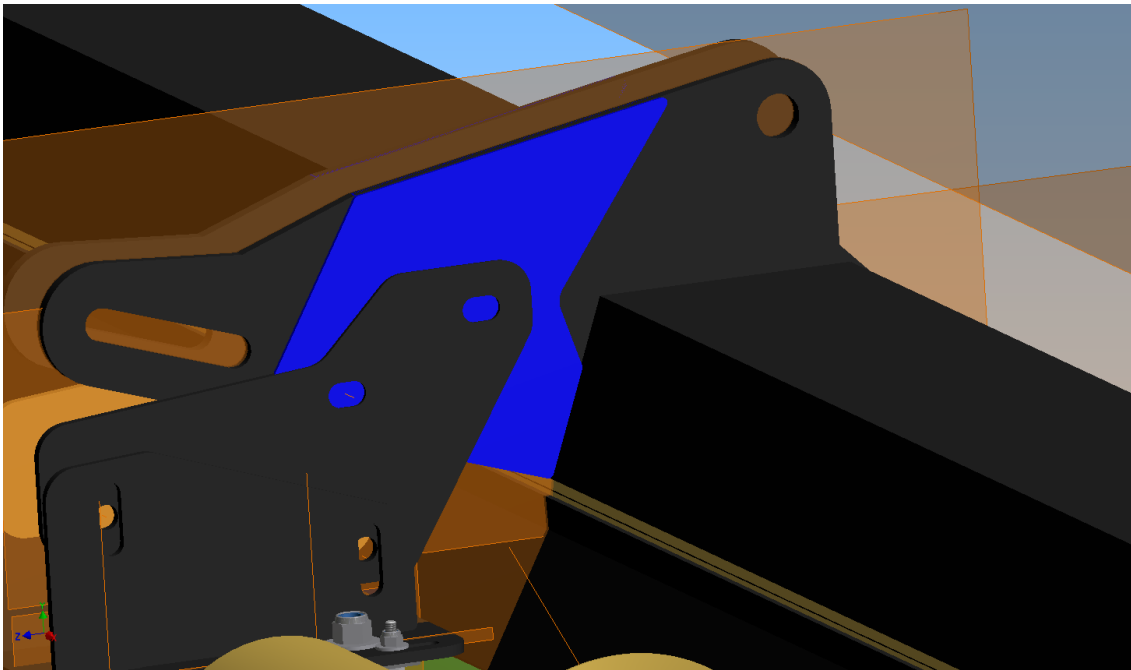
Identify the right auger by the part numbers listed - and the number sticker on the center end of the auger. Note that the flighting will move material toward center when turning down on the forward edge of the auger. The 14 inch removable paddle goes to the center of header. With the motor, motor mounts, sprockets and bearing flanges on the end, lift the right auger into position. Bolt loosely into place. Position the auger $\frac{1}{4}$ " or less from the back edge of header. Tighten the bearing mount bolts The header acts as the stripper that prevents crop from wrapping around the auger. Adjusting closer than $\frac{1}{4}$ " is better, but usually unnecessary.

1. Join the 2 augers with the chain coupler.
2. Install the center black plastic cover over center bearings
3. Observe that the right auger is $\frac{1}{4}$ inch from the frame to the flighting, BUT ALSO lined up to have the chain coupler easily wrapped around the 2 sprockets. Snug both center bearings before installing chain coupler.
4. **Be sure to adjust the center mount forward and aft, Depending on what center drum attachment is on the unit.**
5. **Raise the center drum on the header as high as it will go, with the header tilted back, and check for clearance between the auger and the drum fingers.**
6. **Adjust the auger accordingly to have clearance between the auger flighting and paddle vs. the drum and fingers.**

4.1. WELD ON CENTER MOUNT (SOME MODELS)



If your header does not have the center mount ears for the Ag Shield auger mount. A weld on piece will be provided upon request.



Place the blue plate onto the header and weld to the existing ears.
Drill holes in plate for the center mount.
Part number 408141

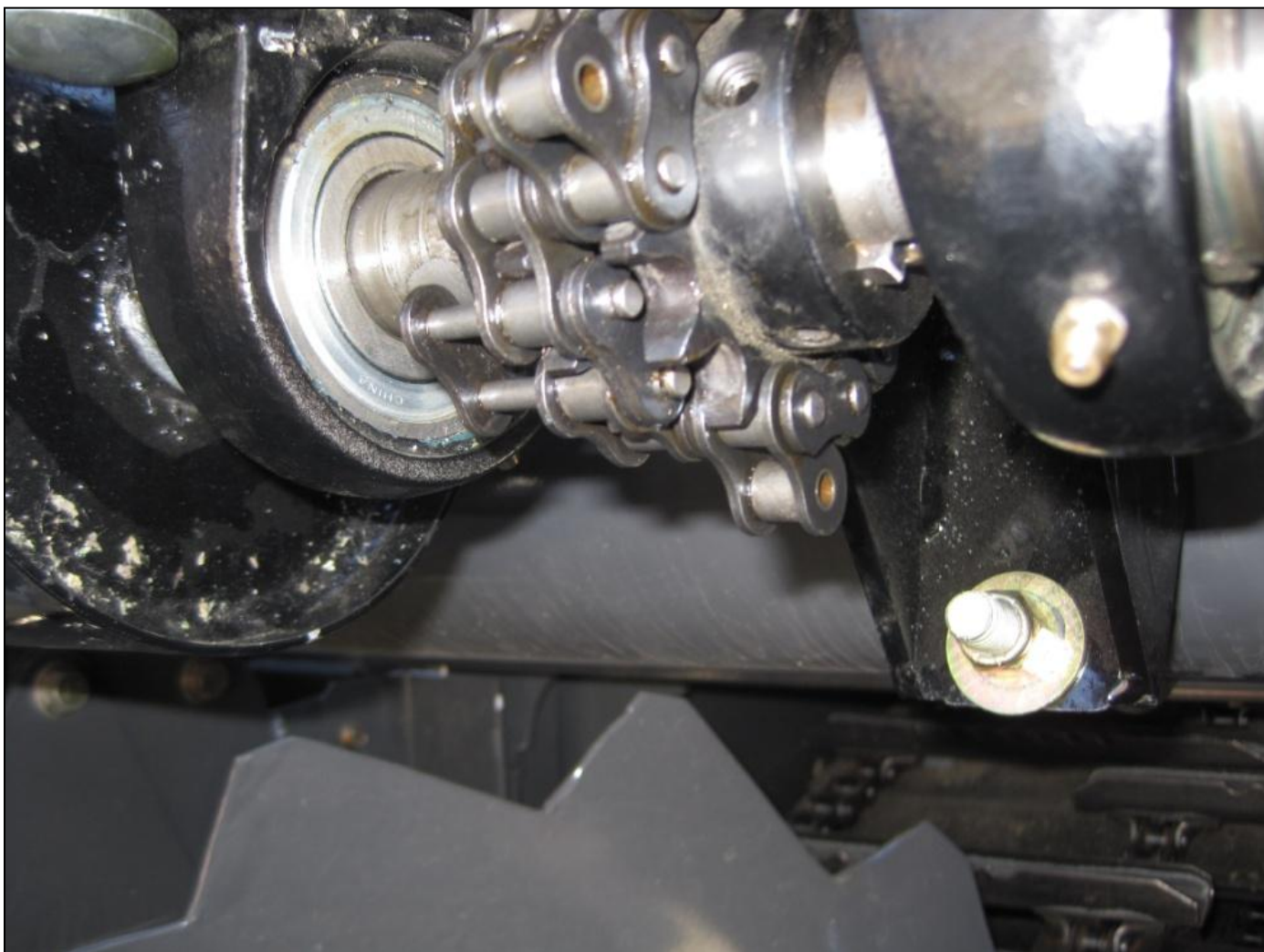


Figure 10 Install the joiner link into chain **coupler with one side bent out of way .**

1. Install hydraulic hoses as follows:
2. install the adapter and hoses on to the new Ag Shield motor as shown in parts page 24-- section Right Hand end MOUNT CASE 1042 36 foot.
3. The rear hose of the motor, part #118816 will connect to fitting "G" below- the tank return line of the draper motor becomes the pressure line of the Ag shield auger motor. .
4. The forward hose on the Ag Shield motor- part # 118825 will connect to hose "H" below.
5. Test direction of rotation to be down on the front of the auger. for operation in field, set speed of the canvases, and use the flow control supplied to set the auger flighting speed to be 5% or slightly greater than the canvases. see operations below. Below is not a photo of a 1042 Case - but the principal applies, Determine the correct rotation of the motor as follows. The oil will enter the pressure port of the motor and go the long way around the motor to arrive the tank line



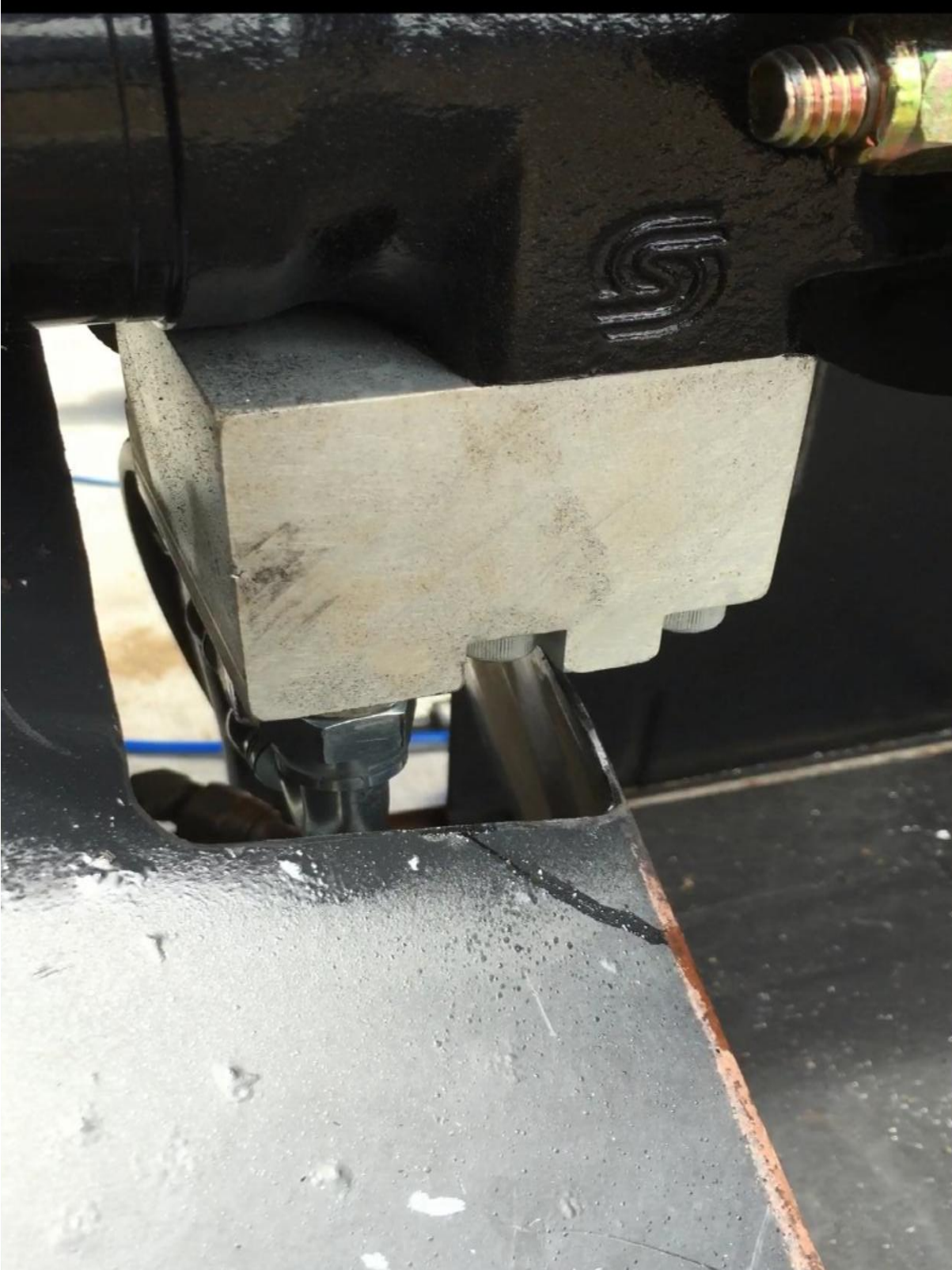
FIGURE 11 HOSES ON 30 + 36 FT AGCO HEADERS

Remove the Return line from the Canvas motor.

Route the pressure hose from port B on the Ag Shield motor to the return port on the Canvas motor

Route the Return hose from port A on the Ag Shield motor to the hose that was taken off of the Canvas motor

4.2. MOTOR INSTALLATION



Notch tin in side of header for motor to fit in.

4.3. STRIPPER BAR INSTALLATION

- 1) All Ag Shield augers now come with a stripper bar to help prevent crop from wrapping on the auger, as well as to provide a cleaner transfer of crop to the center of the header.
- 2) Put the stripper bar on last after the auger has been installed and tested. This will ensure the height of the auger does not change after the stripper bar height has been set.



- 3) Hold stripper bar up to the back board and mark the holes in the middle of the slot (every second hole will be fine)
- 4) A magnet will help hold one end if installing alone.
- 5) Make sure before drilling that the drill will not damage anything behind the back board (hyd fittings hoses etc)
- 6) Drill 3/8" holes in the middle of the slot in the back board.
- 7) Set the stripper bar to be 1/4" below the flighting.
- 8) Tighten the stripper bar to the back board.

5. OPERATIONS



DANGER

Stay clear of auger whenever it is running

5.1. FIELD SETTING THE CROSS AUGER

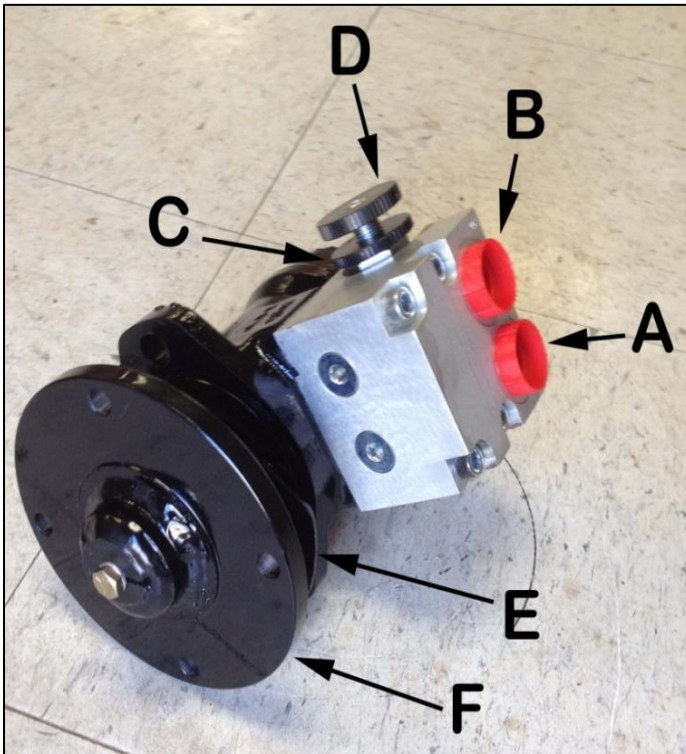


FIGURE 12 SAUER MOTOR SPEED CONTROL

Terminology

- A: Return or tank line
- B: Pressure line
- C: Lock wheel
- D: Auger speed adjustment
- E: Shim for hydraulic motor mount
- F: Direct driver motor adapter

Cross augers can only be adjusted for speed of rotation. In many conditions, the correct speed for many crops would be to have the flighting advancing the crop along the canvas 5% or slightly faster than the canvas speed. To increase auger speed, loosen lock wheel A counterclockwise, rotate adjust valve C clockwise, relock the valve by turning A clockwise. Closing this valve reduces the bypass of oil around the hydraulic motor. To slow down the rpm of the auger, rotate adjust valve C counterclockwise.

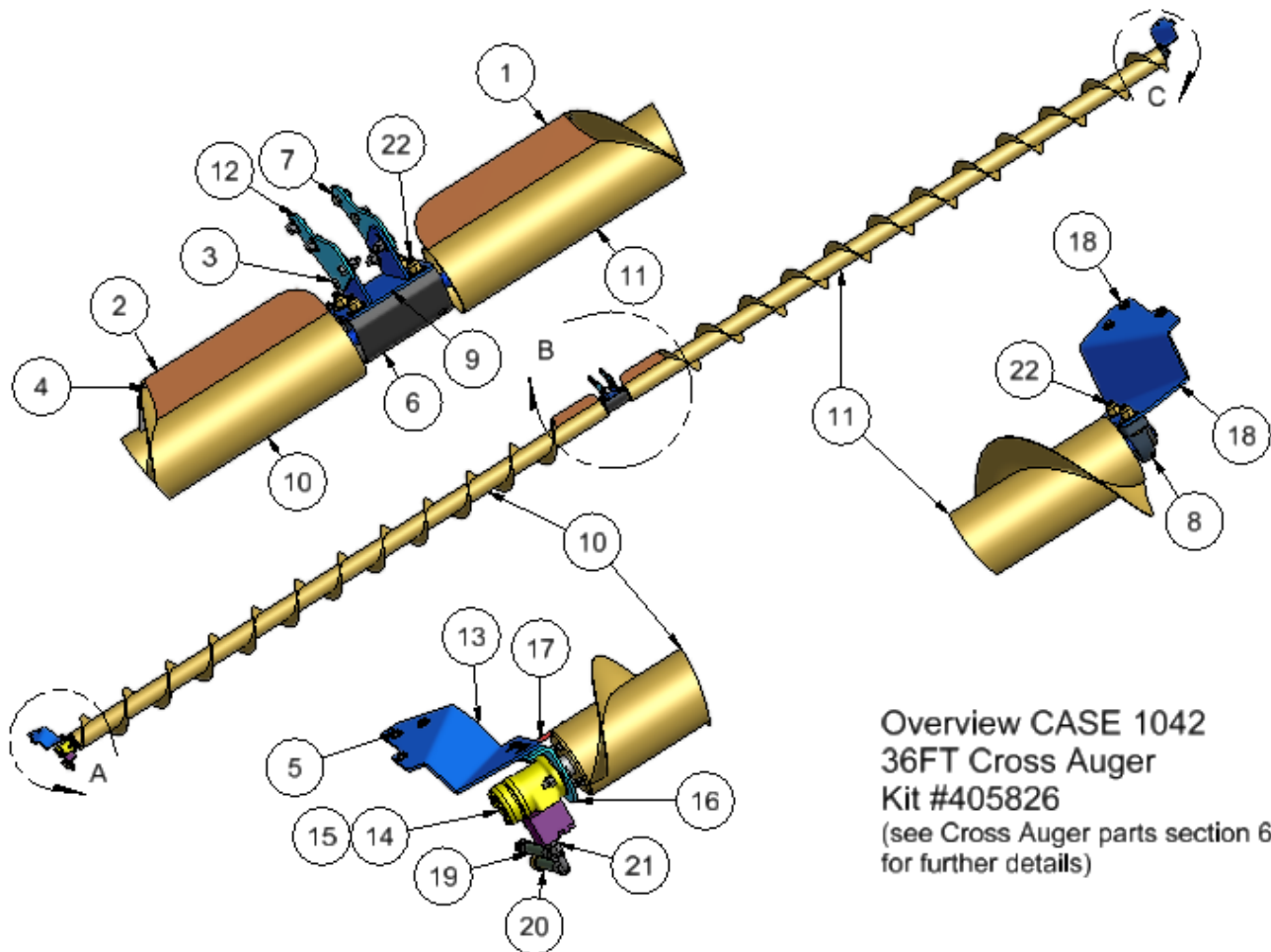
Observe the auger from the combine cab or swather operating platform. Focus your eye on one auger flighting and compare to a particular canvas slat. The auger can be adjusted to run at the same rate in feet per minute. As desired, slightly increase the cross auger to have it pulling ahead faster than the canvas.

In peas, augers can often be operated at a very slow speed--- 30% of canvas speed, and still feed as much crop into combine. When augers turn slower, there are fewer tendencies to wrap.

If wrapping occurs at the center of the header, try removing one or both of the bolts on paddles. In some conditions the paddles are an advantage, in some conditions the paddles are a disadvantage.

6. Parts for MacDon 962/ Case 1042 36 ft header

6.1. OVERVIEW OF CASE 1042 36FT CROSS AUGER

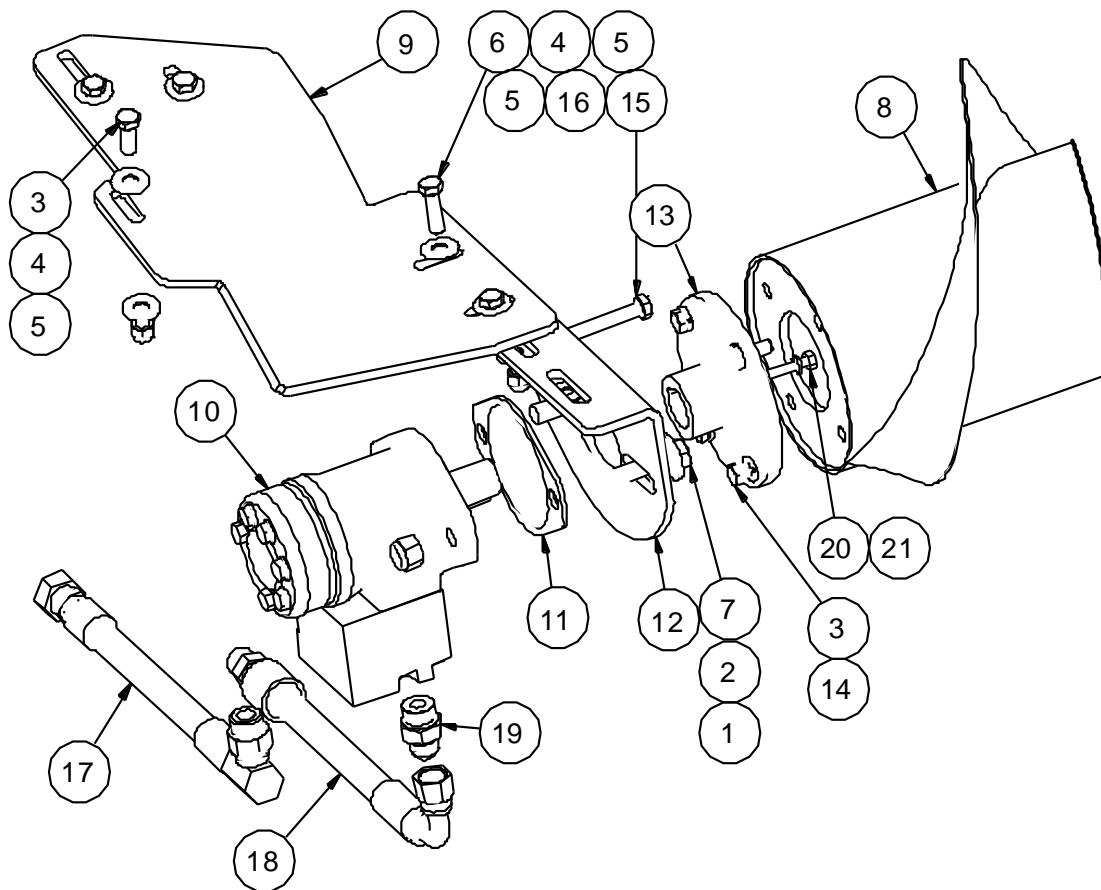


Overview CASE 1042
36FT Cross Auger
Kit #405826
(see Cross Auger parts section 6
for further details)

ITEM	QTY	PART NUMBER	ITEM	QTY	PART NUMBER
1	1	405726 flap bolt on wldt 3in LH	13	1	408137 MacDon 972 mtr mt plate RH dirdrv
2	1	405725 flap bolt on wldt 3in RH	14	1	117170 motor with flow control 5.9 danfoss
3	4	100702 bolt 1-2 X 1 1-2 gr5 pltd nc	15	1	407271 shim hyd motor mt AGCO 9250
4	2	100966 Carriage Bolt 1-4 X 3-4 NC	16	1	408111 hyd motor mt macdon dirdrv
5	10	100602 bolt 3-8 X 1 gr5 pltd nc	17	1	100610 bolt 3-8 X 3 gr5 pltd nc
6	1	405087 plastic guard	18	1	406389 MD973 36ft Bearing Support Plate LH
7	4	100948 carriage bolt 1-2 X 1 1-4 NC	19	1	118816 hose assy 1_2 x 54 lg 10 male ORB 90 x 08 FJIC
8	3	114471 Pillow Block Bearing Assy P207-SA207	20	1	118825 Hyd hose 08 x 40 x 08FJICS90 x 08MJIC
9	1	406385 MD973 36ft Center Bearing Mnt Wldmt	21	1	117984 ADAPTER STR 10MORB X 08 MJIC
10	1	408215 1042 case 962m 36ft Auger Wldmt RH dirdrv	22	6	100965 carriage bolt 5/8" X 2-1/4" nc
11	1	407047 1042 case 963m 36ft Auger Wldmt LH			
12	2	407050 1042case 963m 36ft Center Mount Adapter Plate			

6.2. RIGHT HAND END MOUNT CASE 1042 36 FOOT

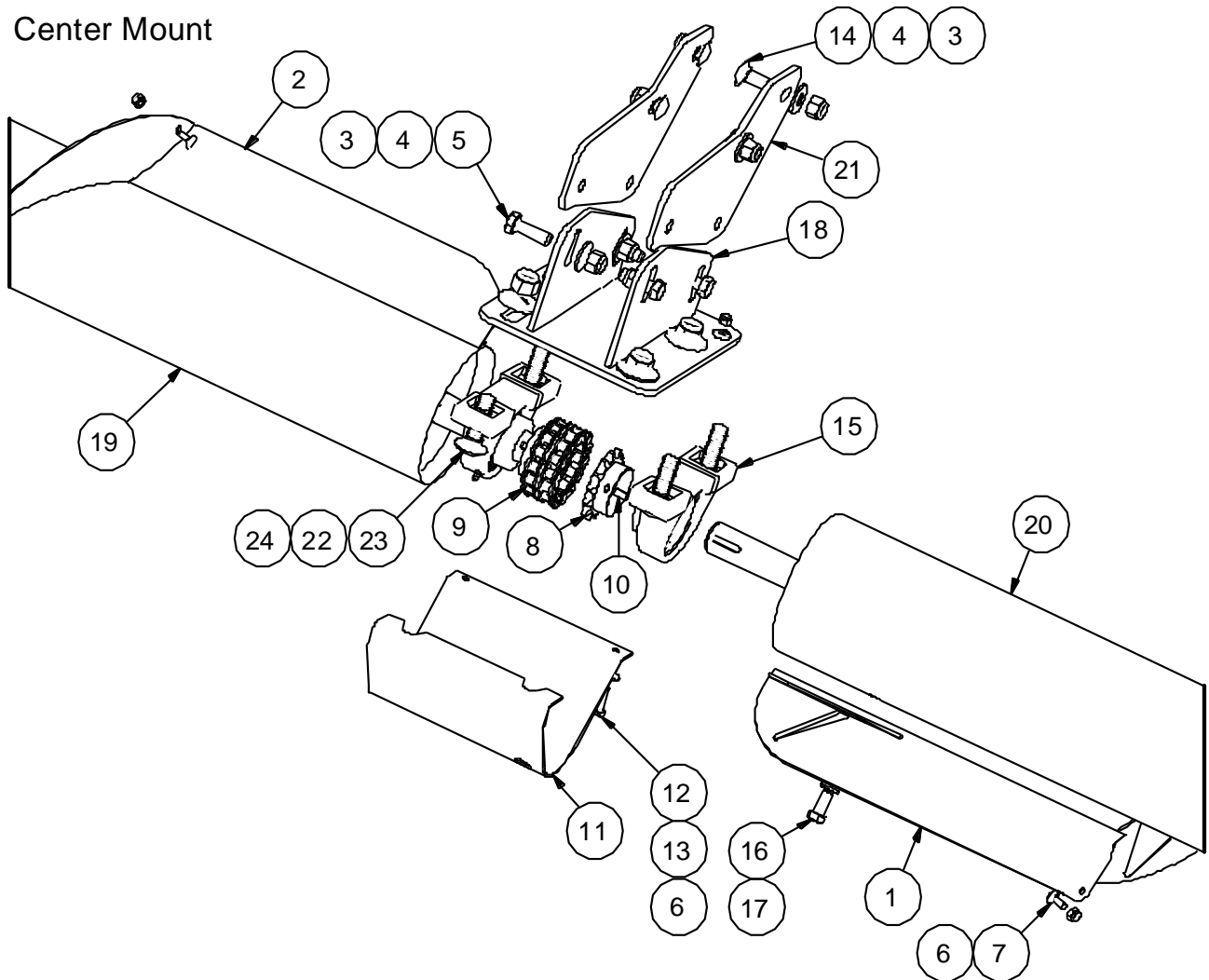
Right End Mount and Drive



ITEM	QTY	PART NUMBER	ITEM	QTY	PART NUMBER
1	10	102125 nut nylok 1/2" nc gr5 pltd	12	1	408111 hyd motor mt macdon dirdrv
2	10	101106 flat washer 1/2"	13	1	407105 direct drive motor adapter wldt
3	10	100602 bolt 3-8 X 1 gr5 pltd nc	14	4	101145 lock washer 3/8"
4	16	101105 flat washer 3/8"	15	1	100610 bolt 3-8 X 3 gr5 pltd nc
5	9	102123 nut nylok 3/8" nc gr5 pltd	16	1	102131 nut jam 3-8 nc gr5 1-2 HGT
6	2	100603 bolt 3-8 X 1 1-4 gr5 pltd nc	17	1	118816 hose assy 1_2 x 54 lg 10 male ORB 90 x 08 FJIC
7	2	100703 bolt 1-2 X 2 gr5 pltd nc	18	1	118825 Hyd hose 08 x 40 x 08FJICS90 x 08MJIC
8	1	408215 1042 Case 962m 36ft Auger Wldmt RH dirdrv	19	1	117984 ADAPTER STR 10MORB X 08 MJIC
9	1	408137 MacDon 972 mtr mt plate RH dirdrv	20	1	100404 HEX HD BOLTS 1-4 NC X 1 1-4
10	1	117170 motor with flow control 5.9 danfoss	21	1	101144 washer lock 1/4
11	1	407271 shim hyd motor mt AGCO 9250			

6.3. CENTER MOUNT CASE 1042 36 FOOT

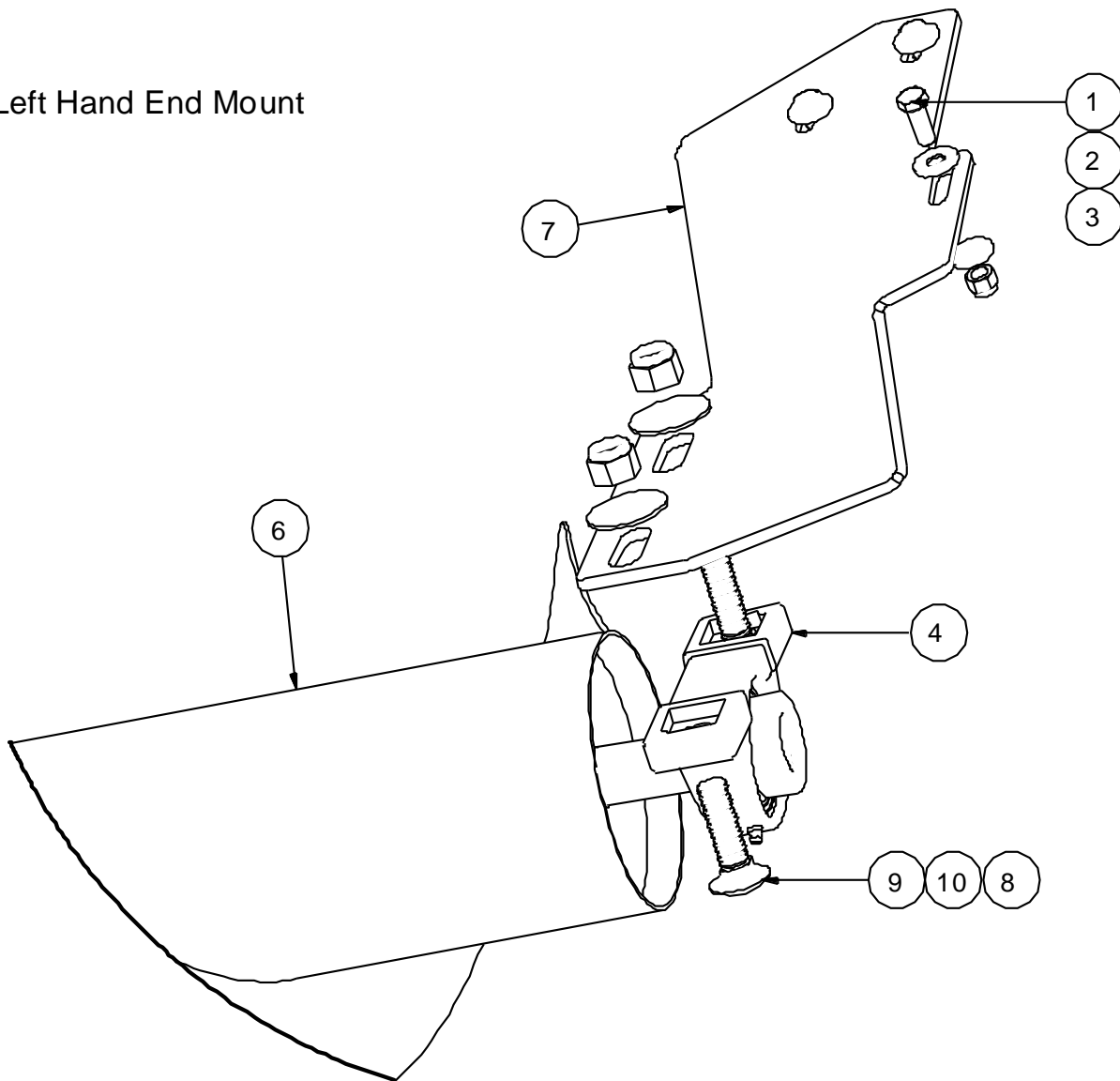
Center Mount



ITEM	QTY	PART NUMBER	ITEM	QTY	PART NUMBER
1	1	405726 flap bolt on wldt 3in LH	15	3	114471 Pillow Block Bearing Assy P207-SA207
2	1	405725 flap bolt on wldt 3in RH	16	2	100660 bolt 7-16 X 1 gr5 pltd nc
3	10	102125 nut nylok 1/2" nc gr5 pltd	17	2	101142 lock washer 7-16
4	10	101106 flat washer 1/2"	18	1	406385 MD973 36ft Center Bearing Mnt Wldmt
5	4	100702 bolt 1-2 X 1 1-2 gr5 pltd nc	19	1	408215 1042 case 962m 36ft Auger Wldmt RH dirdrv
6	4	102121 nut nylok 1/4" nc gr5 pltd	20	1	407047 1042 case 963m 36ft Auger Wldmt LH
7	2	100966 Carriage Bolt 1-4 X 1 3-4 NC	21	2	407050 1042case 963m 36ft Center Mount Adapter Plate
8	2	114468 chain coupler 1-1/4" ID	22	6	102127 nut 5/8 nc nylock
9	1	114469 Coupler chain 2R No50:1	23	6	100965 carriage bolt 5/8" X 2-1/4" nc
10	2	405361 key 1/4" x 1/4" x 1"	24	6	101107 washer flat 5/8"
11	1	405087 plastic guard			
12	2	100403 bolt 1-4 X 1 gr5 pltd nc			
13	4	101103 flat washer 1/4"			
14	4	100948 carriage bolt 1-2 X 1 1-4 NC			

6.4. LEFT END MOUNT CASE 1042 36 FOOT

Left Hand End Mount



ITEM	QTY	PART NUMBER	ITEM	QTY	PART NUMBER
1	10	100602 bolt 3-8 X 1 gr5 pltd nc	6	1	407047 1042 case 963m 36ft Auger Widmt LH
2	16	101105 flat washer 3/8"	7	1	406389 MD973 36ft Bearing Support Plate LH
3	9	102123 nut nylok 3/8" nc gr5 pltd	8	6	102127 nut 5/8 nc nylock
4	3	114471 Pillow Block Bearing Assy P207-SA207	9	6	100965 carriage bolt 5/8" X 2-1/4" nc
5	2	100703 bolt 1-2 X 2 gr5 pltd nc	10	6	101107 washer flat 5/8"

7. WARRANTY

1. Ag Shield Manufacturing warrants each new Ag Shield cross auger over to be free from factory defects in material and workmanship under normal use and service, when set up and operated in accordance with factory instructions for one year from the date of delivery to the original purchaser.
2. Ag Shield's obligation under this warranty is limited to the supplying of replacement parts which are defective due to factory workmanship or material.
3. Your Ag Shield Dealer is responsible for providing warranty labour. Credit for required labour is specifically agreed to on an individual case basis.
4. The warranty is void on any unit which has been tampered with, or modified in any way not authorized in writing by the factory.
5. This warranty is void on any unit which is subject to misuse, negligence or accident, or which has had the serial number tampered or removed.
6. A "Warranty Claim Form" (sample at end of handbook) must be submitted to Ag Shield with returned parts in order for parts to be considered for warranty examination.
7. A warranty registration page from the front of this manual must be returned to the factory in order to qualify for warranty examination.
8. All returned parts must be sent to the factory freight prepaid, and warranty parts will be returned to you freight collect.
9. Replacement parts shipped pending receipt of parts for examination will be invoiced, and remain on your account until such time as examination indicates that a credit for those parts be issued or that payment is due.
10. Parts not returned for warranty examination within 30 days must be paid for at that time. Ag Shield will immediately reimburse any cash paid for items that are later determined defective.
11. Warranty terms and conditions are subject to provincial and state legislation.

WARRANTY CLAIM FORM

Ag Shield Mfg
 Box 9, Benito,
 MB, R0L 0C0
 ph 800-561-0132
 fax 204-539-2130
 ph 204-539-2000i

Dealer		
Address		
City	State/Province	Zip/Postal

End User		
Address		
City	State/Province	

DATE OF SALE	DATE FAILED	REPAIR DATE	ACRES/HOURS	MODEL	SERIAL NUMBER
--------------	-------------	-------------	-------------	-------	---------------

LABOUR HOURS	LABOUR RATE	LABOUR AMOUNT	PARTS MUST BE RETURNED TO BENITO MB FREIGHT PREPAID TO BE CONSIDERED FOR WARRANTY. DATE SHIPPED		
--------------	-------------	---------------	---	--	--

QUANTITY ITEM	PART NUMBER	DESCRIPTION	PRICE EACH	TOTAL PRICE	DESCRIBE THE CAUSE OF FAILURE AND CORRECTIVE ACTION TAKEN	APPROVE /REJECT
1						
2						
3						
4						
5						
6						
7						
8						

I CERTIFY THAT THE INFORMATION IS ACCURATE AND THAT THE PARTS WERE REPLACED ON THE MACHINE	PARTS	DATE PARTS RECD	RECD BY
	LABOUR	ITEMS TO SUPPLIERS	
	TOTAL		

SHADED AREAS AG SHIELD USE ONLY ---PLEASE ADD DETAILS FOR ITEM NUMBERS ON BACK

