

AG SHIELD



**12" Cross Auger for JD 925D(ASM part # 405842);
930D (ASM part # 405843), and;
936D (ASM part # 405844) Headers**

OPERATOR'S HANDBOOK AND PARTS MANUAL

**Ag Shield Manufacturing
Box 9, Benito, Manitoba R0L 0C0
Phone 800-561-0132 or 204-539-2000
Fax 204-539-2130
Email address: sales@agshield.com
Web site at <http://www.agshield.com>**

Printed in Canada

- 12/09/17

REV 4

-Part No 405902

1 TABLE OF CONTENTS

1	TABLE OF CONTENTS	3
2	INTRODUCTION AND SIGN-OFF FORM	4
3	SAFETY	5
3.1	SAFETY OVERVIEW	6
3.2	GENERAL SAFETY	6
3.3	MAINTENANCE SAFETY	7
3.4	HYDRAULIC SAFETY	7
3.5	STORAGE SAFETY	7
3.6	TRANSPORT SAFETY	7
3.7	REFUELING SAFETY	8
3.8	TIRE SAFETY	8
3.9	OPERATING SAFETY	8
3.10	CROSS AUGER SAFETY	8
3.11	SAFETY DECALS	9
4	INSTALLATION JD 925-930-936 ALL MODELS	10
4.1	PADDLE INSTALLATION	24
4.2	STRIPPER BAR INSTALLATION	25
5	OPERATIONS	26
5.1	FIELD SETTING THE CROSS AUGER	26
6	PARTS	27
6.1	JD 925 CROSS AUGER PARTS OVERVIEW	27
6.1	405844 JD936D CROSS AUGER	28
6.2	405843 JD930D CROSS AUGER	29
6.3	CENTER MOUNT DETAILS ALL MODELS	30
6.4	RH MOTOR DETAIL FOR JD9XX SERIES AUGERS	31
6.5	LH END PLATE DETAIL FOR JD9XX SERIES AUGERS	32
7	WARRANTY	33

3 SAFETY

SAFETY ALERT SYMBOL

This Safety Alert symbol means:
ATTENTION! BECOME ALERT!
YOUR SAFETY IS INVOLVED!

The Safety Alert symbol identifies important safety messages on the Ag Shield Cross auger and in the manual. When you see this symbol, be alert to the possibility of personal injury or death. Follow the instructions in the safety message.



3 Big Reasons

Accidents Disable and Kill
Accidents Cost
Accidents Can Be Avoided

SIGNAL WORDS:

Note the use of the signal words **DANGER**, **WARNING** and **CAUTION** with the safety messages. The appropriate signal word for each message has been selected using the following guide-lines:

DANGER An immediate and specific hazard which **WILL** result in severe personal injury or death if the proper precautions are not taken.

WARNING Specific hazard or unsafe practice which **COULD** result in severe personal injury or death if proper precautions are not taken.

CAUTION Unsafe practices which **COULD** result in personal injury if proper practices are not taken, or as a reminder of good safety practices.

3.1 SAFETY OVERVIEW

YOU are responsible for the **SAFE** operation and maintenance of your Ag Shield cross auger. **YOU** must ensure that you and anyone else who is going to operate, maintain or work around the cross auger be familiar with the operating and maintenance procedures and related **SAFETY** information contained in this manual. This manual will take you step-by-step through your working day and alerts you to all good safety practices that should be adhered to while operating the cross auger.

Remember, **YOU** are the key to safety. Good safety practices not only protect you but also the people around you. Make these practices a working part of your safety program. Be certain that **EVERYONE** operating this equipment is familiar with the recommended operating and maintenance procedures and follows all the safety precautions. Most accidents can be prevented. Do not risk injury or death by ignoring good safety practices.

- Cross auger owners must give operating instructions to operators or employees before allowing them to operate the cross auger, and at least annually thereafter per OSHA regulation 1928.57.
- The most important safety device on this equipment is a **SAFE** operator. It is the operator's responsibility to read and understand **ALL** Safety and Operating instructions in the manual and to follow these. All accidents can be avoided.
- A person who has not read and understood all operating and safety instructions is not qualified to operate the machine. An untrained operator exposes himself and bystanders to possible serious injury or death.
- Do not modify the equipment in any way. Unauthorized modification may impair the function and/or safety and could affect the life of the equipment.
- Think **SAFETY!** Work **SAFELY!**

3.2 GENERAL SAFETY

1. Read and understand the Operator's Manual and all safety signs before operating, maintaining, adjusting the Cross auger.



2. Only trained competent persons shall operate the auger. An untrained operator is not qualified to operate the machine.

3. Have a first-aid kit available for use should the need arise and know how to use it.

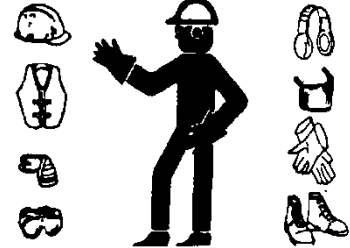


4. Have a fire extinguisher available for use should the need arise and know how to use it.



5. Do not allow riders.

6. Wear the appropriate protective gear. This list includes but is not limited to:



- A hard hat
- Protective shoes with slip resistant soles
- Protective glasses or goggles
- Heavy gloves
- Hearing protection

7. Stop the engine, place all controls in neutral, set park brake, remove ignition key and wait for all moving parts to stop before servicing, adjusting, repairing or unplugging.
8. Review safety related items with all personnel annually.

3.3 MAINTENANCE SAFETY

1. Review the Operators Manual and all safety items before working with, maintaining or operating the Cross auger.
2. Stop the tractor engine, place all controls in neutral, set park brake, remove ignition key, wait for all moving pads to stop before servicing, adjusting, or repairing.
3. Before applying pressure to a hydraulic system, make sure all components are tight and that steel lines, hoses and couplings are not damaged.
4. Relieve pressure from hydraulic circuit before servicing or disconnecting from tractor.
5. Keep hands, feet, clothing and hair away from all moving and/or rotating parts.
6. Clear the area of bystanders, especially children, when carrying out any maintenance and repairs or making any adjustments.
7. Place stands or blocks under the frame before working beneath the machine.

3.4 HYDRAULIC SAFETY

1. Always place all tractor hydraulic controls in neutral before dismounting.
2. Make sure that all components in the hydraulic system are kept in good condition and are clean.
3. Replace any worn, cut, abraded, flattened or crimped hoses and steel lines.
4. Do not attempt any makeshift repairs to the hydraulic lines, fittings or hoses by using tape, clamps or cements. The hydraulic system operates under extremely high-pressure. Such repairs will fail suddenly and create a hazardous and unsafe condition.
5. Wear proper hand and eye protection when searching for a high-pressure hydraulic leak. Use a piece of wood or cardboard as a backstop instead of hands to isolate and identify a leak.
6. If injured by a concentrated high-pressure stream of hydraulic fluid, seek medical attention immediately. Serious infection or toxic reaction can develop from hydraulic fluid piercing the skin surface.

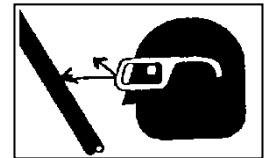
7. Before applying pressure to hydraulic system make sure that all connections are tight and that all hoses and fittings are in good condition.

3.5 STORAGE SAFETY

1. Store unit in an area away from human activity.
2. Do not permit children to play on or around the stored Cross auger.

3.6 TRANSPORT SAFETY

1. Read and understand ALL the information in the Operator's Manual regarding procedures and SAFETY when operating the Cross auger in the field and/or on the road.
2. Check with local authorities regarding machinery transport on public roads. Obey all applicable laws and regulations.
3. Always travel at a safe speed. Use caution when making corners or meeting traffic.



4. Make sure the SMV (Slow Moving Vehicle) emblem and all the lights and reflectors that are required by the local highway and transport authorities are in place, are clean and can be seen clearly by all overtaking and oncoming traffic. Daybreak and dusk are particularly dangerous and pilot vehicles are recommended.
5. Ensure that the trailer is hitched positively to the towing vehicle. Always use a safety chain between the trailer and the tractor.
6. Keep to the right and yield the right-of-way to allow faster traffic to pass. Drive on the road shoulder, if permitted by law.
7. Always use hazard warning flashers on the Cross auger when transporting unless prohibited by law.

3.7 REFUELING SAFETY

1. Handle fuel with care. It is highly flammable.



2. Do not refuel the machine while smoking or when near open flame or sparks.

3. Stop engine before refueling.

Clean up spilled fuel before restarting engine.

3.8 TIRE SAFETY

1. Failure to follow proper procedures when mounting a tire on a wheel or rim can produce an explosion, which may result in serious injury or death.
2. Do not attempt to mount a tire unless you have the proper equipment and experience to do the job.
3. Have a qualified tire dealer or repair service perform required tire maintenance.
4. Operate the tires at the pressures, loads, and speeds suggested by the manufacturer.

3.9 OPERATING SAFETY

1. Read and understand the Operator's Manual and all safety signs before using.
2. Stop engine place all controls in neutral, set park brake, remove ignition key, wait for all moving parts to stop before servicing, adjusting, repairing or unplugging.
3. Before conditioning a field, be familiar with all potential hazards: trees, rocks ditches, gullies, etc. Plan your route to avoid hazards. Keep Cross auger width in mind when maneuvering to avoid obstacles.
4. Keep hands, feet, hair and clothing away from all moving and/or rotating parts.
5. Keep all shields and guards in place when operating.
6. Do not allow riders on the Cross auger or tractor during operation or transporting.
7. Clear the area of all bystanders, especially children, before starting.
8. Stay away from machine when folding deflectors. Keep others away.

9. Before applying pressure to the hydraulic system, make sure all components are tight and that steel lines, hoses and couplings are not damaged.

10. Review safety instructions annually

3.10 CROSS AUGER SAFETY

The cross auger has sufficient power to sever limbs and cause serious to fatal injury. Always stop the cross auger before dismounting. Always be certain that no one is in front of combine header Shield before engaging the auger drive.

When greasing the auger, do so with the combine motor shut off and the park brake securely set.

Never attempt to help the crop move along the canvases with a wrench or other item that might get into the auger and draw the wrench holder into the auger.

3.11 SAFETY DECALS

Become familiar with these decals and the hazards they are marking.



part #113522



4 Installation JD 925-930-936 all models

Figure 1 Installed and running	11
Figure 2 Installed Cross Auger	12
Figure 3 Center Mount for JD9xx series auger with guard cover assembled	13
Figure 4 Center mount 9XX series auger showing coupling and cover	14
Figure 5 Center mount front view	15
Figure 6 motor drive installed on auger	16
Figure 7 Inner end of auger with sprockets and bearing installed before hanging	17
Figure 8 Hydraulic Motor on direct drive with blue mount and Stop Bolt in on and off (red) positions	18
Figure 9 left end mount all models	19
Figure 10 Inner end of LH auger with bearing and sprocket installed	21
Figure 11 LH end Mount installed on top of header angle	20
Figure 12 Install the center link to chain coupler with one side bent out of way.	22
Figure 13 JD 6XX Right hand hydraulic motor drive	23
Figure 14 Sauer Motor with speed control	26

See Section 6 for parts break down



FIGURE 1 INSTALLED AND RUNNING

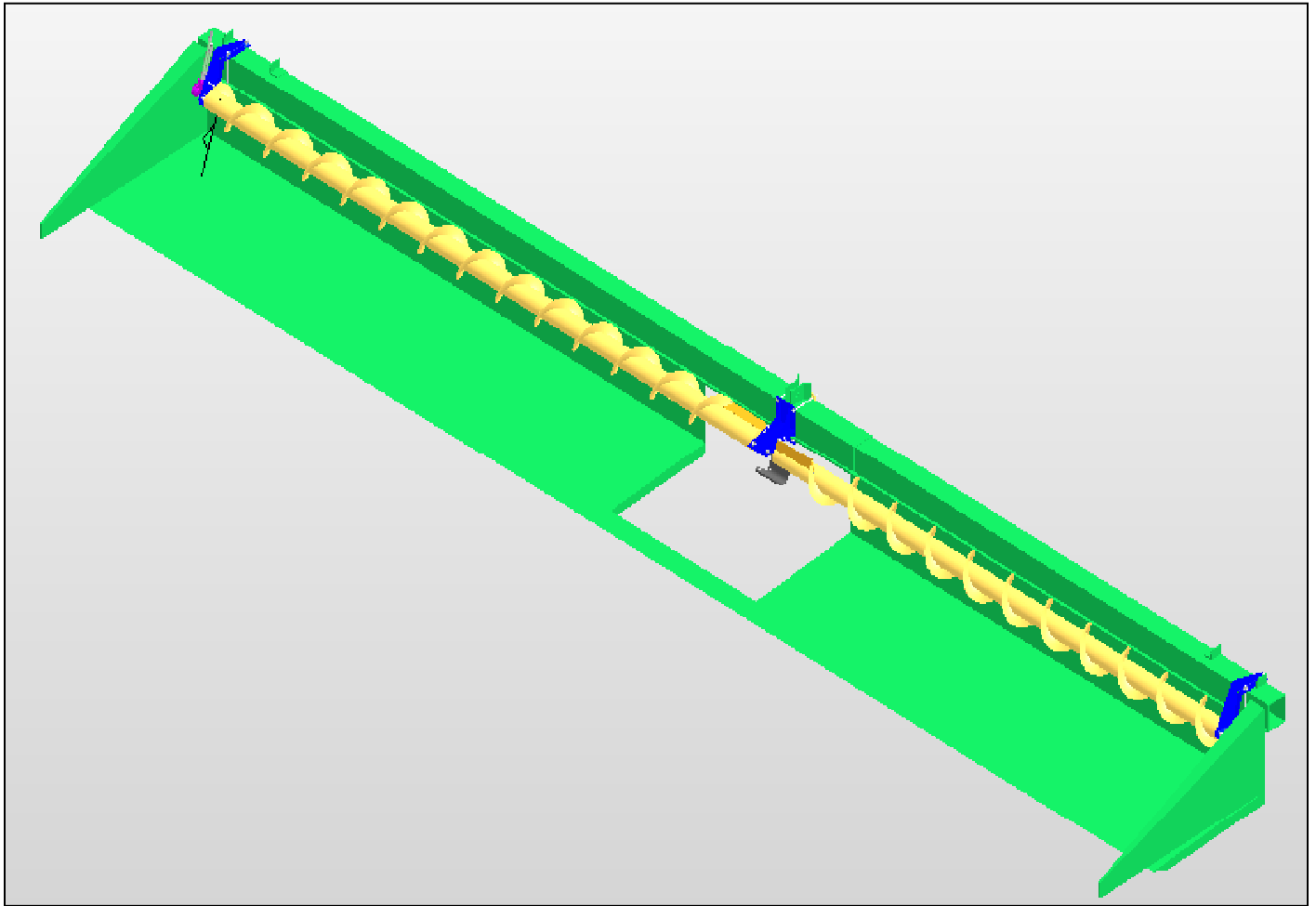


FIGURE 2 INSTALLED CROSS AUGER

1. Locate and install the center mount, See photos below, and parts page section 6.

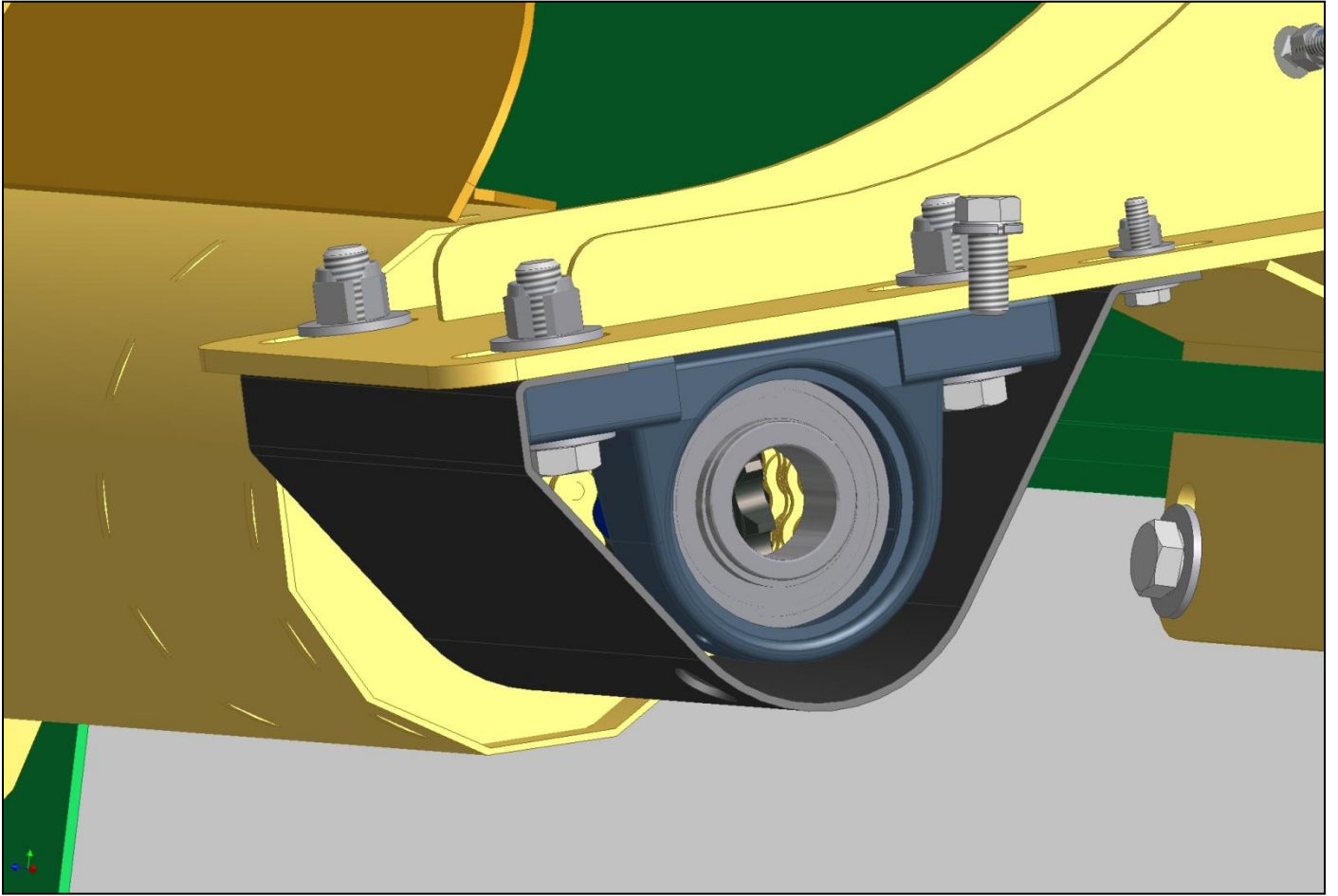


FIGURE 3 CENTER MOUNT FOR JD9XX SERIES AUGER WITH GUARD COVER ASSEMBLED

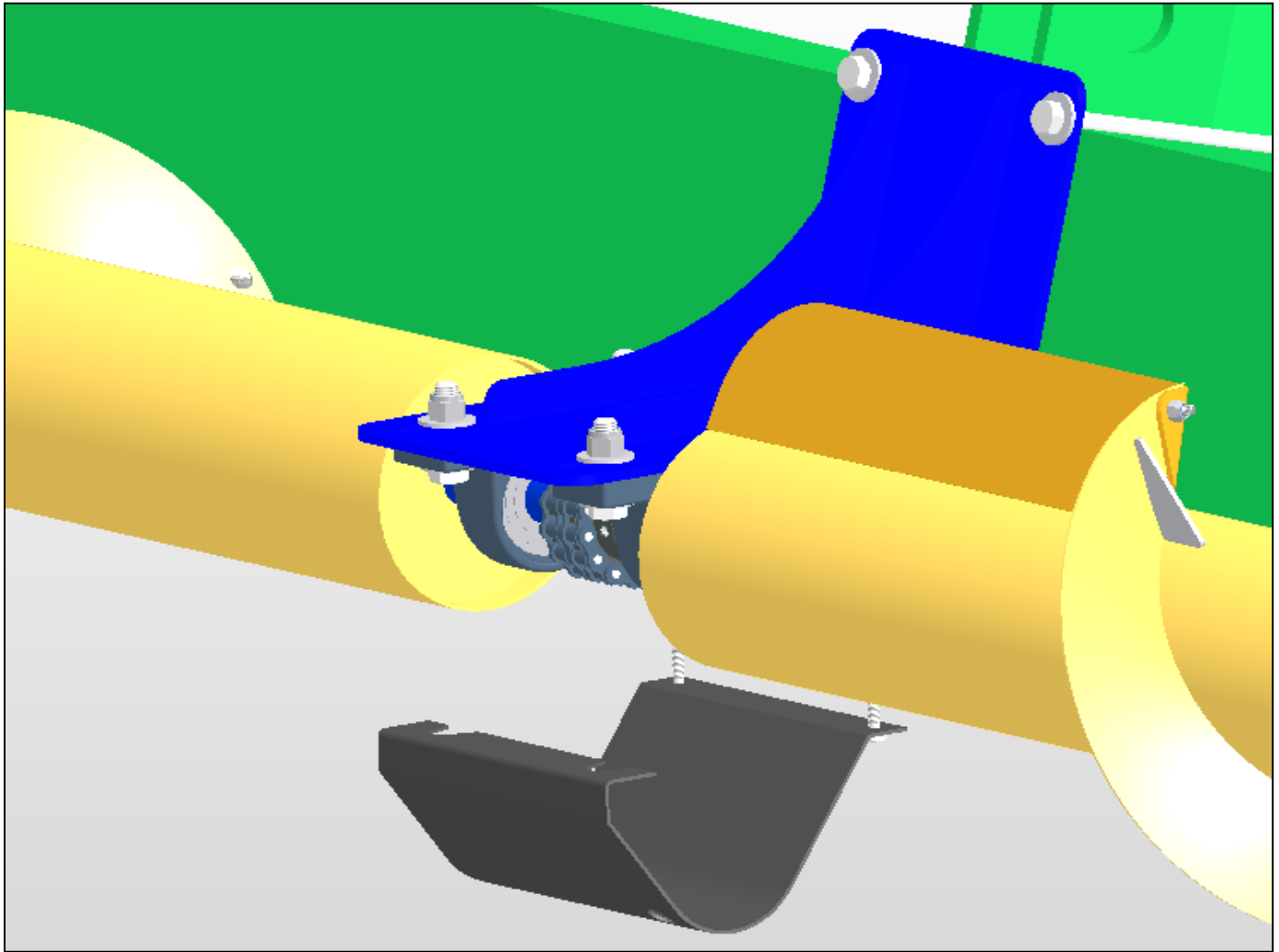


FIGURE 4 CENTER MOUNT 9XX SERIES AUGER SHOWING COUPLING AND COVER



FIGURE 5 CENTER MOUNT FRONT VIEW

2. Locate the right hand auger, install the motor, shim , direct drive on the right hand end, install the bearing and sprockets on the paddle end,

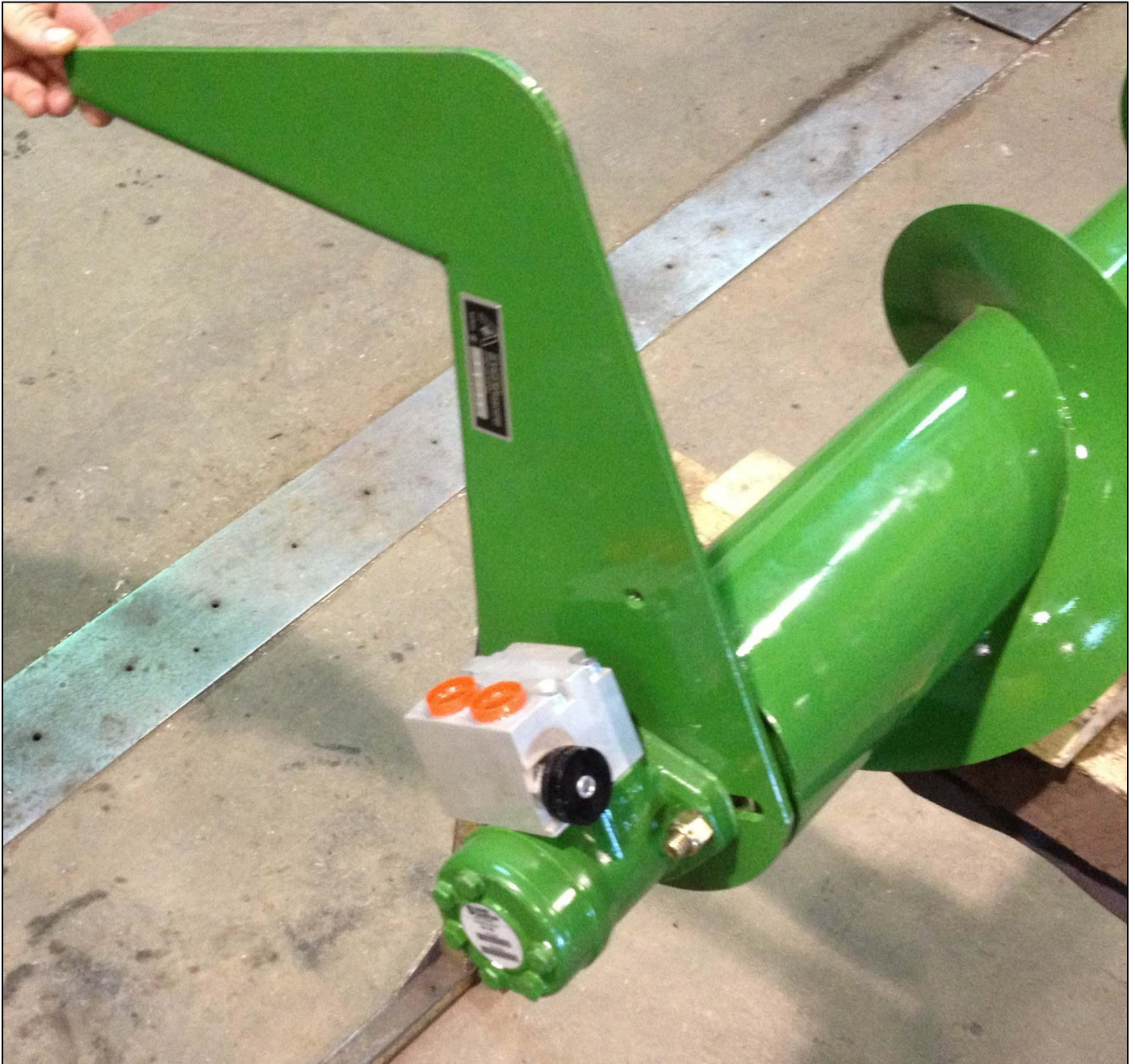


FIGURE 6 MOTOR DRIVE INSTALLED ON AUGER

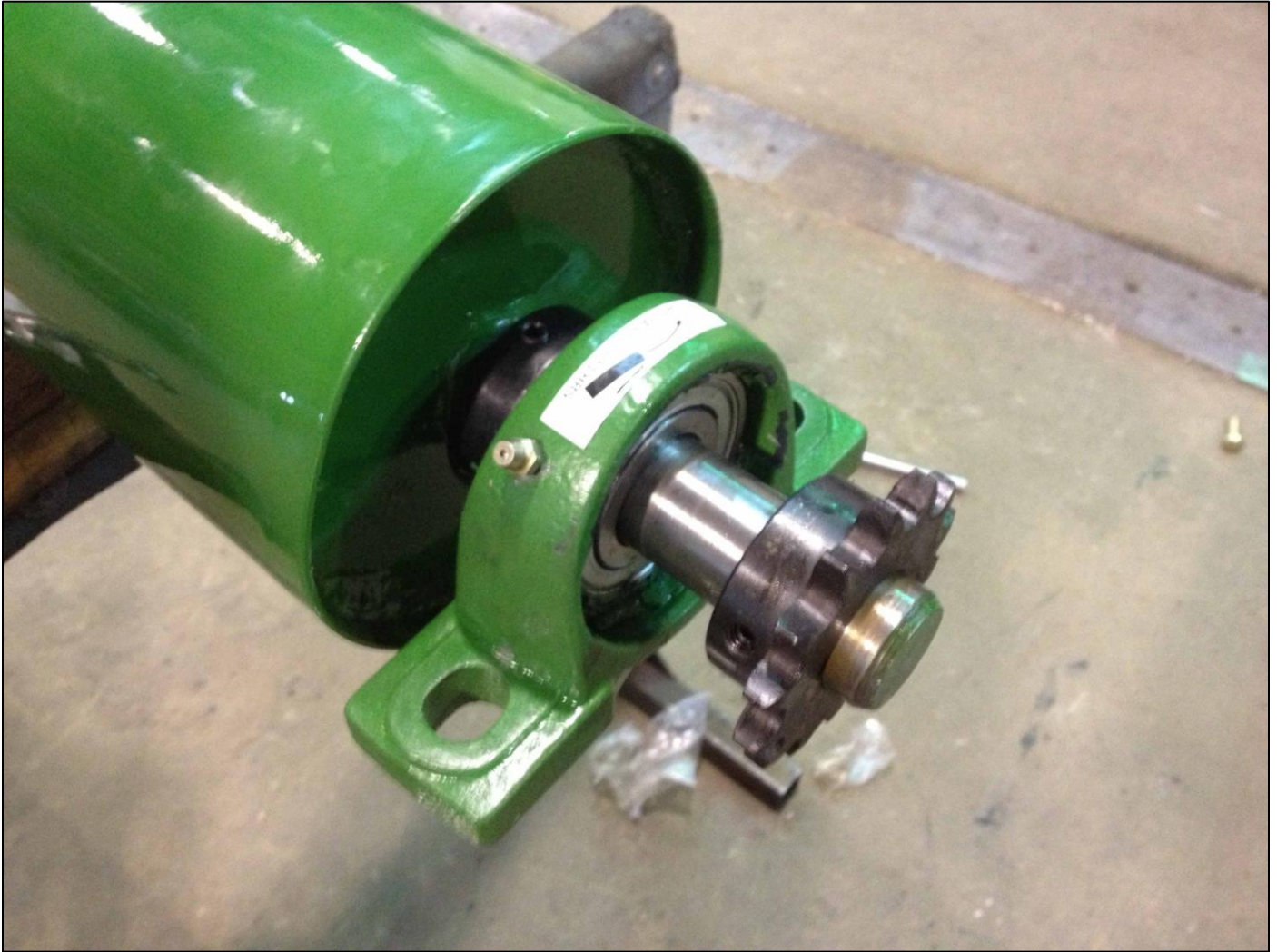


FIGURE 7 INNER END OF AUGER WITH SPROCKETS AND BEARING INSTALLED BEFORE HANGING

4. Lift right auger into place with a strap and loader, and U clamp loosely into place- the motor should be about 1.5 inches from the end of the header.
5. Rotate the auger, adjust so that there is less than $\frac{1}{4}$ " clearance between the auger flighting and the rear plate of header. The rear plate of the header acts as the stripper to prevent crop from wrapping on the auger.

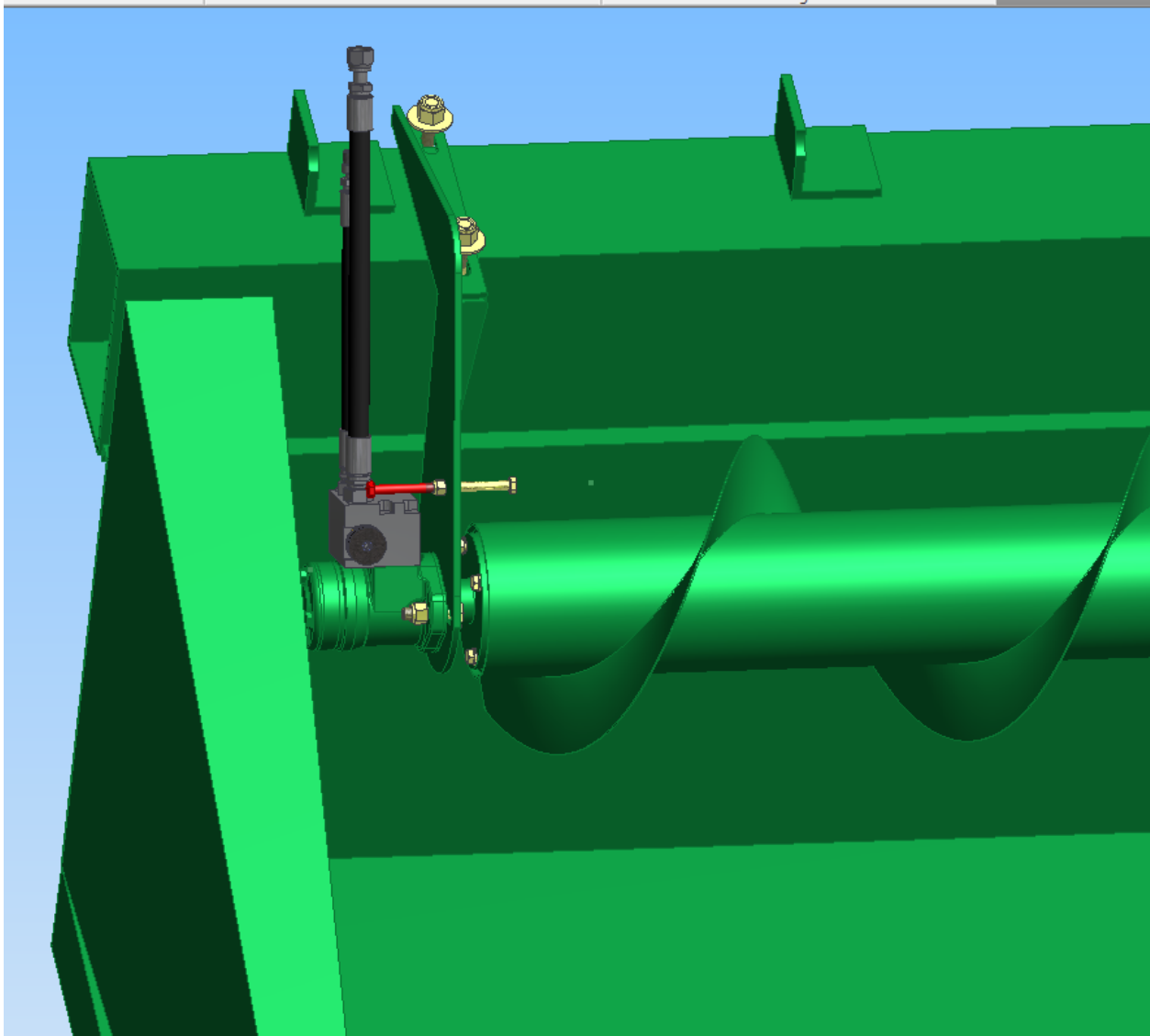


FIGURE 8 HYDRAULIC MOTOR ON DIRECT DRIVE WITH MOUNT AND STOP BOLT IN ON AND OFF (RED) POSITIONS

Note the **RED stop bolt** is used to completely stop the auger from turning IF you have a reason. The normal position is to have the **stop bolt** stored on the motor side of the blue mounting bracket as shown. This **stop bolt** may never be used by most operators, but is supplied in case there are special conditions where it might be required.

To use the **stop bolt**: Install the bolt into the path of the rotating auger as show, then completely open the bypass adjusting valve so that excessive back pressure is not built up in the canvas circuit.

6. Assemble together the left hand auger bearings, sprockets, and outer mount.

Note the spacer lug welded onto the bottom of the left hand mount where it contacts the frame., the Right Hand mount does not have this lug



FIGURE 9 LEFT END MOUNT ALL MODELS

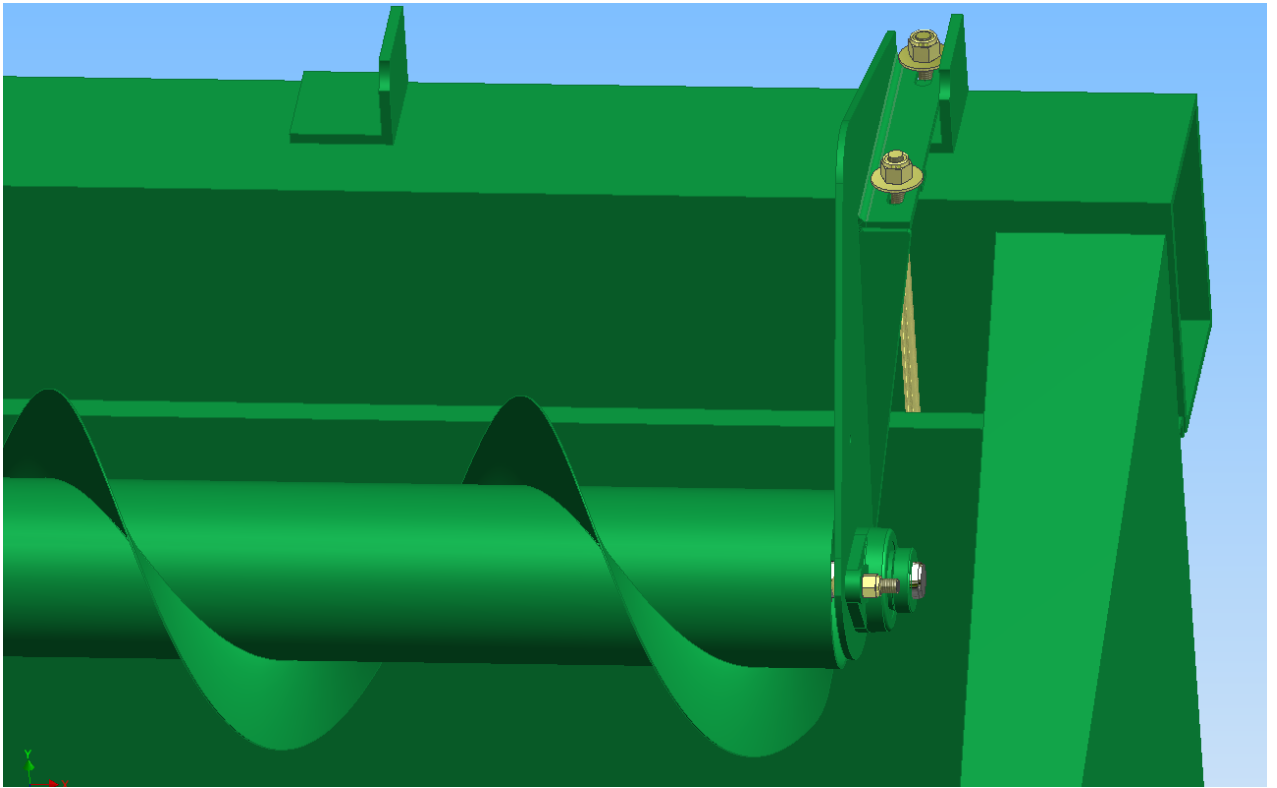


FIGURE 10 LH END MOUNT INSTALLED ON TOP OF HEADER ANGLE

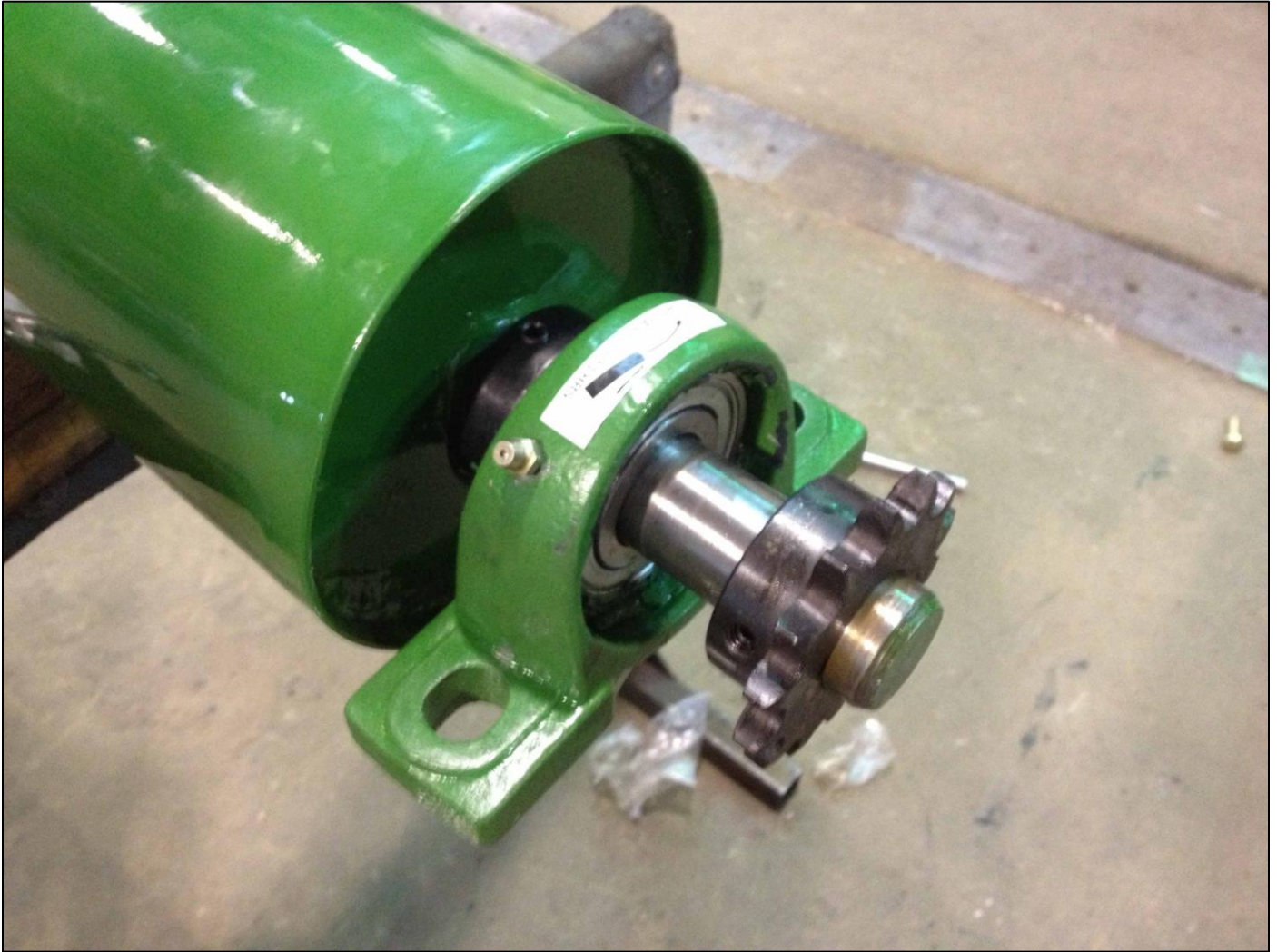


FIGURE 11 INNER END OF LH AUGER WITH BEARING AND SPROCKET INSTALLED

7. Hang up the left hand auger, align, Rotate the auger, check that there is clearance between the auger flighting and the rear plate of header. Slide the bearings along the slots to have $\frac{1}{4}$ " clearance.
8. Join the 2 augers with the chain coupler.

Observe that the right auger is $\frac{1}{4}$ inch from the frame to the flighting, BUT ALSO lined up to have the chain coupler easily wrapped around the 2 sprockets. Snug both center bearings before installing chain coupler.

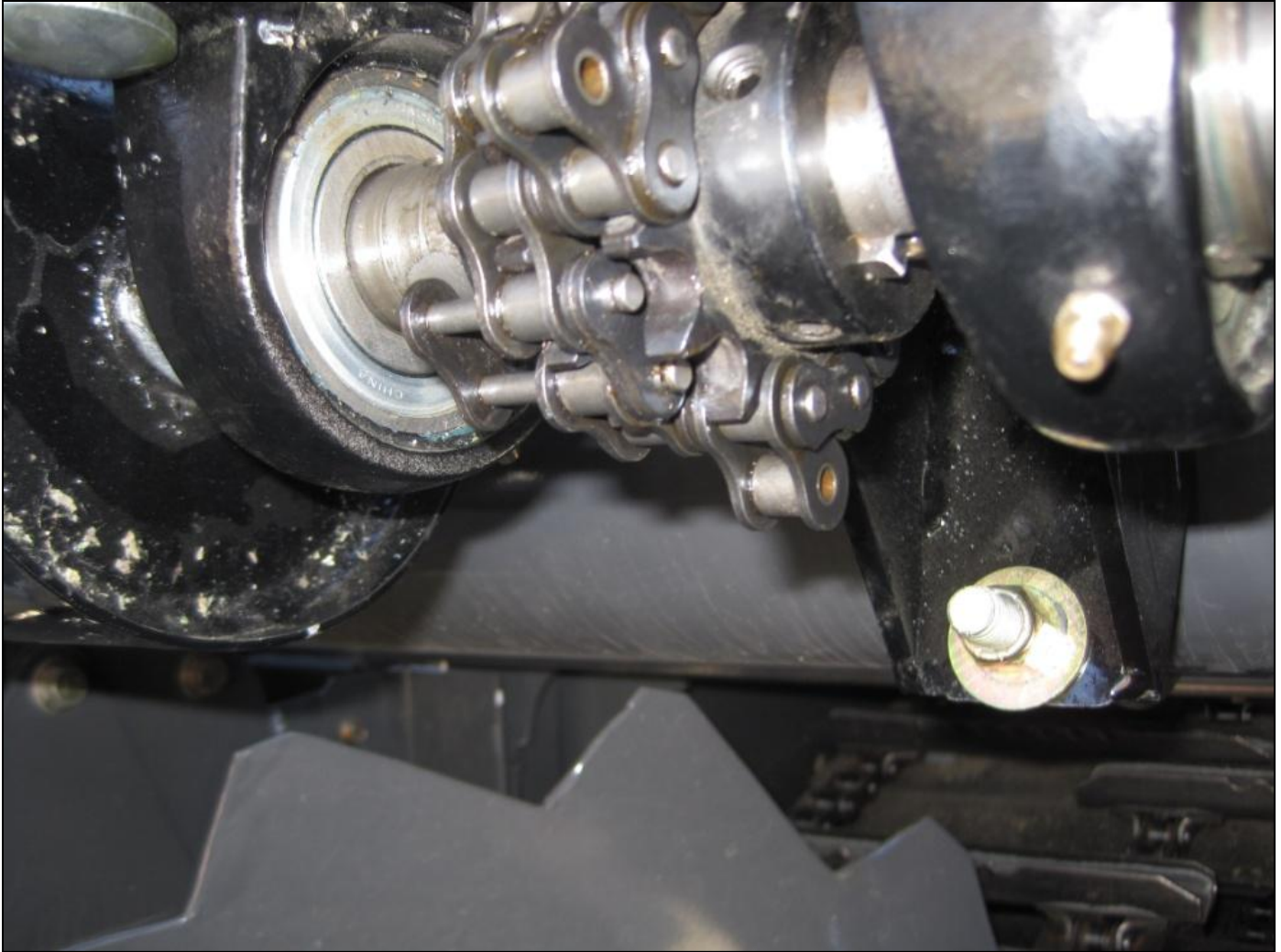


Figure 12 Install the center link to chain **coupler with one side bent out of way.**

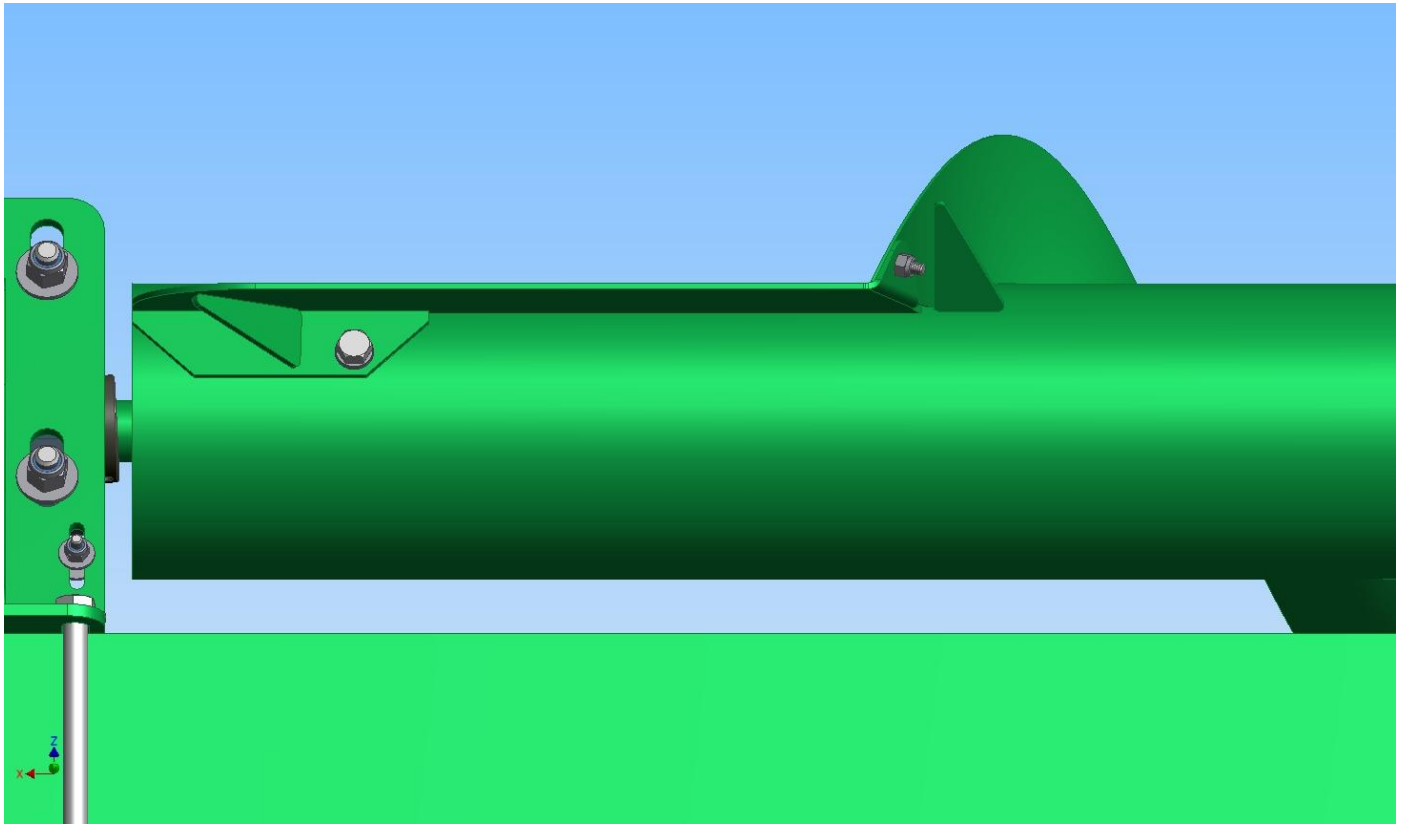
9. Install the center black plastic cover over center bearings. Install hydraulic hoses as per Figure 13 JD 9XX Right hand hydraulic motor drive and Figure 14 Sauer Motor with speed control. The longer hose #118823 (D), the pressure line, from the E port of the canvas motor port to the forward or B port of the Ag Shield motor. The oil will take the long way around the Ag Shield motor- return out port A via hose 118824 (F), the short return hose that connects to the former canvas motor return hose at C.



FIGURE 13 JD 9XX RIGHT HAND HYDRAULIC MOTOR DRIVE

Remove the RH hose from the Canvas Motor on the back of the header on the RH canvas motor.
Route pressure hose from Ag Shield auger motor PORT B to the RH PORT on the canvas motor.
Route return hose from Ag Shield auger motor to PORT A to the hose that was removed from the canvas motor.

4.1 PADDLE INSTALLATION



Paddles bolt onto the auger at the center end of the auger. There will be a hole in the auger with a 7/16 threaded nut. Using the 7/16 bolt and Lock washer, mount the paddle to the auger tube. On the flighting there will be a small hole drilled into the flighting. Using the 1/4" carriage head bolt and nylock nut, attach the paddle to the flighting.

4.2 STRIPPER BAR INSTALLATION

- 1) All Ag Shield augers now come with a stripper bar to help prevent crop from wrapping on the auger, as well as to provide a cleaner transfer of crop to the center of the header.
- 2) Put the stripper bar on last after the auger has been installed and tested. This will ensure the height of the auger does not change after the stripper bar height has been set.



Hold stripper bar up to the back board and mark the holes in the middle of the slot (every second hole will be fine)

A magnet will help hold one end if installing alone.

Make sure before drilling that the drill will not damage anything behind the back board (hyd fittings hoses etc)

Drill 3/8" holes in the middle of the slot in the back board.

Set the stripper bar to be 1/4" below the flighting.

Tighten the stripper bar to the back board.

On a 930D header place a long piece on each side of the feeder opening, then cut the small piece in half and mount one on each end of the long pieces.

On a 936D put a long piece on each side, on the longer side add a short piece, then trim the second short piece to fit and add the extra to the short side.

5 OPERATIONS



DANGER

Stay clear of auger
whenever it is running

5.1 FIELD SETTING THE CROSS AUGER

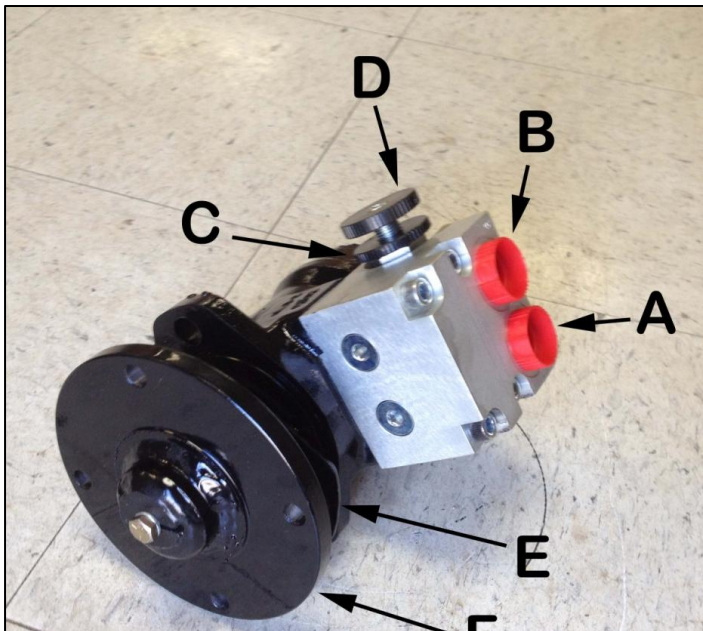


FIGURE 14 SAUER MOTOR WITH SPEED CONTROL

- A: Return or tank line
- B: Pressure line
- C: Lock wheel
- D: Auger speed adjustment
- E: Shim for hydraulic motor mount
- F: Direct driver motor adapter

Cross augers can only be adjusted for speed of rotation. In many conditions, the correct speed for many crops would be to have the flighting advancing the crop along the canvas 5% or slightly faster than the canvas speed. To increase auger speed, loosen lock wheel C counterclockwise, rotate adjust valve D clockwise, relock the valve by turning C clockwise. Closing this valve reduces the

bypass of oil around the hydraulic motor. To slow down the rpm of the auger, rotate adjust valve D counterclockwise.

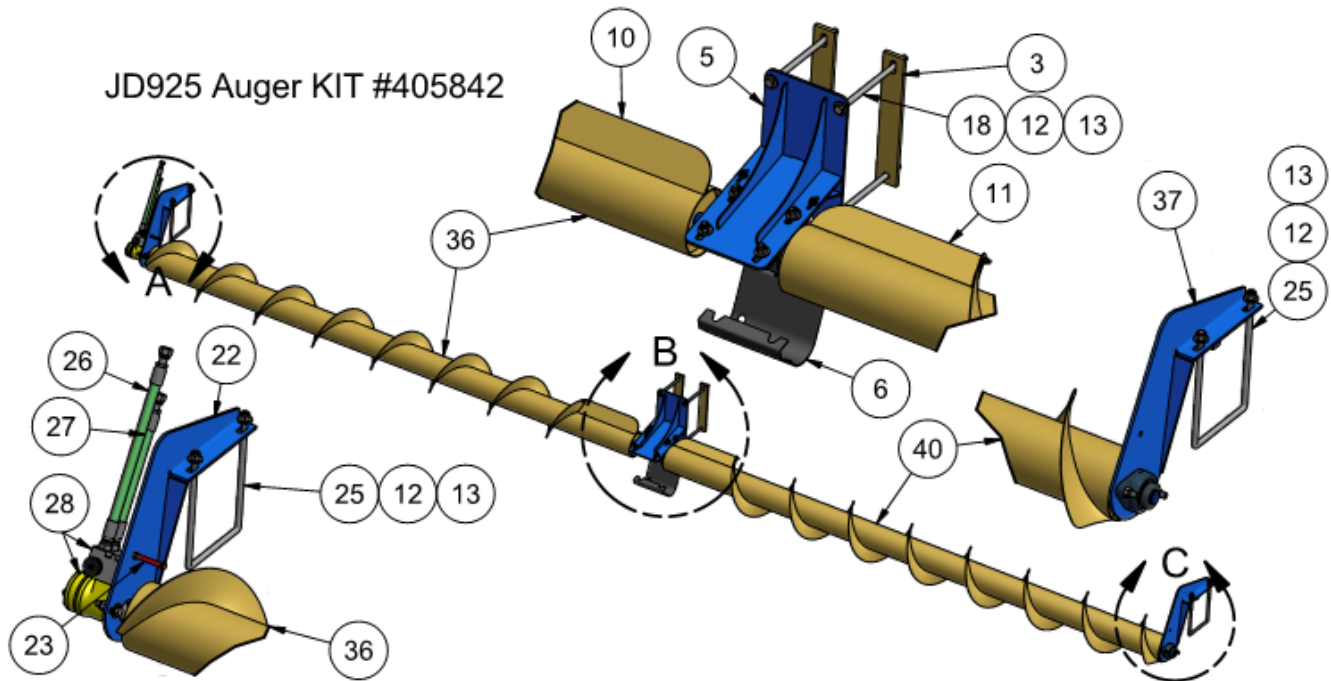
Observe the auger from the combine cab or swather operating platform. Focus your eye on one auger flighting and compare to a particular canvas slat. The auger can be adjusted to run at the same rate in feet per minute. As desired, slightly increase the cross auger to have it pulling ahead faster than the canvas.

In peas, augers can often be operated at a very slow speed--- 30% of canvas speed, and still feed as much crop into combine. When augers turn slower, there are fewer tendencies to wrap.

If wrapping occurs at the center of the header, try removing one or both of the bolt on paddles – In some conditions the paddles are an advantage, in some conditions the paddles are a disadvantage.

6 Parts

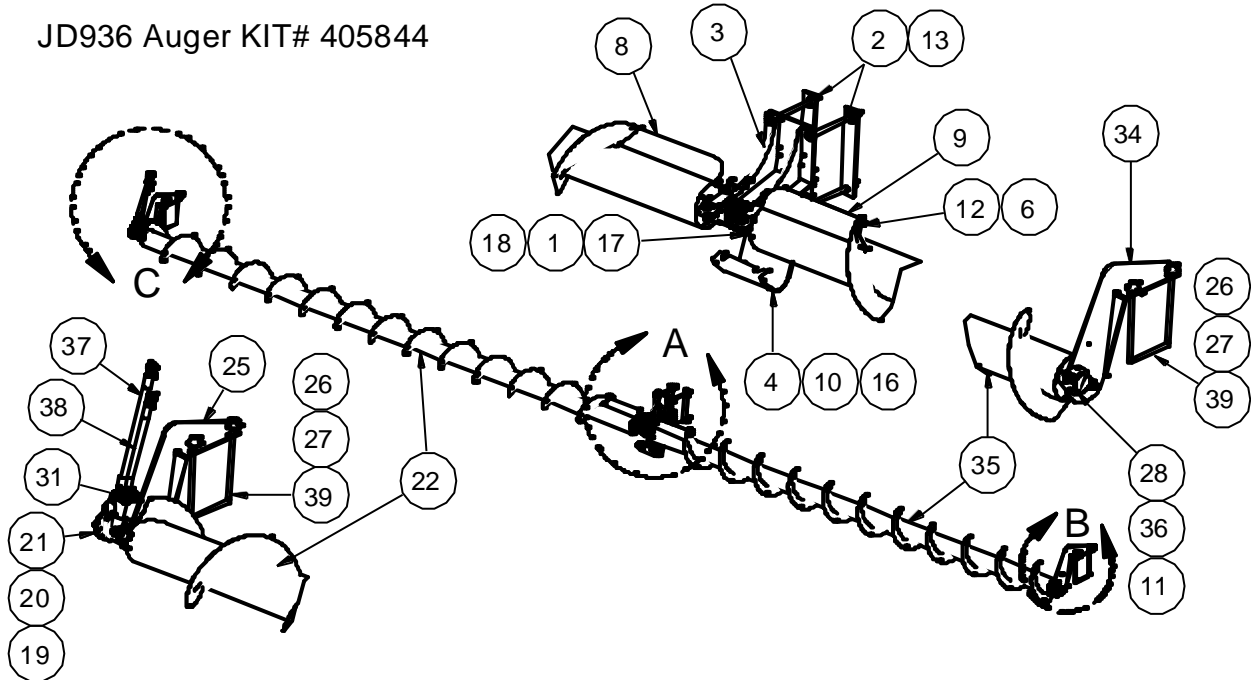
6.1 JD 925 CROSS AUGER PARTS OVERVIEW



ITEM	QTY	PART NUMBER	ITEM	QTY	PART NUMBER
1	2	114468 chain coupler 1-1/4" ID	24	1	102131 nut jam 3-8 nc gr5 1-2 HGT
2	2	114470 pillow block SA207 2 bolt	25	2	101041 U bolt sq 1_2NC x 7-1_8 w x 11 lg
3	2	405049 mt and backg plate lng 9	26	1	118823 hose assy 1_2 x 49 lg 8FFORF x 10MORB
4	2	405361 key 1/4" x 1/4" x 1"	27	1	118824 hose assy 1_2 x 24 lg 8FFORM x 10MORB
5	1	405788 brg mt wldt center J93X - 6in tube	28	1	117170 motor with flow control 5.9 danfoss
6	1	405087 plastic guard	29	1	407105 direct drive motor adapter wldt
7	2	100403 bolt 1-4 X 1 gr5 pltd nc	30	1	407271 shim hyd motor mt AGCO 9250
8	4	102121 nut nylok 1/4" nc gr5 pltd	31	4	100602 bolt 3-8 X 1 gr5 pltd nc
9	4	101103 flat washer 1/4"	32	4	101145 lock washer 3/8"
10	1	405725 flap bolt on wldt 3in RH	33	1	100404 HEX HD BOLTS 1 4 NC X 1 1 4
11	1	405726 flap bolt on wldt 3in LH	34	1	101144 washer lock 1/4
12	22	101106 flat washer 1/2"	35	1	102123 nut nylok 3/8" nc gr5 pltd
13	16	102125 nut nylok 1/2" nc gr5 pltd	36	1	408250 JD925 Auger Wldmt 6in RH dirdrv
14	2	100966 Carriage Bolt 1-4 X 3-4 NC	37	1	408116 mt wldt brg end
15	2	114471 Pillow Block Bearing Assy P207-SA207	38	2	100943 carriage bolt 1-2 X 2 NC
16	1	114469 Coupler Chain 2R No 50:1	39	1	114483 Bearing 1.25 in FL207 2 bolt flat flg
17	1	JD925 header frame	40	1	408253 JD925 Auger Wldmt LH dirdrv
18	4	100719 bolt 1-2 X 10 gr5 pltd nc			
19	2	100660 bolt 7-16 X 1 gr5 pltd nc			
20	2	101142 lock washer 7-16			
21	6	100703 bolt 1-2 X 2 gr5 pltd nc			
22	1	408106 mt wldt motor and brg end			
23	1	100641 bolt 3-8 X 3 gr8 pltd nf			

6.1 405844 JD936D CROSS AUGER

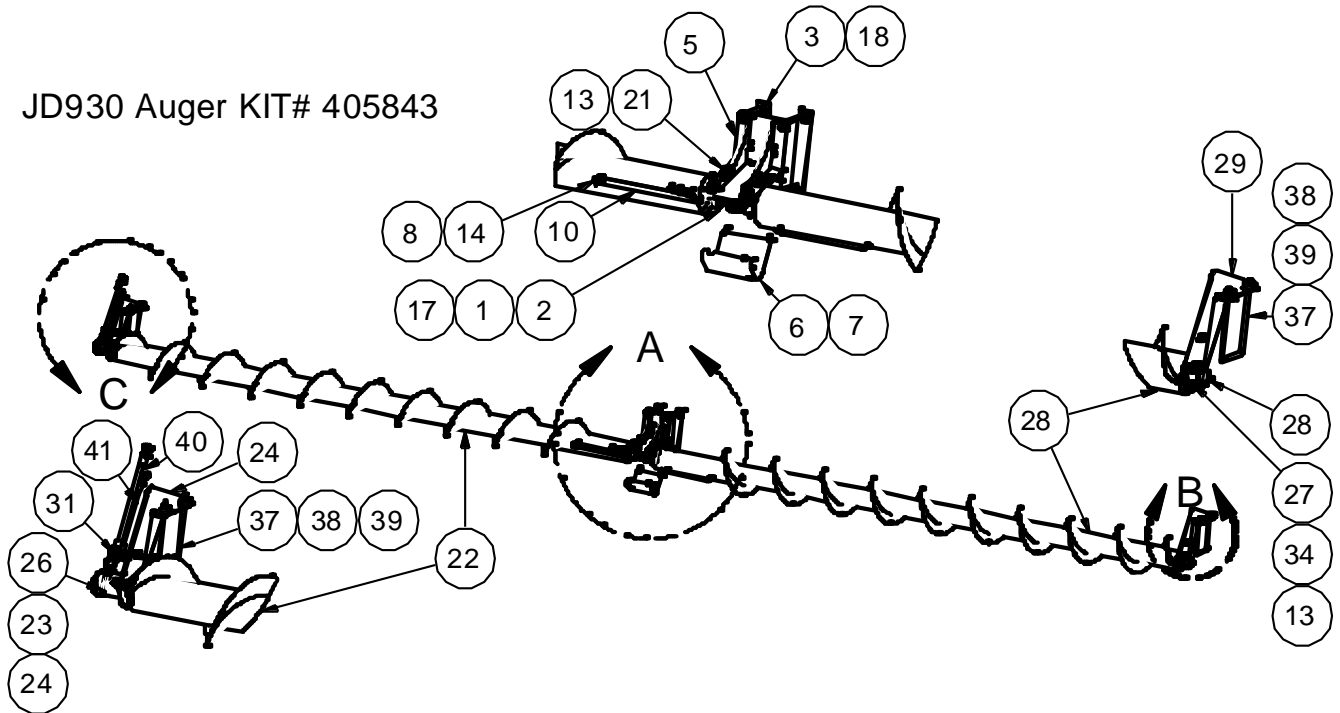
JD936 Auger KIT# 405844



ITEM	QTY	PART NUMBER	ITEM	QTY	PART NUMBER
1	2	114468 chain coupler 1-1/4" ID	21	1	117170 motor with flow control 5.9 danfoss
2	2	405040 mt and backg plate 9	22	1	408103 auger wldt RH JD936 12inOD
3	1	405788 brg mt wldt center J93X - 6in tube	23	4	100602 bolt 3/8 X 1 gr5 pltd nc
4	1	405087 plastic guard	24	4	101145 lock washer 3/8"
5	2	100403 bolt 1-4 X 1 gr5 pltd nc	25	1	408106 mt wldt motor and brg end
6	4	102121 nut nylok 1/4" nc gr5 pltd	26	4	102127 nut nylok 5/8" nc gr5 pltd
7	4	101103 flat washer 1/4"	27	4	101107 flat washer 5/8"
8	1	405725 flap bolt on wldt 3in RH	28	1	114483 Bearing 1.25 in FL207 2 bolt flat flange
9	1	405726 flap bolt on wldt 3in LH	29	1	102102 nut 3/8 nf pltd
10	16	101106 flat washer 1/2"	30	1	102123 nut nylok 3/8" nc gr5 pltd
11	12	102125 nut nylok 1/2" nc gr5 pltd	31	1	100610 bolt 3-8 X 3 gr5 pltd nc RED
12	2	100966 Carriage Bolt 1/4 X 3-4 NC	32	1	100404 bolt 1/4 X 1 1-4 nc
13	4	100719 bolt 1-2 X 10 gr5 pltd nc	33	1	101144 lock washer 1/4
14	2	100660 bolt 7/16 X 1 gr5 pltd nc	34	1	408116 mt wldt brg end
15	2	101142 lock washer 7/16	35	1	408131 auger wldt LH JD936 12inODdirdrv
16	6	100703 bolt 1/2 X 2 gr5 pltd nc	36	2	100943 carriage bolt 1/2 X 2 NC
17	2	114471 Pillow Block Bearing Assy P207-SA207	37	1	118823 hose assy 1/2 x 49 lg 8FFORF x 10MORB
18	1	114469 Coupler Chain 2R No. 50:1	38	1	118824 hose assy 1/2 x 24 lg 8FFORM x 10MORB
19	1	407271 shim hyd motor mt AGCO 9250	39	2	101041 U bolt sq 1_2NC x 7-1_8 w x 11 lg
20	1	407105 direct drive motor adapter wldt			

6.2 405843 JD930D CROSS AUGER

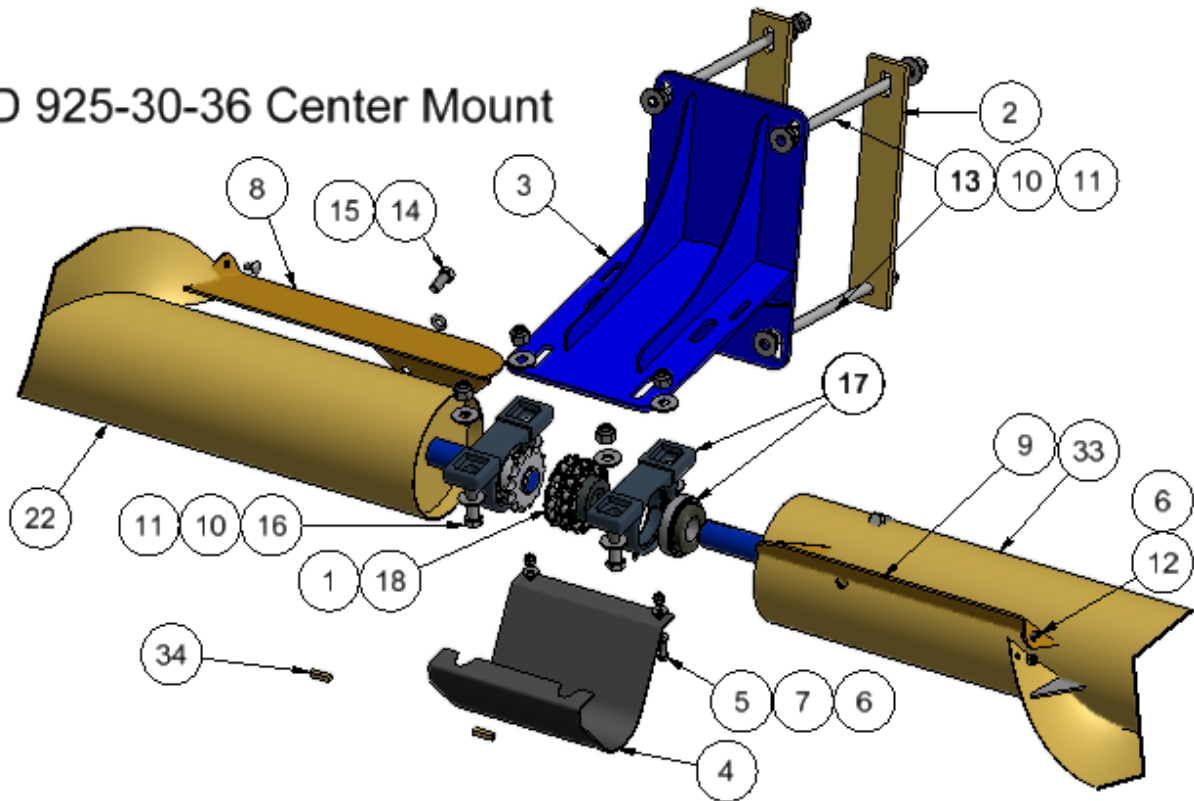
JD930 Auger KIT# 405843



ITEM	QTY	PART NUMBER	ITEM	QTY	PART NUMBER
1	2	114468 chain coupler 1-1/4" ID	23	1	407105 direct drive motor adapter wldt
2	2	114470 pillow block SA207 2 bolt	24	1	408106 mt wldt motor and brg end
3	2	405049 mt and backg plate lng 9	25	1	407271 shim hyd motor mt AGCO 9250
4	2	405361 key 1/4" x 1/4" x 1"	26	1	117170 motor with flow control 5.9 danfoss
5	1	405788 brg mt wldt center J93X - 6in tube	27	1	114483 Bearing 1.25 in FL207 2 bolt flat flange
6	1	405087 plastic guard	28	1	408134 JD930 Auger Wldmt 6in Direct Drive LH
7	2	100403 bolt 1-4 X 1 gr5 pltd nc	29	1	408116 mt wldt brg end
8	4	102121 nut nylok 1/4" nc gr5 pltd	30	2	101105 flat washer 3/8"
9	4	101103 flat washer 1/4"	31	3	100641 bolt 3/8 X 3 gr8 pltd NF RED
10	1	405725 flap bolt on wldt 3in RH	32	2	102131 nut jam 3/8 nc gr5 1/2 HGT
11	1	405726 flap bolt on wldt 3in LH	33	2	102123 nut nylok 3/8" nc gr5 pltd
12	14	101106 flat washer 1/2"	34	2	100943 carriage bolt 1/2 X 2 NC
13	12	102125 nut nylok 1/2" nc gr5 pltd	35	4	100602 bolt 3-8 X 1 gr5 pltd nc
14	2	100966 Carriage Bolt 1-4 X 3-4 NC	36	4	101145 lock washer 3/8"
15	1	405067 jd30d header frame	37	2	101041 U bolt 1/2NC x 7-1/8 w x 11 lg
16	3	114471 Pillow Block Bearing Assy P207-SA207	38	4	102127 nut nylok 5/8" nc gr5 pltd
17	1	114469 Coupler Chain 2R No. 50:1	39	4	101107 flat washer 5/8"
18	4	100719 bolt 1-2 X 10 gr5 pltd nc	40	1	118823 hose assy 1/2 x 49 lg 8FFORF x 10MORB
19	2	100660 bolt 7-16 X 1 gr5 pltd nc	41	1	118824 hose assy 1/2 x 24 lg 8FFORM x 10MORB
20	2	101142 lock washer 7-16			
21	6	100703 bolt 1-2 X 2 gr5 pltd nc			
22	1	408120 JD930 Auger Wldmt RH Direct Drive			

6.3 CENTER MOUNT DETAILS ALL MODELS

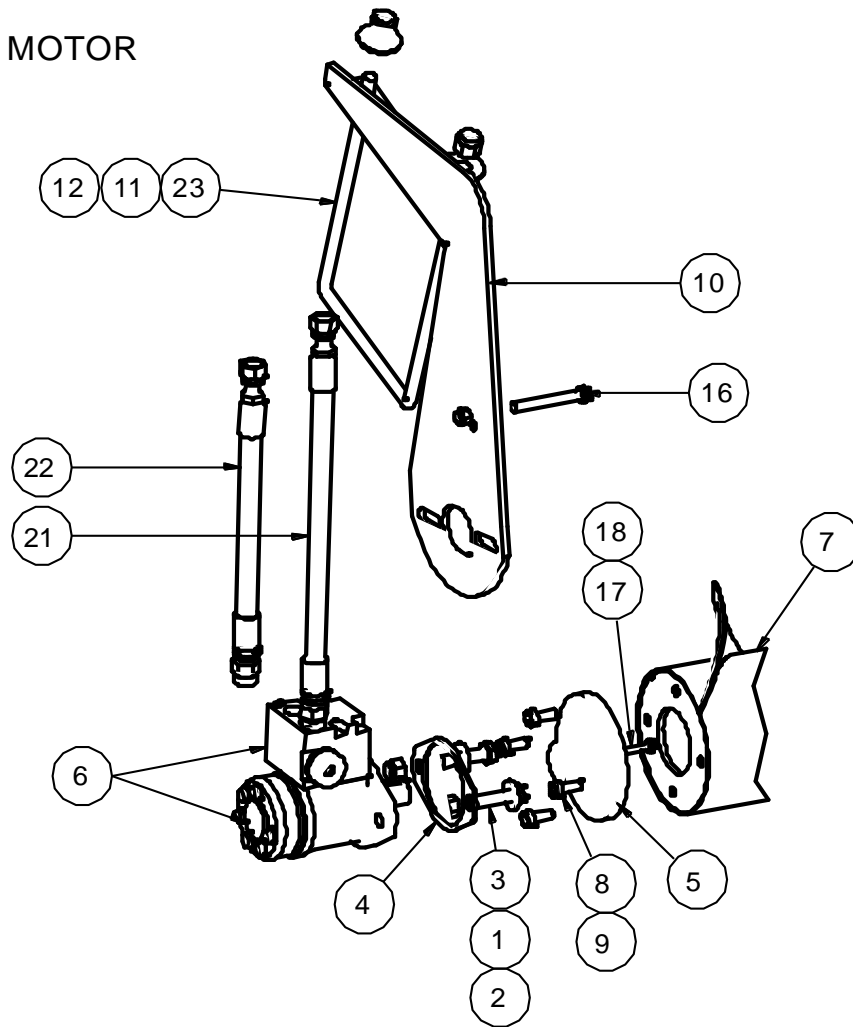
JD 925-30-36 Center Mount



1	2	114468 chain coupler 1-1/4" ID	18	1	114469
2	2	405040 mt and backg plate 9	19	1	407271 shim hyd motor mt AGCO 9250
3	1	405788 brg mt wldt center J93X - 6in tube	20	1	407105 direct drive motor adapter wldt
4	1	405087 plastic guard	21	1	117170 motor with flow control 5.9 danfoss
5	2	100403 bolt 1-4 X 1 gr5 pltd nc	22	1	408103 auger wldt RH JD936 12inOD
6	4	102121 nut nylok 1/4" nc gr5 pltd	23	4	100602 bolt 3-8 X 1 gr5 pltd nc
7	4	101103 flat washer 1/4"	24	4	101145 lock washer 3/8"
8	1	405725 flap bolt on wldt 3in RH	25	1	408106 mt wldt motor and brg end
9	1	405726 flap bolt on wldt 3in LH	26	4	102127 nut nylok 5/8" nc gr5 pltd
10	18	101106 flat washer 1/2"	27	4	101107 flat washer 5/8"
11	12	102125 nut nylok 1/2" nc gr5 pltd	28	1	102102 nut 3-8 nf pltd
12	2	100966 Carriage Bolt 1-4 X 3-4 NC	29	1	102123 nut nylok 3/8" nc gr5 pltd
13	4	100719 bolt 1-2 X 10 gr5 pltd nc	30	1	100610 bolt 3-8 X 3 gr5 pltd nc
14	2	100660 bolt 7-16 X 1 gr5 pltd nc	31	1	100404 bolt 1-4 X 1 1-4 nc
15	2	101142 lock washer 7-16	32	1	101144 lock washer 1/4
16	6	100703 bolt 1-2 X 2 gr5 pltd nc	33	1	408131 auger wldt LH JD936 12inODdirdrv
17	2	114471 Pillow Block Bearing Assy P207-SA207	34	2	405361 key 1/4" x 1/4" x 1"

6.4 RH MOTOR DETAIL FOR JD9XX SERIES AUGERS

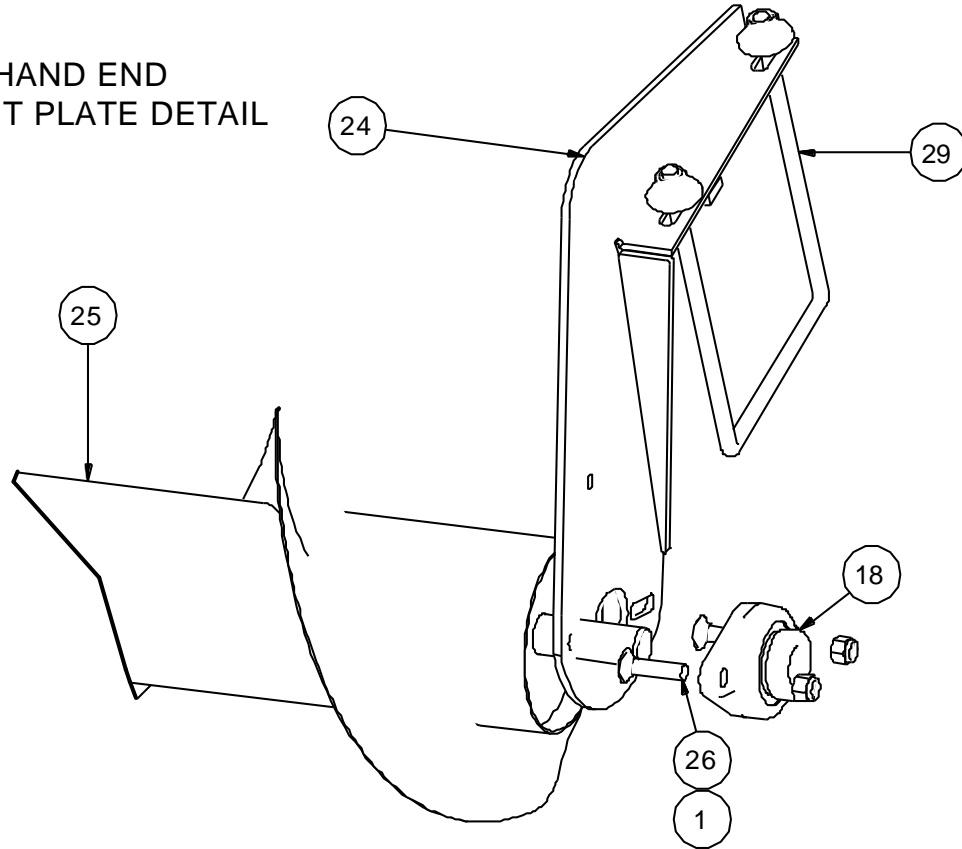
HYDRAULIC MOTOR DETAIL



ITEM	QTY	PART NUMBER	ITEM	QTY	PART NUMBER
1	18	101106 flat washer 1/2"	13	1	114483 Bearing 1.25 in FL207 2 bolt flat flg
2	12	102125 nut nylok 1/2" nc gr5 pltd	14	1	102102 nut 3-8 nf pltd
3	6	100703 bolt 1-2 X 2 gr5 pltd nc	15	1	102123 nut nylok 3/8" nc gr5 pltd
4	1	407271 shim hyd motor mt AGCO 9250	16	1	100610 bolt 3-8 X 3 gr5 pltd nc
5	1	407105 direct drive motor adapter wldt	17	1	100404 bolt 1-4 X 1 1-4 nc
6	1	117170 motor with flow control 5.9 danfoss	18	1	101144 lock washer 1/4
7	1	408103 auger wldt RH JD936 12inOD	19	1	408116 mt wldt brg end
8	4	100602 bolt 3-8 X 1 gr5 pltd nc	20	2	100943 carriage bolt 1-2 X 2 NC
9	4	101145 lock washer 3/8"	21	1	118823 hose assy 1_2 x 49 lg 8FFORF x 10MORB
10	1	408106 mt wldt motor and brg end	22	1	118824 hose assy 1_2 x 24 lg 8FFORF x 10MORB
11	4	102127 nut nylok 5/8" nc gr5 pltd	23	2	101041 U bolt sq 1_2NC x 7-1_8 w x 11 lg
12	4	101107 flat washer 5/8"			

6.5 LH END PLATE DETAIL FOR JD9XX SERIES AUGERS

LEFT HAND END
MOUNT PLATE DETAIL



ITEM	QTY	PART NUMBER	ITEM	QTY	PART NUMBER
1	12	102125 nut nylok 1/2" nc gr5 pltd	16	4	102127 nut nylok 5/8" nc gr5 pltd
2	2	100966 Carriage Bolt 1-4 X 3-4 NC	17	4	101107 flat washer 5/8"
3	4	100719 bolt 1/2 X 10 gr5 pltd nc	18	1	114483 Bearing 1.25 in FL207 2 bolt flat flg
4	2	100660 bolt 7-16 X 1 gr5 pltd nc	19	1	102102 nut 3-8 nf pltd
5	2	101142 lock washer 7-16	20	1	102123 nut nylok 3/8" nc gr5 pltd
6	6	100703 bolt 1-2 X 2 gr5 pltd nc	21	1	100610 bolt 3-8 X 3 gr5 pltd nc
7	2	114471 Pillow Block Bearing Assy P207-SA207	22	1	100404 bolt 1-4 X 1 1-4 nc
8	1	114469	23	1	101144 lock washer 1/4
9	1	407271 shim hyd motor mt AGCO 9250	24	1	408116 mt wldt brg end
10	1	407105 direct drive motor adapter wldt	25	1	408131 auger wldt LH JD936 12inODdirdrv
11	1	117170 motor with flow control 5.9 danfoss	26	2	100943 carriage bolt 1-2 X 2 NC
12	1	408103 auger wldt RH JD936 12inOD	27	1	118823 hose assy 1_2 x 49 lg 8FFORF x 10MORB
13	4	100602 bolt 3-8 X 1 gr5 pltd nc	28	1	118824 hose assy 1_2 x 24 lg 8FFORM x 10MORB
14	4	101145 lock washer 3/8"	29	2	101041 U bolt sq 1_2NC x 7-1_8 w x 11 lg
15	1	408106 mt wldt motor and brg end			

7 WARRANTY

1. Ag Shield Manufacturing warrants each new Ag Shield Cross Auger to be free from factory defects in material and workmanship under normal use and service, when set up and operated in accordance with factory instructions for one year from the date of delivery to the original purchaser.
2. Ag Shield's obligation under this warranty is limited to the supplying of replacement parts which are defective due to factory workmanship or material.
3. Your Ag Shield Dealer is responsible for providing warranty labour. Credit for required labour is specifically agreed to on an individual case basis.
4. The warranty is void on any unit which has been tampered with, or modified in any way not authorized in writing by the factory.
5. This warranty is void on any unit which is subject to misuse, negligence or accident, or which has had the serial number tampered or removed.
6. A "Warranty Claim Form" (sample at end of handbook) must be submitted to Ag Shield with returned parts in order for parts to be considered for warranty examination.
7. A warranty registration page from the front of this manual must be returned to the factory in order to qualify for warranty examination.
8. All returned parts must be sent to the factory freight prepaid, and warranty parts will be returned to you freight collect.
9. Replacement parts shipped pending receipt of parts for examination will be invoiced, and remain on your account until such time as examination indicates that a credit for those parts be issued or that payment is due.
10. Parts not returned for warranty examination within 30 days must be paid for at that time. Ag Shield will immediately reimburse any cash paid for items that are later determined defective.
11. Warranty terms and conditions are subject to provincial and state legislation.

WARRANTY CLAIM FORM

Ag Shield Mfg

Box 9, Benito,
 MB, R0L 0C0
 ph 800-561-0132
 fax 204-539-2130
 ph 204-539-2000i

Dealer		
Address		
City	State/Province	Zip/Postal

End User		
Address		
City	State/Province	

DATE OF SALE	DATE FAILED	REPAIR DATE	ACRES/HOURS	MODEL	SERIAL NUMBER
--------------	-------------	-------------	-------------	-------	---------------

LABOUR HOURS	LABOUR RATE	LABOUR AMOUNT	PARTS MUST BE RETURNED TO BENITO MB FREIGHT PREPAID TO BE CONSIDERED FOR WARRANTY. DATE SHIPPED		
--------------	-------------	---------------	---	--	--

QUANTITY ITEM	PART NUMBER	DESCRIPTION	PRICE EACH	TOTAL PRICE	DESCRIBE THE CAUSE OF FAILURE AND CORRECTIVE ACTION TAKEN	APPROVE /REJECT
1						
2						
3						
4						
5						
6						
7						
8						

I CERTIFY THAT THE INFORMATION IS ACCURATE AND THAT THE PARTS WERE REPLACED ON THE MACHINE	PARTS	DATE PARTS RECD	RECD BY
	LABOUR	ITEMS TO SUPPLIERS	
	TOTAL		

SHADED AREAS AG SHIELD USE ONLY ---PLEASE ADD DETAILS FOR ITEM NUMBERS ON BACK

